

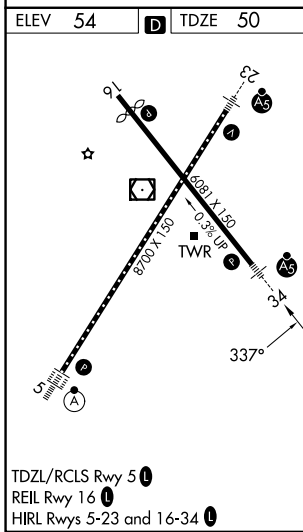
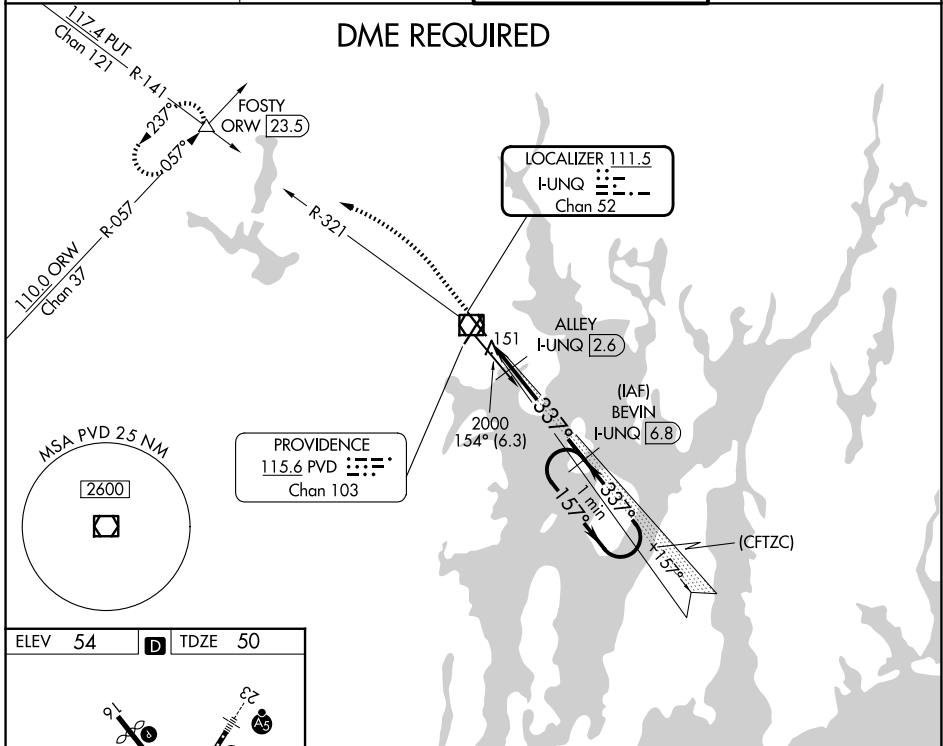
LOC/DME I-FUNQ <b>111.5</b> Chan <b>52</b>	APP CRS <b>337°</b>	Rwy Ldg <b>6081</b> TDZE <b>50</b> Apt Elev <b>54</b>
--	------------------------	---

# ILS or LOC RWY 34

RHODE ISLAND TF GREEN INTL (PVD)

<p><b>⚠</b> DME required. Rwy 34 helicopter visibility reduction below RVR 4000 NA. For inop MALSRS, increase S-LOC Cat A/B visibility to RVR 5500, and Cat C/D visibility to RVR 5000. Autopilot coupled approach NA below 300.</p>		<p>MALSRS A5</p> <p>MISSED APPROACH: Climb to 700 then climbing left turn to 2500 on heading 300° and on PVD VOR/DME R-321 to FOSTY INT/ORW 23.5 DME and hold.</p>	
D-ATIS <b>124.2</b>	PROVIDENCE APP CON ★ <b>123.675 244.875</b>	PROVIDENCE TOWER ★ <b>120.7</b> (CTAF) <b>0 257.8</b>	GND CON <b>121.9 348.6</b>

## DME REQUIRED



700	2500	PVD R-321	FOSTY	VGSI and ILS glidepath not coincident (VGSI Angle 3.00/TCH 60).
↑	hdg 300°			One Minute Holding Pattern
*LOC only.				
CATEGORY	A	B	C	D
S-ILS 34		331/40	281 (300-3/4)	
S-LOC 34		380/40	330 (400-3/4)	
CIRCLING	560-1 506 (600-1)	640-1 586 (600-1)	640-1 1/2 586 (600-1 1/2)	860-2 1/2 806 (900-2 1/2)

NE-1, 11 JUN 2026 to 09 JUL 2026

NE-1, 11 JUN 2026 to 09 JUL 2026