

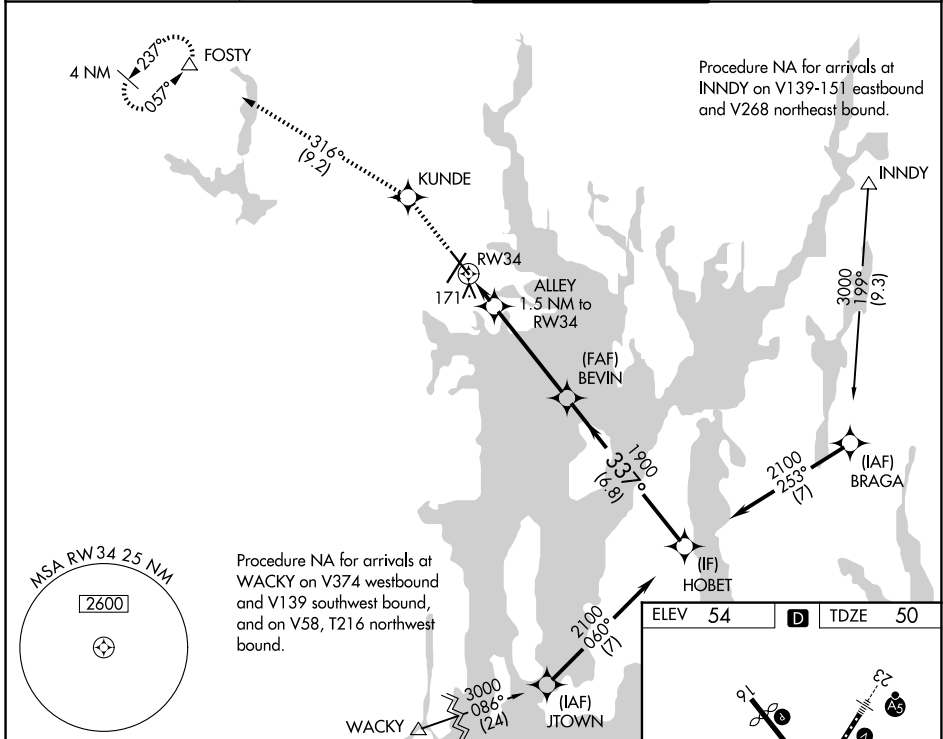
WAAS CH <b>58023</b> <b>W34A</b>	APP CRS <b>337°</b>	Rwy Ldg TDZE Apt Elev	<b>6081</b> <b>50</b> <b>54</b>
--	------------------------	-----------------------------	---------------------------------------

# RNAV (GPS) RWY 34

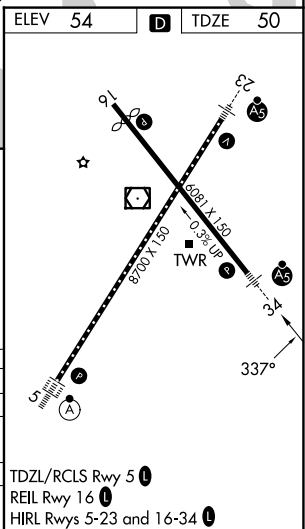
RHODE ISLAND TF GREEN INTL (PVD)

RNP APCH ▼ ▲ For uncompensated Baro-VNAV systems, LNAV/VNAV NA below -16°C or above 54°C. For inop MALSRS, increase LNAV/VNAV all Cats visibility to RVR 5000. For inop MALSRS, increase LNAV Cat A/B visibility to RVR 5500, and Cat C/D visibility to RVR 6000. Rwy 34 helicopter visibility reduction below RVR 4000 NA.	MALSRS AS	MISSED APPROACH: Climb to 2500 direct KUNDE and on track 316° to FOSTY and hold.
---	--------------	---

D-ATIS <b>124.2</b>	PROVIDENCE APP CON * <b>123.675 244.875</b>	PROVIDENCE TOWER * <b>120.7 (CTAF) 0 257.8</b>	GND CON <b>121.9 348.6</b>
------------------------	--	---	-------------------------------



2500 ↑	KUNDE ✧	FOSTY △	VGS1 and RNAV glidepath not coincident (VGS1 Angle 3.00/TCH 60.)			
*LNAV only.		ALLEY 1.5 NM to RW34	BEVIN 1900	HOBET 2100	GP 3.00° TCH 53	
RW34		337°		337°		
1.5 NM		4.2 NM		6.8 NM		
CATEGORY	A	B	C	D		
LPV DA	330/40		280 (300-¾)			
LNAV/VNAV DA	349/40		299 (300-¾)			
LNAV MDA	440/40		390 (400-¾)			
CIRCLING	560-1	640-1	640-1½	860-2½		
	506 (600-1)	586 (600-1)	586 (600-1½)	806 (900-2½)		



NE-1, 11 JUN 2026 to 09 JUL 2026

NE-1, 11 JUN 2026 to 09 JUL 2026

TDZL/RCLS Rwy 5  
REIL Rwy 16  
HIRL Rws 5-23 and 16-34