

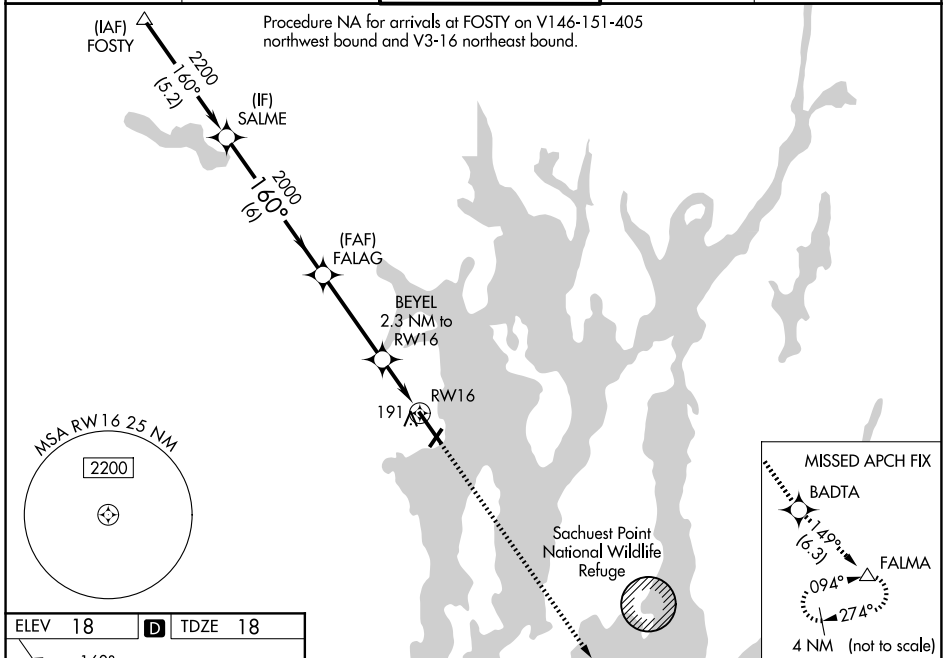
WAAS CH 93705 W16A	APP CRS 160°	Rwy Ldg 7000 TDZE 18 Apt Elev 18
--	------------------------	---

RNAV (GPS) RWY 16

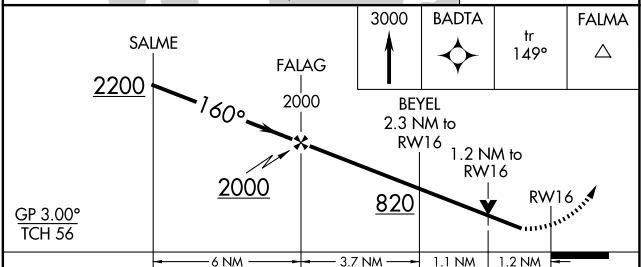
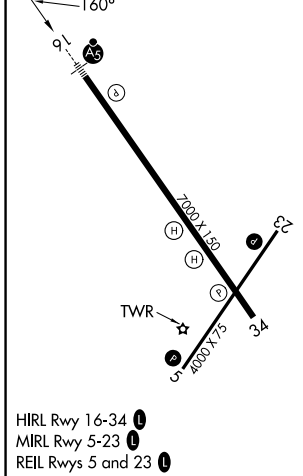
QUONSET STATE (OQU)

RNP APCH - GPS.	MALSR	MISSED APPROACH: Climb to 3000 direct BADTA and on track 149° to FALMA and hold.
<p>⚠ Circling Rwy 5 NA at night. For uncompensated Baro-VNAV systems, LNAV/VNAV NA below -15°C or above 54°C. Rwy 16 helicopter visibility reduction below ¾ SM NA. For inop ALS, increase LPV all Cats visibility to 7% and LNAV Cats A/B visibility to 1 SM.</p>		

ATIS 118.6	PROVIDENCE APP CON* 123.675 244.875	QUONSET TOWER* 126.35 (CTAF) 0 252.9	GND CON 134.5 226.675	UNICOM 122.95
----------------------	---	--	---------------------------------	-------------------------



ELEV 18	D	TDZE 18
---------	----------	---------



CATEGORY	A	B	C	D
LPV DA		286-¾ 268 (300-¾)		
LNAV/VNAV DA		439-¾ 421 (500-¾)		
LNAV MDA	460-¾ 442 (500-¾)		460-7/8 442 (500-7/8)	
CIRCLING	620-1 602 (700-1)		620-1¾ 602 (700-1¾)	880-2¾ 862 (900-2¾)

NE-1, 11 JUN 2026 to 09 JUL 2026

NE-1, 11 JUN 2026 to 09 JUL 2026