

QUANTICO, VIRGINIA

ILS or LOC/DME RWY 2

LOC/DME I-NYG 108.3 Chan 20	APCH CRS 023°	Rwy Idg TDZE Arpt Elev 4250 9 10
---	-------------------------	--

[USN]

QUANTICO MCAF (TURNER FLD) (KNYG)

TACAN required.
* Circling not authorized W of Rwy 2-20.

MISSED APPROACH: Climb to 600, then climbing right turn to 2000 on hdg 199° and intercept BRV VORTAC R-244 to MAAGS/BRV 1 DME and hold.

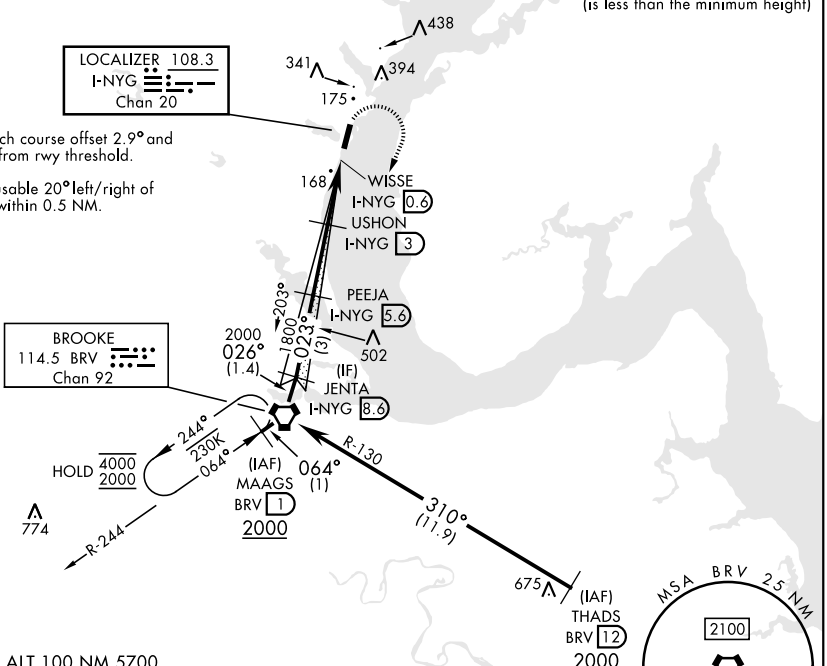
ATIS 263.15	POTOMAC APP/DEP CON 128.525 306.925	TOWER ★ 118.6 (CTAF) 0360.2	GND CON 121.75 348.7	ASR
-----------------------	---	---------------------------------------	--------------------------------	-----

Wheel crossing height
Group 3: 15' and Group 4: 10'
(is less than the minimum height)

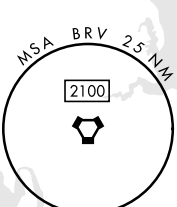
LOCALIZER 108.3
I-NYG
Chan 20

Final approach course offset 2.9° and passes 150' from rwy threshold.

Localizer unusable 20° left/right of course, and within 0.5 NM.

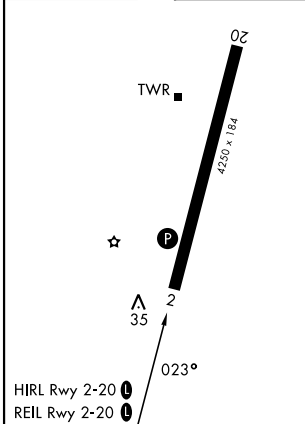


BROOKE
114.5 BRV
Chan 92



EMERG SAFE ALT 100 NM 5700

ELEV	10	TDZE	9
------	----	------	---



	JENTA I-NYG 8.9	PEEJA I-NYG 5.9	USHON I-NYG 3	WISSE I-NYG 0.6	
	2000	1800	960		
	GS 3.00°				
	TCH 35				
		← 2.6 NM	← 2.4 NM	← 0.5 NM	
CATEGORY	A	B	C	D	E
S-ILS 2		259-¾	250		(300-¾)
S-LOC 2		380-1	371		(400-1)
CIRCLING *	480-1 470 (500-1)	660-1 650 (700-1)	700-2 690 (700-2)	740-2¼ 730 (800-2¼)	760-2¾ 750 (800-2¾)

QUANTICO, VIRGINIA
Amdt 2 27NOV25

38°30'N-77°18'W

QUANTICO MCAF (TURNER FLD) (KNYG)

ILS or LOC/DME RWY 2

NE-3, 11 JUN 2026 to 09 JUL 2026

NE-3, 11 JUN 2026 to 09 JUL 2026