

QUANTICO, VIRGINIA

# TACAN RWY 2

BRV VORTAC <b>114.5</b> Chan <b>92</b>	APCH CRS <b>022°</b>	Rwy Idg TDZE Arprt Elev <b>4250</b> <b>9</b> <b>10</b>
--	-------------------------	---

[USN]

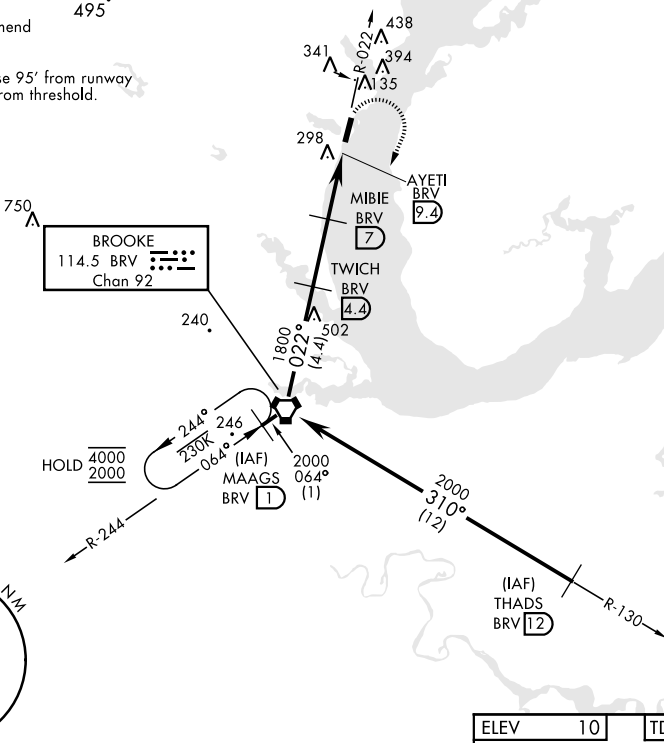
QUANTICO MCAF (TURNER FLD) (KNYG)

▼ \*Circling not authorized W of Rwy 2-20. MISSED APPROACH: Climbing right turn to 2000 on heading 199° and intercept BRV VORTAC R-244 to MAAGS/1 DME and hold.

ATIS <b>263.15</b>	POTOMAC APP/DEP CON <b>128.525 306.925</b>	TOWER ★ <b>118.6 (CTAF) 0360.2</b>	GND CON <b>121.75 348.7</b>	ASR
-----------------------	---	---------------------------------------	--------------------------------	-----

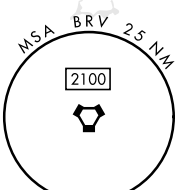
CAUTION: Short intermediate, recommend early configuration.

Final approach course 95° from runway centerline at 3000' from threshold.



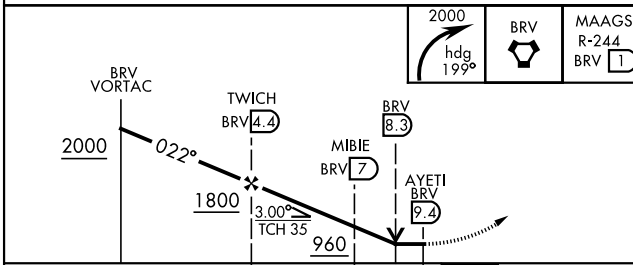
NE-3, 11 JUN 2026 to 09 JUL 2026

NE-3, 11 JUN 2026 to 09 JUL 2026

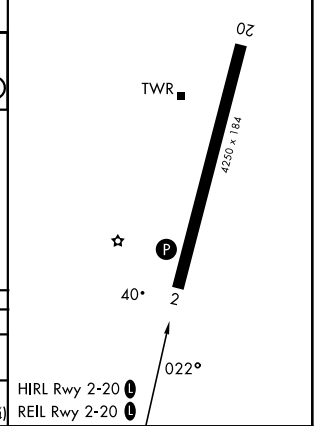


EMERG SAFE ALT 100 NM 5700

ELEV	10	TDZE	9
------	----	------	---



CATEGORY	A	B	C	D	E
S-2	560-1	551 (600-1)	560-1½	551 (600-1½)	
CIRCLING *	560-1 550 (600-1)	660-1 650 (700-1)	700-2 690 (700-2)	740-2¼ 730 (800-2¼)	760-2¾ 750 (800-2¾)



QUANTICO, VIRGINIA  
Amdt 5 27NOV25

38°30'N-77°18'W

QUANTICO MCAF (TURNER FLD) (KNYG)

# TACAN RWY 2