

HI-ILS or LOC Z RWY 13

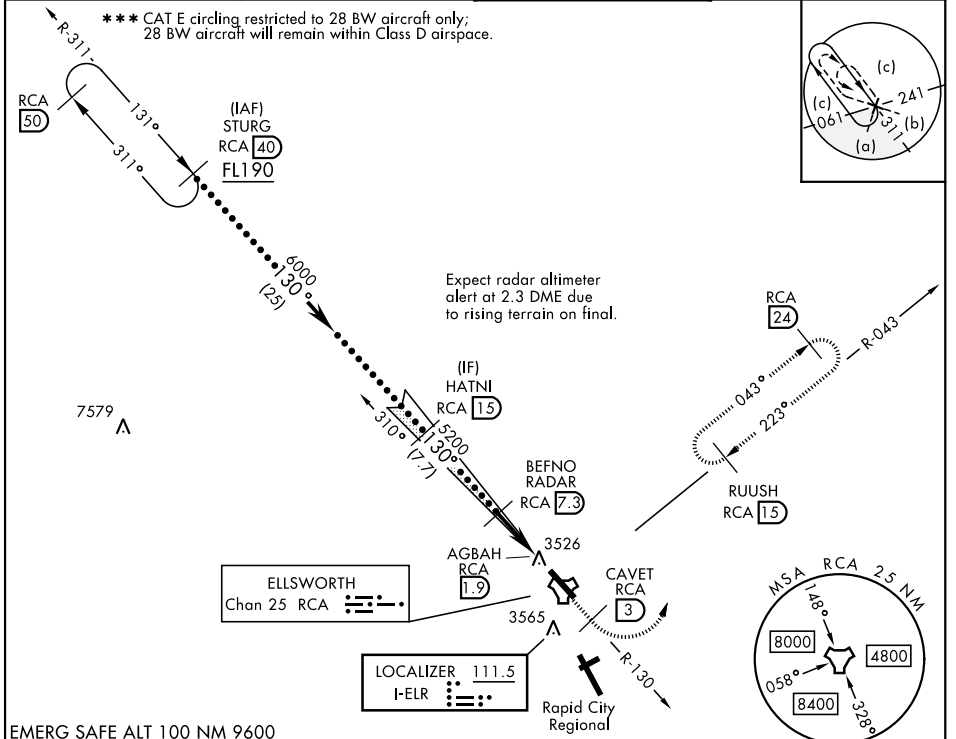
LOC I-ELR 111.5	APCH CRS 130°	Rwy ldg 13,497 TDZE 3276 Arpt Elev 3276	[USAF]	ELLSWORTH AFB (KRCA)
---------------------------	-------------------------	--	--------	----------------------

RADAR or DME required.

ALSIF-1 MISSED APPROACH: Track outbound RCA R-130 to 3 DME (CAVET), then turn left to join RCA R-043 to 15 DME (RUUSH) and hold. Maintain 6000.

▲ * When ALS inop, increase RVR to 40 and vis to 3/4 mile.
** When ALS inop, increase vis to 1 3/8 miles.

ATIS ★ 120.625 269.9	APP CON 119.5 259.1	TOWER ★ 126.05 253.5	GND CON 121.8 275.8
--------------------------------	-------------------------------	--------------------------------	-------------------------------



EMERG SAFE ALT 100 NM 9600

HATNI RCA 15 Intep Lczt 6000 130° 5200 5.4 NM 0.5			6000 RCA R-130	CAVET RCA 3 R-043	RUUSH RCA 15	ELEV 3276	TDZE 3276
VGSi and ILS glidepath not coincident (VGSi Angle 3.00/ TCH 62).							
GS 3.00° TCH 50						TWR	
CATEGORY	C	D	E	HIRL Rwy 13-31			
S-ILS 13 *	3476/24	200	(200-1/2)	FAF to MAP 5.4 NM			
S-LOC 13 **	3780/55	504	(600-1)	Knots: 120 140 160 180 200 Min:Sec: 2:42 2:19 2:02 1:48 1:37			
CIRCLING ***	3880-1 3/4 604 (700-1 3/4)	4040-2 1/2 764 (800-2 1/2)	4100-3 824 (900-3)				

HI-ILS or LOC Z RWY 13

NC-1, 11 JUN 2026 to 09 JUL 2026

NC-1, 11 JUN 2026 to 09 JUL 2026