

RAPID CITY, SOUTH DAKOTA

HI-TACAN Z RWY 31

TACAN RCA Chan 25	APCH CRS 302°	Rwy ldg 13,497 TDZE 3192 Arprt Elev 3276
-----------------------------	-------------------------	---

[USAF]

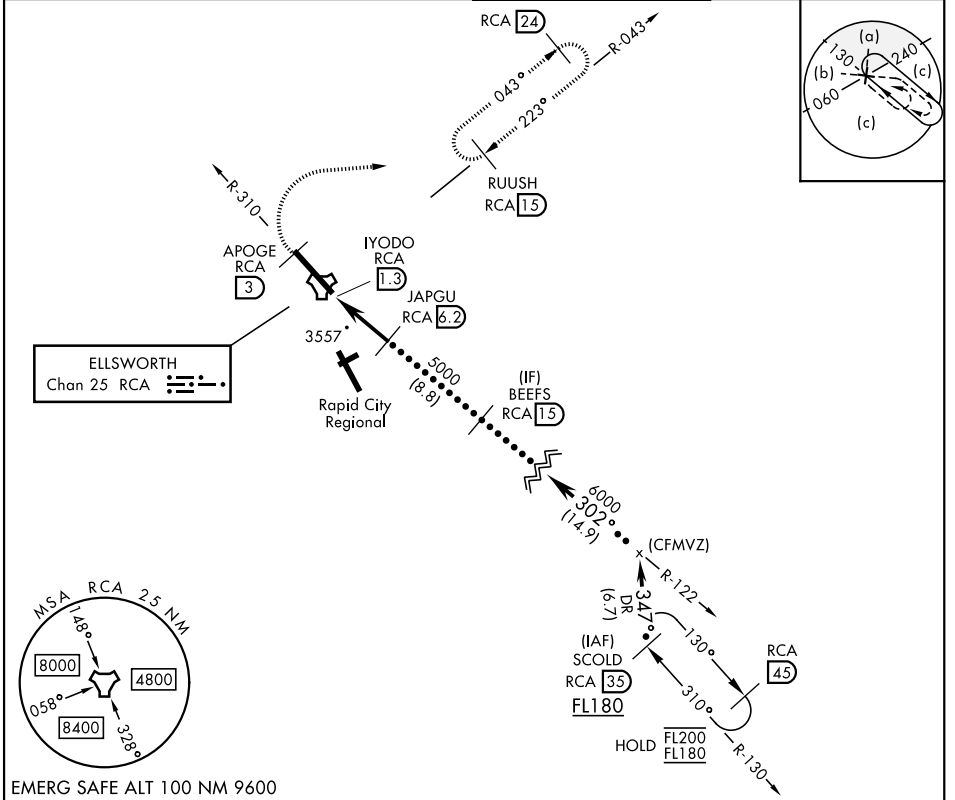
ELLSWORTH AFB (KRCA)

▲ * When ALS inop, increase CAT CDE vis to 1 3/4 miles.
 ** CAT E circling restricted to 28th BW aircraft only; 28th BW aircraft will remain within Class D airspace.



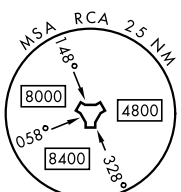
MISSED APPROACH: Track outbound RCA R-310 to 3 DME (APOGE), then turn right to join RCA R-043 to 15 DME (RUUSH) and hold. Maintain 6000.

ATIS ★ 120.625 269.9	APP CON 119.5 259.1	TOWER ★ 126.05 253.5	GND CON 121.8 275.8
--------------------------------	-------------------------------	--------------------------------	-------------------------------



NC-1, 11 JUN 2026 to 09 JUL 2026

NC-1, 11 JUN 2026 to 09 JUL 2026



EMERG SAFE ALT 100 NM 9600

6000 RCA R-310	APOGE RCA 3	RUUSH RCA 15	BEEFS RCA 15	ELEV 3276	TDZE 3192
CATEGORY	C			D	
S-31*	3820-1 3/4			628 (600-1 3/4)	
CIRCLING **	3880-1 3/4 604 (700-1 3/4)			4040-2 1/2 764 (800-2 1/2)	
	4100-3 824 (900-3)			HIRL Rwy 13-31	

RAPID CITY, SOUTH DAKOTA

44° 09'N-103° 06'W

ELLSWORTH AFB (KRCA)

Amtd 2 14MAY26

HI-TACAN Z RWY 31