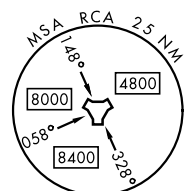
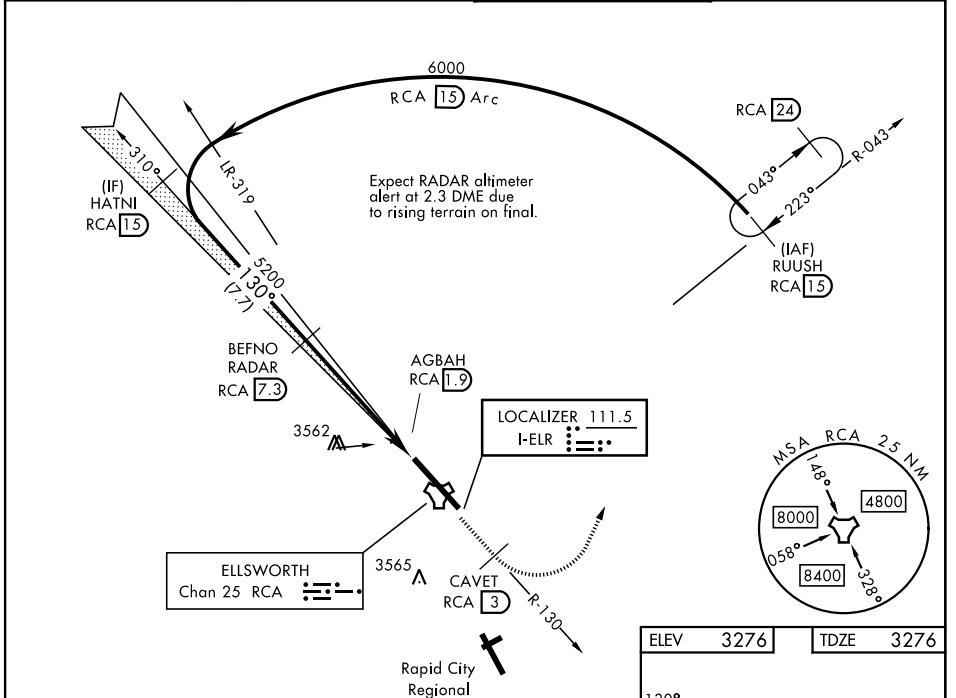


# ILS or LOC Y RWY 13

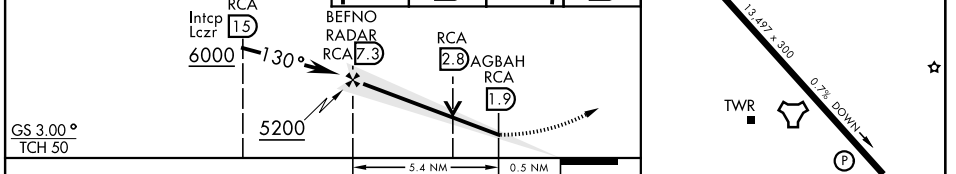
LOC I-ELR <b>111.5</b>	APCH CRS <b>130°</b>	Rwy ldg <b>13,497</b> TDZE <b>3276</b> Arpt Elev <b>3276</b>	[USAF]	ELLSWORTH AFB (KRCA)
---------------------------	-------------------------	--	--------	----------------------

RADAR or DME required.		ALSF-1 	MISSED APPROACH: Track outbound RCA R-130 to 3 DME (CAVET), then turn left to join RCA R-043 to 15 DME (RUUSH) and hold. Maintain 6000.
<p>▼ *When ALS inop, increase RVR to 40 and vis to 3/4 mile.</p> <p>** When ALS inop, increase CAT AB RVR to 55 and vis to 1 mile, CAT CDE vis to 1 1/8 miles.</p> <p>***CAT E circling restricted to 28th BW aircraft only; 28th BW aircraft will remain within Class D airspace.</p>			

ATIS ★ <b>120.625 269.9</b>	APP CON <b>119.5 259.1</b>	TOWER ★ <b>126.05 253.5</b>	GND CON <b>121.8 275.8</b>
--------------------------------	-------------------------------	--------------------------------	-------------------------------



EMERG SAFE ALT 100 NM 9600	ELEV 3276		TDZE 3276	
VGSI and ILS glidepath not coincident (VGSI Angle 3.00 TCH 62).	6000 RCA R-130	CAVET RCA 3	R-043 RCA	RUUSH RCA 15



GS 3.00° TCH 50	5.4 NM		0.5 NM		
CATEGORY	A	B	C	D	E
S-ILS 13 *	3476/24		200	(200-1/2)	
S-LOC 13 **	3780/24	504 (600-1/2)	3780/55	504	(600-1)
CIRCLING ***	3860-1 584 (600-1)	3880-1 604 (700-1)	3880-1 3/4 604 (700-1 3/4)	4040-2 1/2 764 (800-2 1/2)	4100-3 824 (900-3)

HIRL Rwy 13-31					
FAF to MAP 5.4 NM					
Knots	60	90	120	150	180
Min:Sec	5:24	3:36	2:42	2:10	1:48

# ILS or LOC Y RWY 13

NC-1, 11 JUN 2026 to 09 JUL 2026

NC-1, 11 JUN 2026 to 09 JUL 2026