

RAPID CITY, SOUTH DAKOTA

TACAN-A

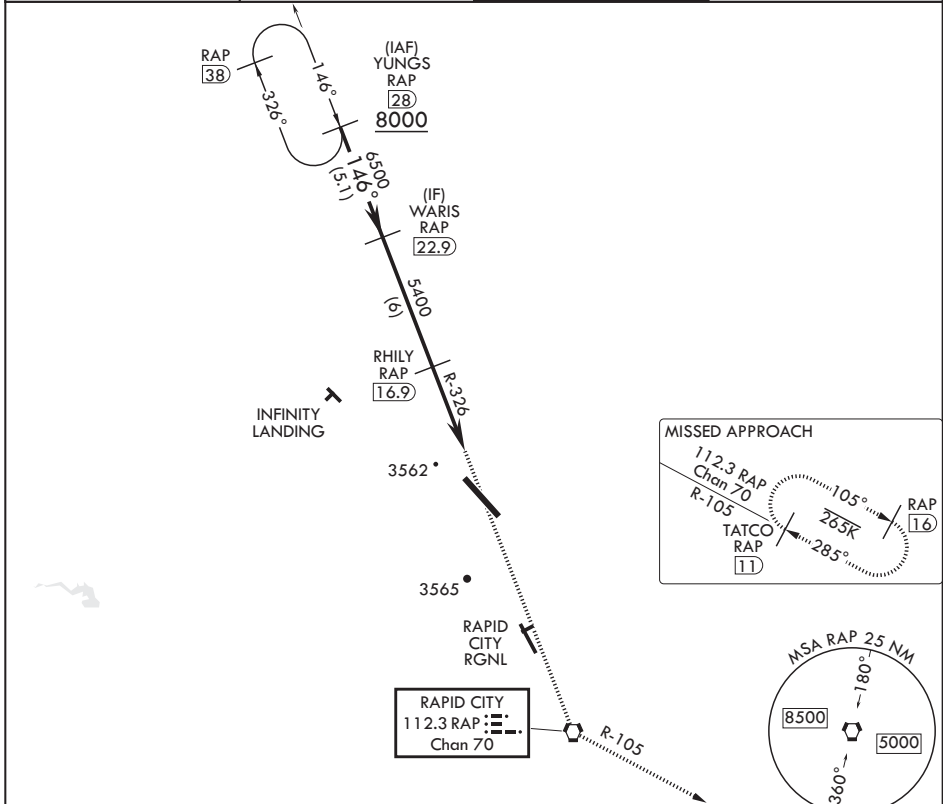
| | | |
|--------------------------------|------------------|---|
| VORTAC RAP 112.3 Chan 70 | APCH CRS 146° | Rwy Idg TDZE Arprt Elev N/A N/A 3276 |
|--------------------------------|------------------|---|

(USAF)

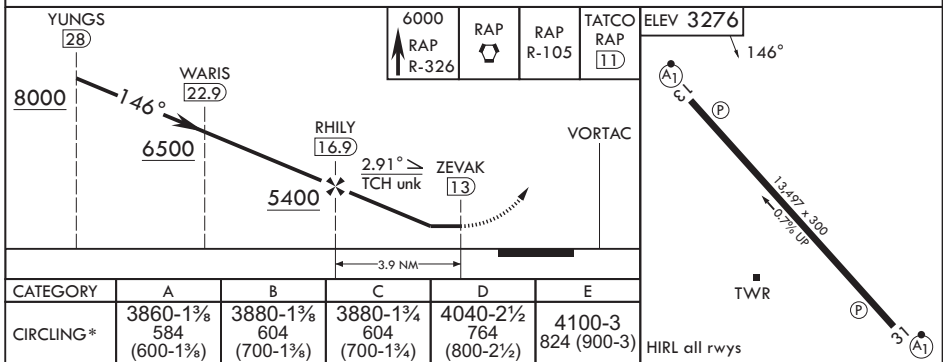
ELLSWORTH AFB (KRCA)

▼ * CAT E circling restricted to 28th BW aircraft only; 28th BW aircraft will remain within Class D airspace. MISSED APPROACH: Track inbound RAP R-326 to RAP VORTAC then turn left to join RAP R-105 outbound to 11 DME and hold. Maintain 6000.

| | | | |
|------------------------|------------------------|------------------------|------------------------|
| ATIS* 120.625 269.9 | APP CON 119.5 259.1 | TOWER* 126.05 253.5 | GND CON 121.8 275.8 |
|------------------------|------------------------|------------------------|------------------------|



EMERG SAFE ALT 100 NM 9600



RAPID CITY, SOUTH DAKOTA

44°09'N - 103°06'W

ELLSWORTH AFB (KRCA)

Amdt 3 14MAY26

TACAN-A

NC-1, 11 JUN 2026 to 09 JUL 2026

NC-1, 11 JUN 2026 to 09 JUL 2026