

TACAN Y RWY 31

TACAN RCA Chan 25	APCH CRS 302°	Rwy ldg 13,497 TDZE 3192 Arprt Elev 3276
-----------------------------	-------------------------	---

[USAF]

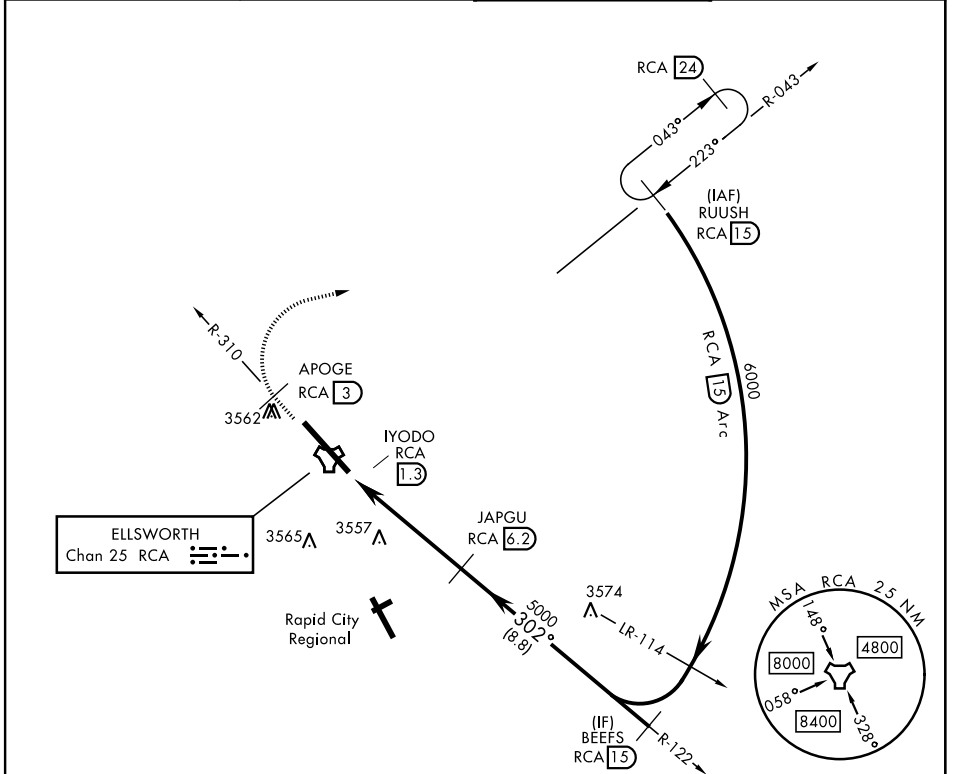
ELLSWORTH AFB (KRCA)

▼ * When ALS inop, increase CAT AB RVR to 55 and vis to 1 mile, increase CAT CDE vis to 1¾ miles.
** CAT E circling restricted to 28th BW aircraft only; 28th BW aircraft will remain within Class D airspace.



MISSED APPROACH: Track outbound RCA R-310 to 3 DME (APOGE), then turn right to join RCA R-043 to 15 DME (RUUSH) and hold. Maintain 6000.

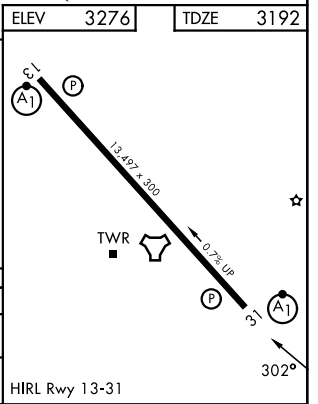
ATIS ★ 120.625 269.9	APP CON 119.5 259.1	TOWER ★ 126.05 253.5	GND CON 121.8 275.8
--------------------------------	-------------------------------	--------------------------------	-------------------------------



NC-1, 11 JUN 2026 to 09 JUL 2026

NC-1, 11 JUN 2026 to 09 JUL 2026

EMERG SAFE ALT 100 NM 9600					ELEV 3276	TDZE 3192
6000 RCA R-310	APOGE RCA 3	RCA R-043	RUUSH RCA 15	JAPGU RCA 6.2	BEEFS RCA 15	6000
RCA TACAN	IYODO RCA 1.3	RCA 2.6	302°	5000	3.08° TCH 60	4.9 NM
CATEGORY	A	B	C	D	E	
S-31*	3820/24	628 (600-½)	3820-1¾	628 (600-1¾)		
CIRCLING**	3860-1 584 (600-1)	3880-1 604 (700-1)	3880-1¾ 604 (700-1¾)	4040-2½ 764 (800-2½)	4100-3 824 (900-3)	HIRL Rwy 13-31



TACAN Y RWY 31