

# RNAV (RNP) W RWY 35R

RENO/TAHOE INTL (RNO)

APP CRS <b>347°</b>	Rwy Ldg TDZE Apt Elev	<b>9000</b> <b>4408</b> <b>4415</b>
------------------------	-----------------------------	---

RNP AR APCH - GPS.

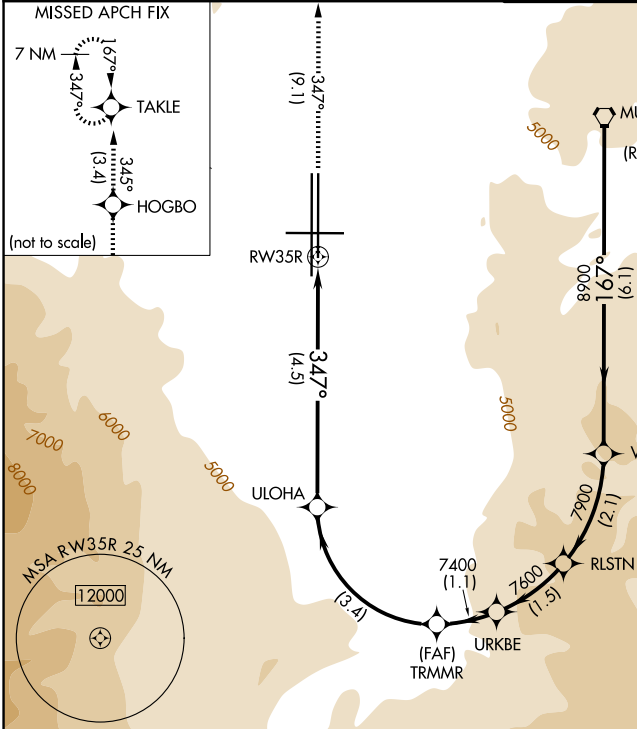
**⚠** For uncompensated Baro-VNAV systems, procedure NA below -9°C or above 34°C.

**⚠** -13°C

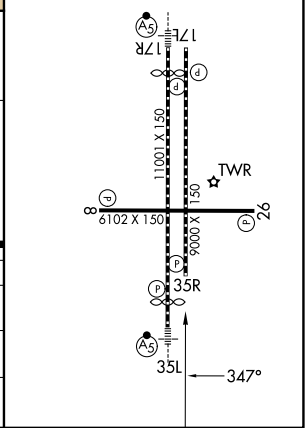
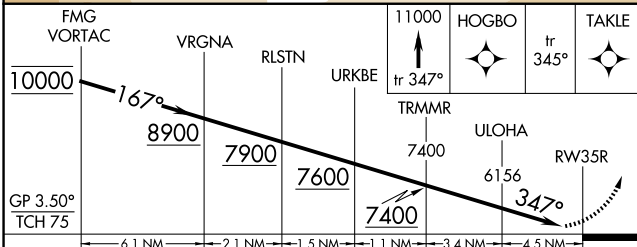
**MISSED APPROACH:** Climb to 11000 on track 347° to HOGBO and on track 345° to TAKLE and hold, continue climb-in-hold to 11000.

\*Missed approach requires minimum climb of 301 feet per NM to 7150.

D-ATIS <b>135.8 363.0</b>	NORCAL APP CON <b>119.2 279.55 126.3 353.9</b>	RENO TOWER <b>118.7 257.8</b>	GND CON <b>121.9 348.6</b>
------------------------------	---	----------------------------------	-------------------------------



ELEV 4415	<b>D</b> TDZE 4408
HIRL Rwys 17R-35L and 17L-35R	
REIL Rwys 8, 17L, 26, and 35R	
MIRL Rwy 8-26	



CATEGORY	A	B	C	D
RNP 0.11 DA*	4762-1 354 (400-1)			
RNP 0.30 DA	5349-2½ 941 (1000-2½)			
<b>AUTHORIZATION REQUIRED</b>				

SW-4, 11 JUN 2026 to 09 JUL 2026

SW-4, 11 JUN 2026 to 09 JUL 2026