

RNAV (RNP) Y RWY 17L

RENO/TAHOE INTL (RNO)

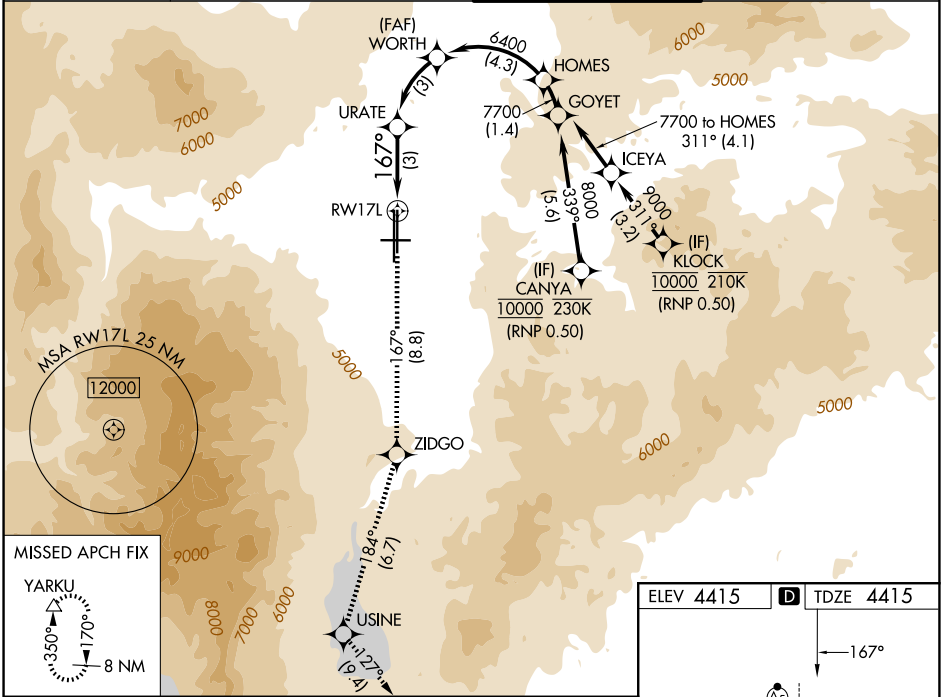
APP CRS 167°	Rwy Ldg TDZE Apt Elev	9000 4415 4415
------------------------	-----------------------------	---

RNP AR APCH - GPS, RF. Authorization required.
From HOMES: Min RNP 0.50.

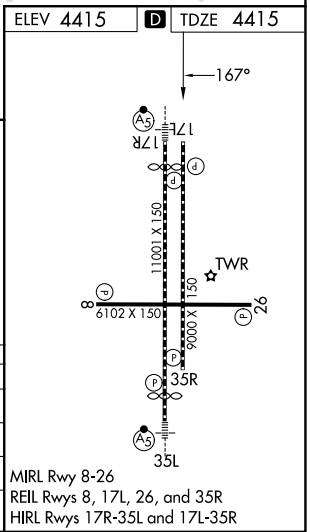
For uncompensated Baro-VNAV systems, procedure NA below -10°C or above 54°C.

MISSED APPROACH: Climb to 13000 on track 167° to ZIDGO and on track 184° to USINE and on track 127° to YARKU and hold, continue climb-in-hold to 13000.
* Missed approach requires minimum climb of 266 feet per NM to 7200.
Missed approach requires minimum climb of 212 feet per NM to 7160.

D-ATIS 135.8 363.0	NORCAL APP CON 119.2 279.55 126.3 353.9	RENO TOWER 118.7 257.8	GND CON 121.9 348.6
------------------------------	---	----------------------------------	-------------------------------



13000 ↑ tr 167°	ZIDGO ◆	USINE ◆ tr 184°	YARKU △ tr 127°	See planview for multiple IF locations.
URATE 6400		WORTH 6400		HOMES 7700
RWY 17L 167°		5445		GP 3.00° TCH 75
3 NM		3 NM		4.3 NM
CATEGORY	A	B	C	D
RNP 0.12 DA*	4754-1		339 (400-1)	
RNP 0.17 DA#	5019-1¾		604 (700-1¾)	
RNP 0.30 DA	5115-2		700 (700-2)	



AUTHORIZATION REQUIRED

MIRL Rwy 8-26
REIL Rwy 8, 17L, 26, and 35R
HIRL Rwy 17R-35L and 17L-35R

SW-4, 11 JUN 2026 to 09 JUL 2026

SW-4, 11 JUN 2026 to 09 JUL 2026