

RNAV (RNP) Z RWY 17L

RENO/TAHOE INTL (RNO)

APP CRS	Rwy Ldg	9000
167°	TDZE	4415
	Apt Elev	4415

RNP AR APCH - GPS. Authorization required. From TLLAK, OGIKO: RF. From AVVVY, ROWWS: min RNP 0.50. From WINRZ, DIDBE: min RNP 0.80.

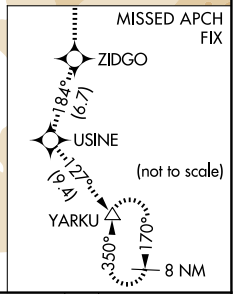
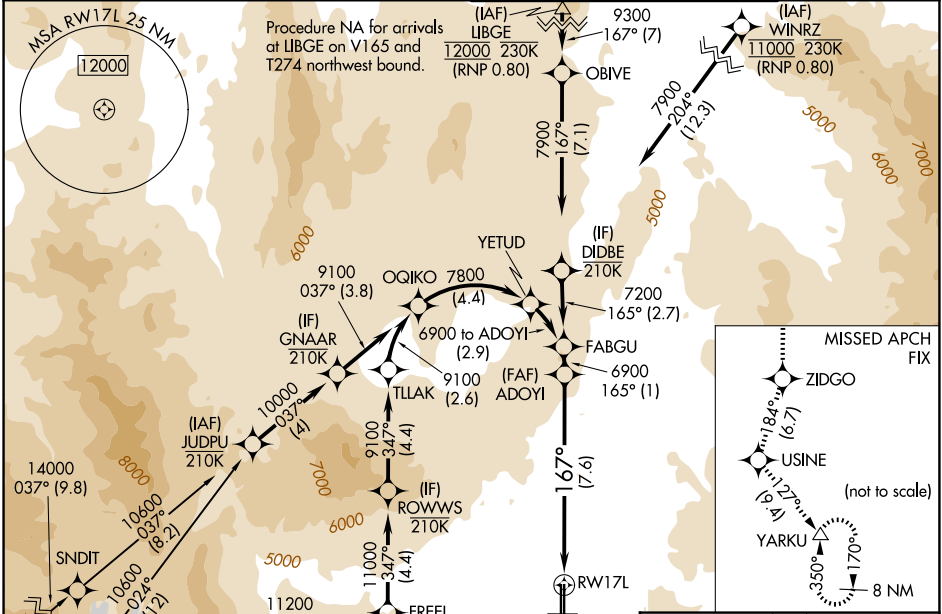
▼ For uncompensated Baro-VNAV systems, procedure NA below -10°C or above 54°C.

❄ -13°C

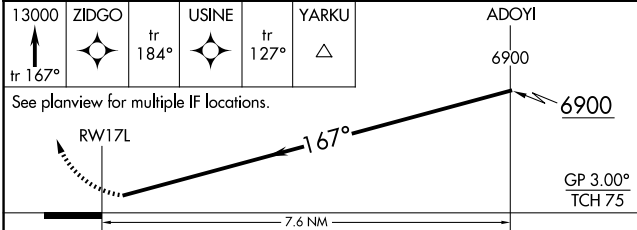
MISSED APPROACH: Climb to 13000 on track 167° to ZIDGO and on track 184° to USINE and on track 127° to YARKU and hold, continue climb-in-hold to 13000.

* Missed approach requires minimum climb of 266 feet per NM to 7200.
 # Missed approach requires minimum climb of 256 feet per NM to 7180.
 † Missed approach requires minimum climb of 212 feet per NM to 7140.

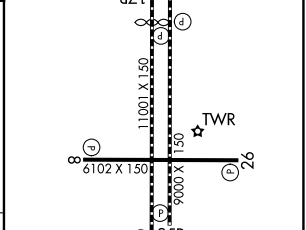
D-ATIS	NORCAL APP CON	RENO TOWER	GND CON
135.8 363.0	119.2 279.55 126.3 353.9	118.7 257.8	121.9 348.6



13000	ZIDGO	USINE	YARKU	ADOYI
tr 167°	tr 184°	tr 127°		6900



ELEV 4415	TDZE 4415
-----------	-----------



CATEGORY	A	B	C	D
RNP 0.10 DA *		4742-1	327 (400-1)	
RNP 0.12 DA #		4792-1	377 (400-1)	
RNP 0.15 DA †		5016-1¾	601 (700-1¾)	
RNP 0.30 DA		5115-2	700 (700-2)	

AUTHORIZATION REQUIRED

MIRL Rwy 8-26
 REIL Rwy 8, 17L, 26, and 35R
 HIRL Rwy 17R-35L and 17L-35R

SW-4, 11 JUN 2026 to 09 JUL 2026

SW-4, 11 JUN 2026 to 09 JUL 2026