

RNAV (RNP) Z RWY 35L

RENO/TAHOE INTL (RNO)

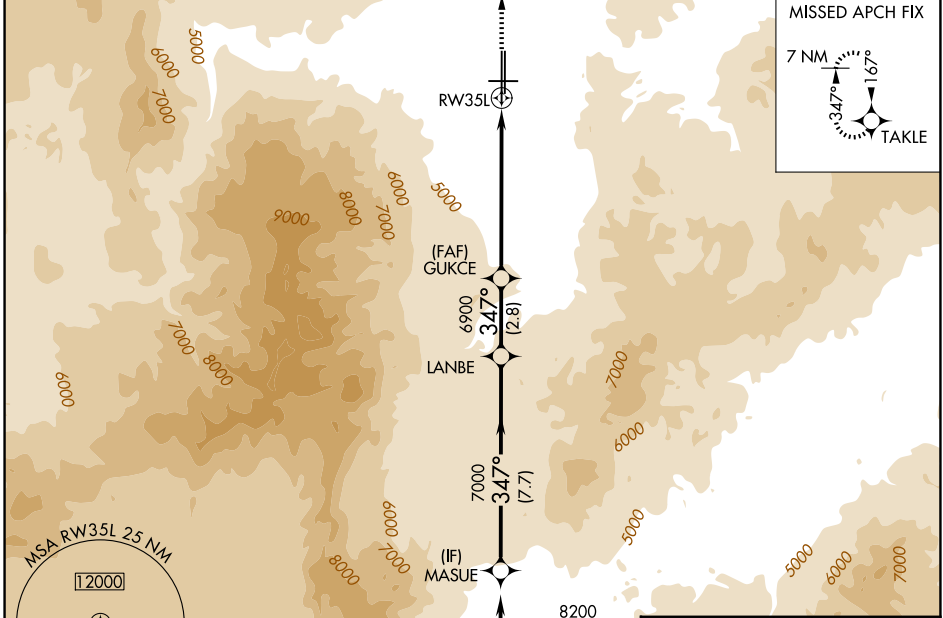
APP CRS	Rwy Ldg	10011
347°	TDZE	4410
	Apt Elev	4415

RNP AR APCH - GPS, min RNP 0.30.
Authorization required.

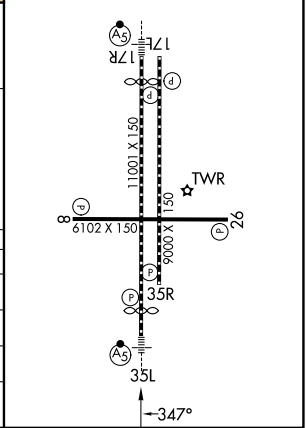
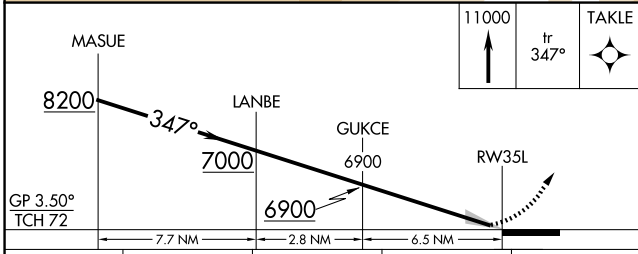
A For uncompensated Baro-VNAV systems, procedure NA below -10°C or above 35°C.
38 -13°C

MALSR MISSED APPROACH: Climb to 11000 on track 347° to TAKLE and hold, continue climb-in-hold to 11000. # Missed approach requires minimum climb of 216 feet per NM to 7200. *Missed approach requires minimum climb of 301 feet per NM to 7200.

D-ATIS 135.8 363.0	NORCL APP CON 119.2 279.55 126.3 353.9	RENO TOWER 118.7 257.8	GND CON 121.9 348.6
------------------------------	--	---	-------------------------------



ELEV 4415	D TDZE 4410
REIL Rws 8, 17L, 26, and 35R	
HIRL Rws 17R-35L and 17L-35R	
MIRL Rwy 8/26	



CATEGORY	A	B	C	D
RNP 0.10 DA *		4753-5/8	343 (400-5/8)	
RNP 0.20 DA #		5193-13/4	783 (800-13/4)	
RNP 0.30 DA		5353-2	943 (1000-2)	

AUTHORIZATION REQUIRED

SW-4, 11 JUN 2026 to 09 JUL 2026

SW-4, 11 JUN 2026 to 09 JUL 2026