

APP CRS <b>347°</b>	Rwy Ldg TDZE Apt Elev	<b>9000</b> <b>4408</b> <b>4415</b>
------------------------	-----------------------------	---

# RNAV (RNP) Z RWY 35R

RENO/TAHOE INTL (RNO)

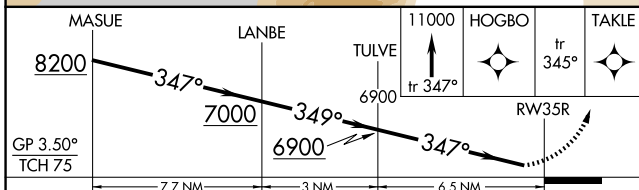
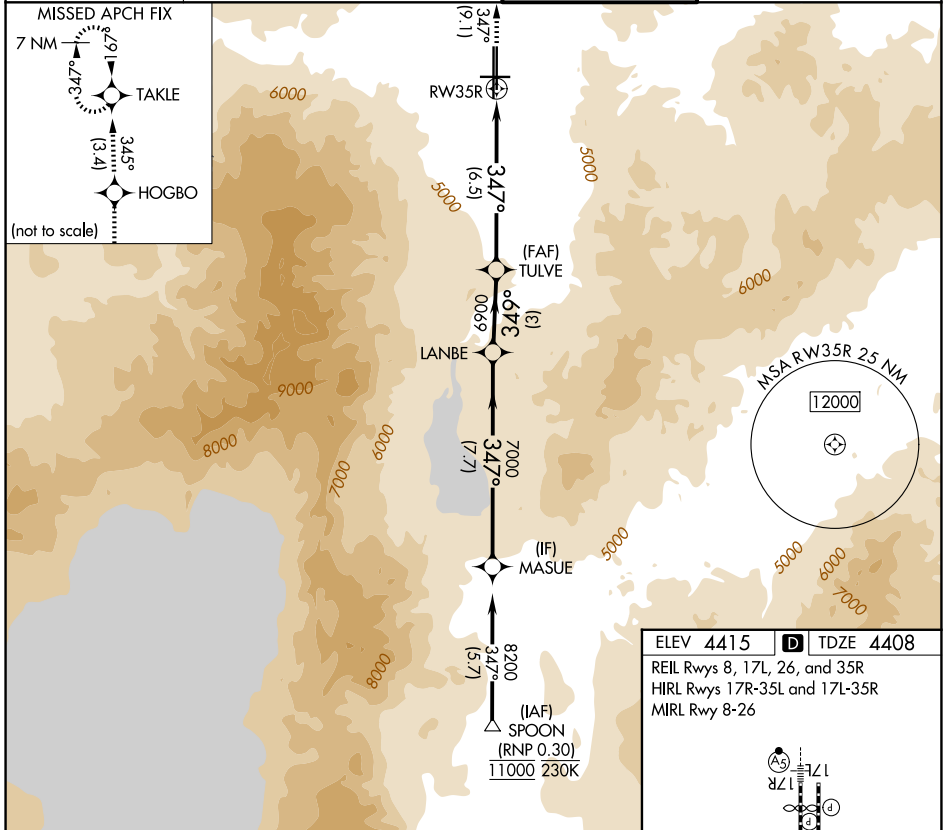
RNP AR APCH-GPS, min RNP 0.30. Authorization required.

MISSED APPROACH: Climb to 11000 on track 347° to HOGBO and on track 345° to TAKLE and hold, continue climb-in-hold to 11000.  
 \*Missed approach requires minimum climb of 306 feet per NM to 7200.

⚠  
 ⚠  
 ⚠  
 -13°C

For uncompensated Baro-VNAV systems, procedure NA below -10°C or above 34°C.

D-ATIS <b>135.8 363.0</b>	NORCAL APP CON <b>119.2 279.55 126.3 353.9</b>	RENO TOWER <b>118.7 257.8</b>	GND CON <b>121.9 348.6</b>
------------------------------	---	----------------------------------	-------------------------------



CATEGORY	A	B	C	D
RNP 0.11 DA*	4763-1		355 (400-1)	
RNP 0.30 DA	5353-2½		945 (1000-2½)	

**AUTHORIZATION REQUIRED**

ELEV 4415 **D** TDZE 4408  
 REIL Rwy 8, 17L, 26, and 35R  
 HIRL Rwy 17R-35L and 17L-35R  
 MIRL Rwy 8-26

