

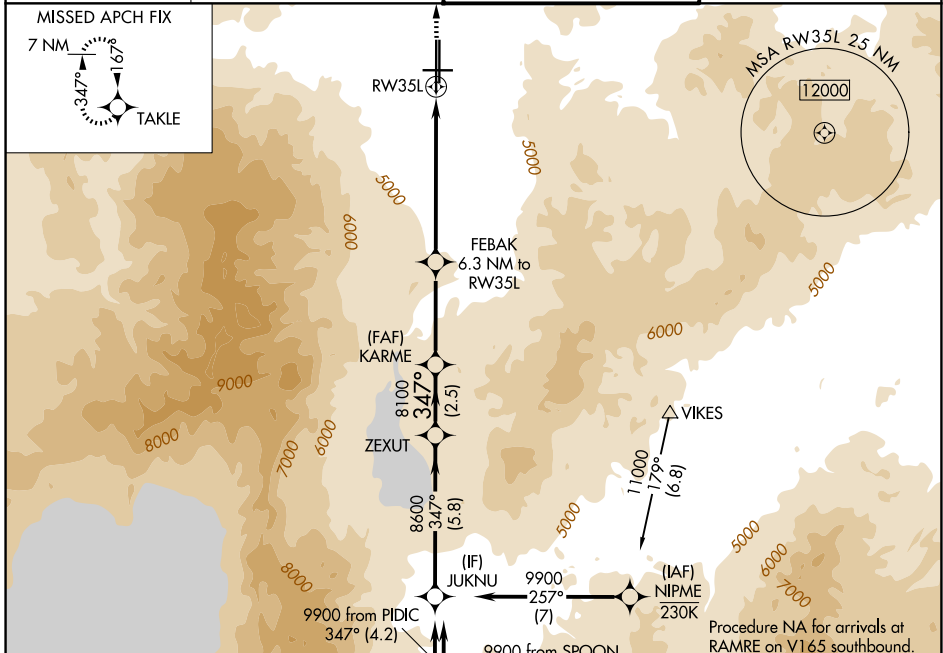
APP CRS 347°	Rwy Ldg TDZE Apt Elev	10011 4410 4415
------------------------	-----------------------------	--

RNAV (GPS) X RWY 35L

RENO/TAHOE INTL (RNO)

RNP APCH - GPS. MISSED APCH FIX -13°C	Circling to Rwy 8 NA at night. Baro-VNAV NA. Inop table does not apply to LNAV Cats C and D and LNAV/VNAV all Cats.	MALSR	MISSED APPROACH: Climb to 11000 direct TAKLE and hold, continue climb-in-hold to 11000.
---	---	-------	---

D-ATIS 135.8 363.0	NORCL APP CON 119.2 279.55 126.3 353.9	RENO TOWER 118.7 257.8	GND CON 121.9 348.6
------------------------------	--	----------------------------------	-------------------------------

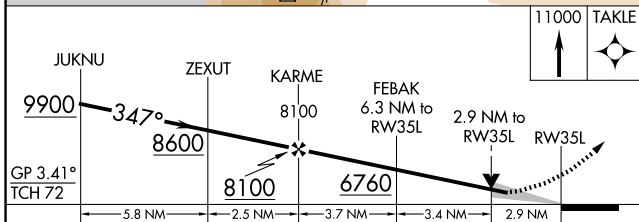


ELEV 4415	D TDZE 4410
-----------	--------------------

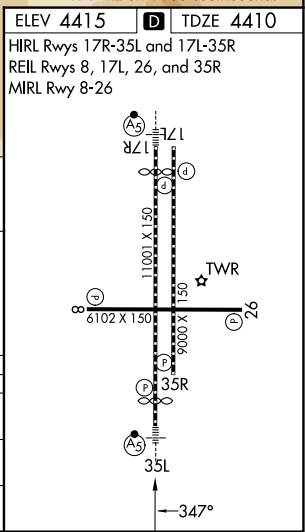
HIRL Rwys 17R-35L and 17L-35R
REIL Rwys 8, 17L, 26, and 35R
MIRL Rwy 8-26

Procedure NA for arrivals at RICHY on V28-113 southwest bound.

Procedure NA for arrivals at RAMRE on V165 southbound.



CATEGORY	A	B	C	D
LNAV/ VNAV DA	5473-4 1063 (1100-4)			
LNAV MDA	5580-3/4 1170 (1200-3/4)	5580-1 1170 (1200-1)	5580-3 1170 (1200-3)	
CIRCLING	5580-1 1/4 1165 (1200-1 1/4)	5580-1 1/2 1165 (1200-1 1/2)	6460-3 2045 (2100-3)	



SW-4, 11 JUN 2026 to 09 JUL 2026

SW-4, 11 JUN 2026 to 09 JUL 2026