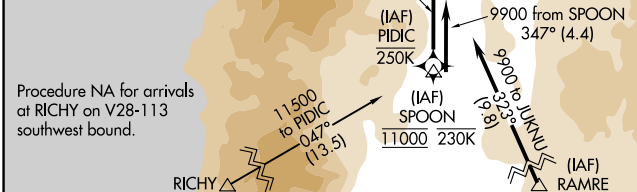
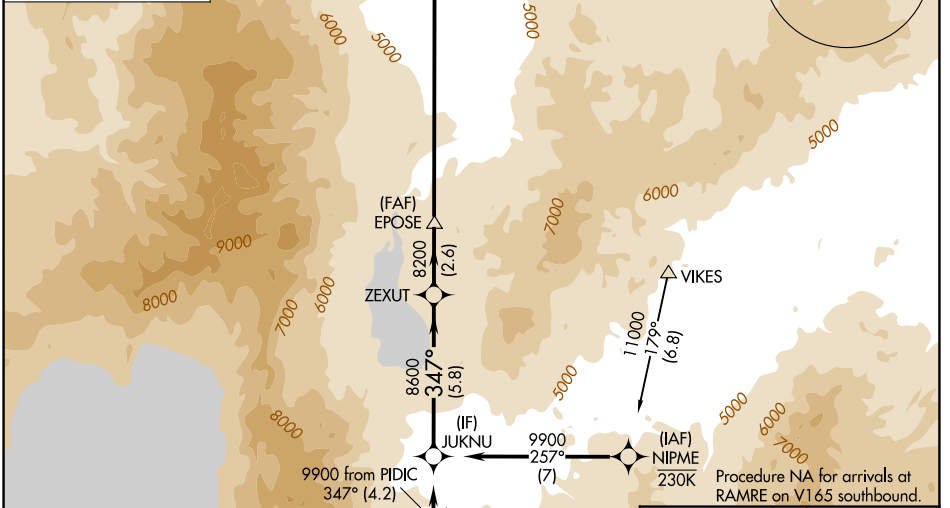
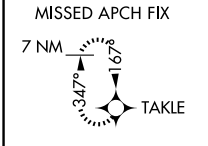


WAAS CH 82609 W35A	APP CRS 347°	Rwy Ldg 10011 TDZE 4410 Apt Elev 4415
--	------------------------	--

RNAV (GPS) Y RWY 35L

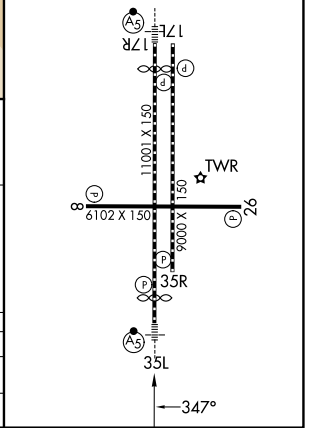
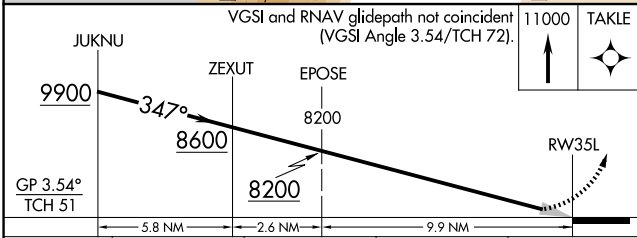
RENO/TAHOE INTL (RNO)

RNP APCH - GPS.		MALSR	MISSED APPROACH: Climb to 11000 direct TAKLE and hold, continue climb-in-hold to 11000. *Missed approach requires minimum climb of 260 feet per NM to 6860.
D-ATIS 135.8 363.0		NORCL APP CON 119.2 279.55 126.3 353.9	RENO TOWER 118.7 257.8
			GND CON 121.9 348.6



ELEV 4415 **D** TDZE 4410

HIRL Rwys 17R-35L and 17L-35R
REIL Rwys 8, 17L, 26, and 35R
MIRL Rwy 8-26



CATEGORY	A	B	C	D
LPV DA*	4740-1/2	330 (400-1/2)		NA
LPV DA	5384-2 1/2	974 (1000-2 1/2)		NA

SW-4, 11 JUN 2026 to 09 JUL 2026

SW-4, 11 JUN 2026 to 09 JUL 2026