

WAAS CH 40409 W35B	APP CRS 347°	Rwy Ldg TDZE 4408 Apt Elev 4415
--	------------------------	---

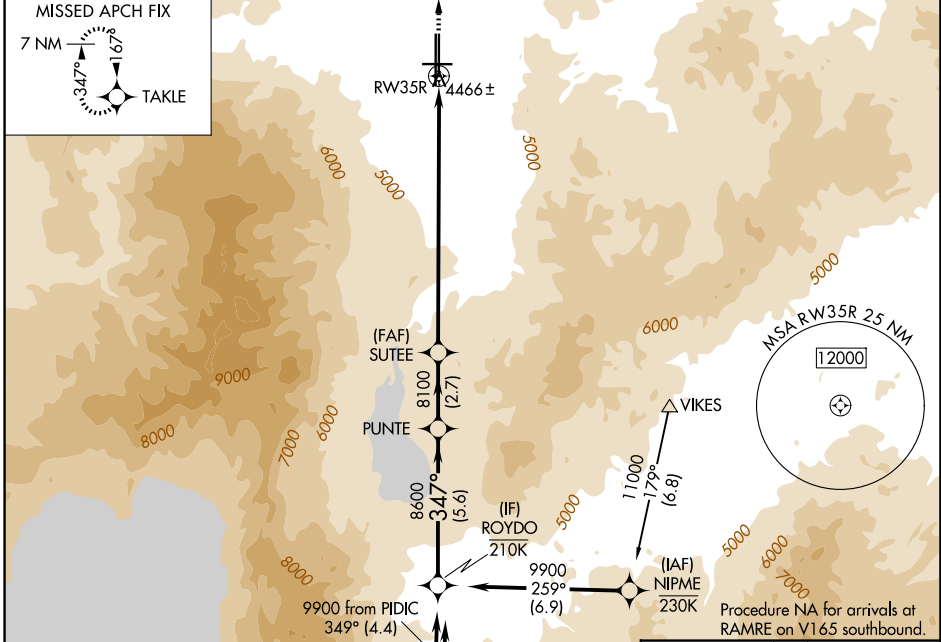
RNAV (GPS) Y RWY 35R

RENO/TAHOE INTL (RNO)

RNP APCH - GPS.	
NA -13°C	Rwy 35R helicopter visibility reduction below ¼ SM NA.

MISSED APPROACH: Climb to 11000 direct TAKLE and hold, continue climb-in-hold to 11000.
 * Missed approach requires minimum climb of 250 feet per NM to 6100.

D-ATIS 135.8 363.0	NORCAL APP CON 119.2 279.55 126.3 353.9	RENO TOWER 118.7 257.8	GND CON 121.9 348.6
------------------------------	---	----------------------------------	-------------------------------

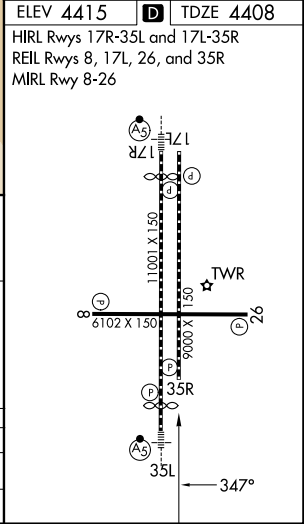
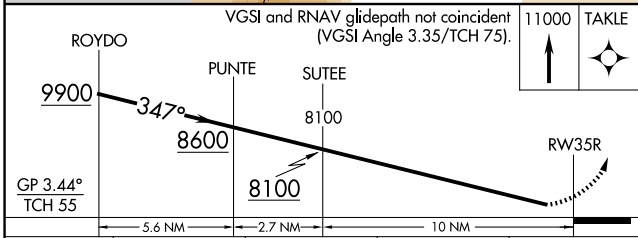


ELEV 4415 **D** TDZE 4408
 HIRL Rwys 17R-35L and 17L-35R
 REIL Rwys 8, 17L, 26, and 35R
 MIRL Rwy 8-26

Procedure NA for arrivals at RICHY on V28-113 southwest bound.

9900 from PIDIC 349° (4.4)
 (IAF) PIDIC 250K
 (IAF) SPOON 11000 230K
 9900 from SPOON 349° (4.6)
 (IAF) SPOON 11000 230K
 9900 to ROYDO 324° (9.9)
 (IAF) RAMRE

11500 to PIDIC 047° (113.5)



CATEGORY	A	B	C	D
LPV DA*	4811-1 1/8		403 (400-1 1/8)	
LPV DA	5379-3		971 (1000-3)	

SW-4, 11 JUN 2026 to 09 JUL 2026

SW-4, 11 JUN 2026 to 09 JUL 2026