

VORTAC FMG 117.9 Chan 126	APP CRS 239°	Rwy Ldg TDZE Apt Elev N/A N/A 4415
---	------------------------	--

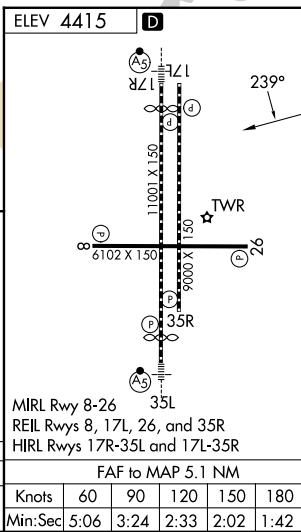
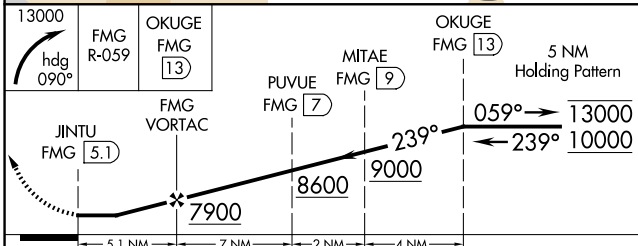
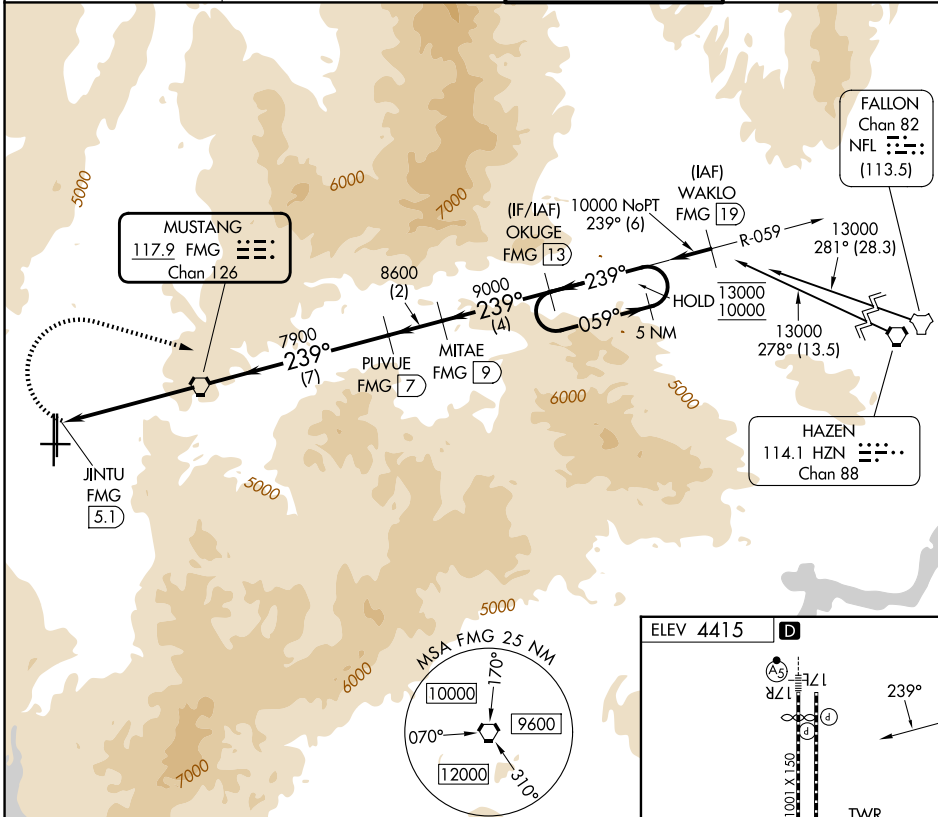
TACAN-F

RENO/TAHOE INTL (RNO)

⚠ Circling NA for Cat E south of Rwy 8 and west of 35L. Circling Rwy 8 NA at night. Approaches RADAR monitored by NORCAL APP CON. Arrivals from east and aircraft on missed approach may be vectored to final. Circling NA for Cat E to Rwys 8 and 26.

MISSED APPROACH: Climbing right turn to 13000 on heading 090° and FMG R-059 to OKUGE/13 DME and hold, continue climb-in-hold to 13000.

D-ATIS 135.8 363.0	NORCAL APP CON 119.2 279.55 126.3 353.9	RENO TOWER 118.7 257.8	GND CON 121.9 348.6
------------------------------	---	----------------------------------	-------------------------------



CATEGORY	A	B	C	D	E
CIRCLING	6220-1¼ 1805 (1900-1¼)	6220-1½ 1805 (1900-1½)	6460-3	2045	(2100-3)
	FAF to MAP 5.1 NM				
Knots	60	90	120	150	180
Min:Sec	5:06	3:24	2:33	2:02	1:42

SW-4, 11 JUN 2026 to 09 JUL 2026

SW-4, 11 JUN 2026 to 09 JUL 2026