

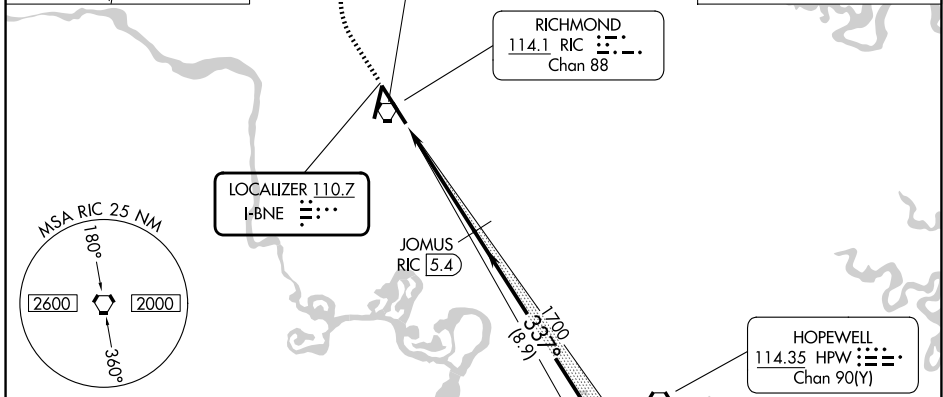
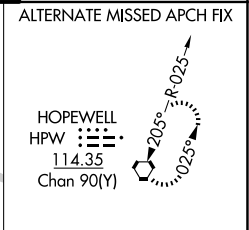
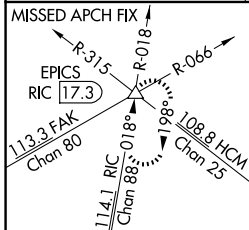
LOC I-BNE 110.7	APP CRS 337°	Rwy Ldg TDZE Apt Elev	9003 161 168
---------------------------	------------------------	-----------------------------	---

ILS RWY 34 (SA CAT I)

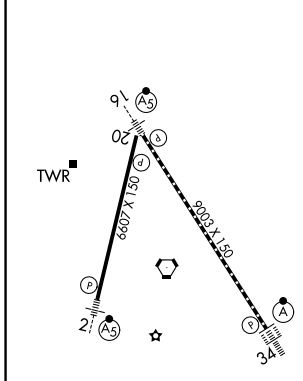
RICHMOND INTL (RIC)

<p>⚠ Requires specific OPSPEC, MSPEC, or LOA approval. DME from RIC VORTAC. DME use requires simultaneous reception of I-BNE and RIC DME.</p>	<p>ALSF-2</p>	<p>MISSED APPROACH: Climb to 800 then climbing right turn to 2000 on RIC VORTAC R-018 to EPICS INT/RIC 17.3 DME and hold.</p>
--	---------------	---

<p>ATIS 119.15 263.025</p>	<p>POTOMAC APP CON 126.4 282.375 (001°-185°) 126.75 307.2 (186°-360°)</p>	<p>RICHMOND TOWER 121.1 257.8</p>	<p>GND CON 121.9 348.6</p>
---------------------------------------	---	--	---------------------------------------



ELEV 168	D	TDZE 161
----------	----------	----------



800	2000	EPICS	JOMUS RIC 5.4	JUVPO RIC 14.3
↑	RIC R-018	△	1700	1700
<p>VGSI and ILS glidepath not coincident (VGSI Angle 3.00/TCH 79).</p>			<p>GS 3.00° TCH 54</p>	
4.7 NM		8.9 NM		

CATEGORY	A	B	C	D
S-ILS 34	RA 156/14 150 DA 311			

SA CATEGORY I ILS - SPECIAL AIRCREW & AIRCRAFT CERTIFICATION REQUIRED

TDZ/CL Rwy 34
HIRL Rws 2-20 and 16-34
REIL Rwy 20

NE-3, 11 JUN 2026 to 09 JUL 2026

NE-3, 11 JUN 2026 to 09 JUL 2026