

LOC I-BNE 110.7	APP CRS 337°	Rwy Ldg TDZE Apt Elev	9003 161 168
---------------------------	------------------------	-----------------------------	---

ILS or LOC RWY 34

RICHMOND INTL (RIC)

DME required for LOC only.

▼ For inop ALS, increase S-ILS 34 Cat E visibility to RVR 4000 and S-LOC 34 Cat E visibility to 1/2 SM. DME from RIC VORTAC. DME use requires simultaneous reception of I-BNE and RIC DME.



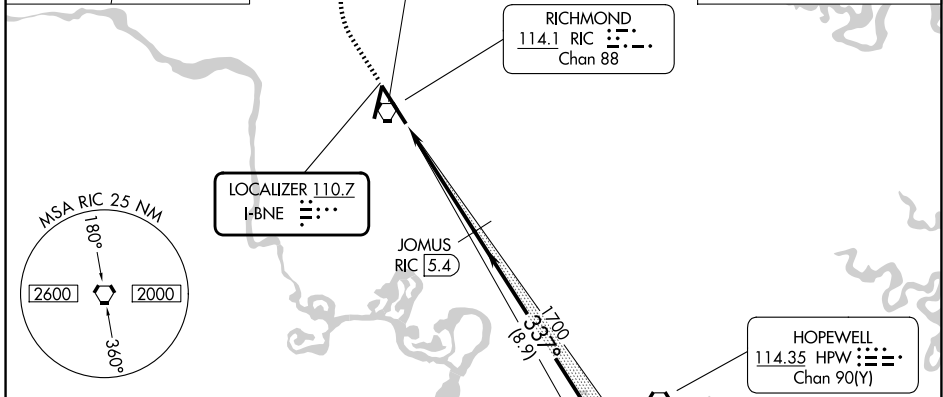
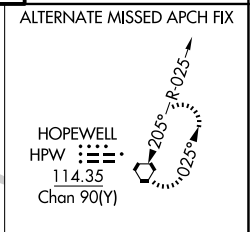
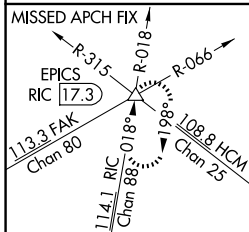
MISSED APPROACH: Climb to 800 then climbing right turn to 2000 on RIC VORTAC R-018 to EPICS INT/RIC 17.3 DME and hold.

ATIS 119.15 263.025

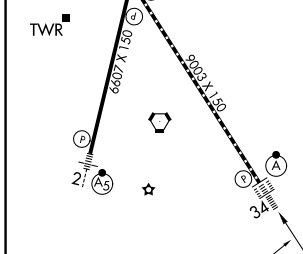
POTOMAC APP CON 126.4 282.375 (001°-185°) 126.75 307.2 (186°-360°)
--

RICHMOND TOWER 121.1 257.8

GND CON 121.9 348.6



ELEV 168	D	TDZE 161
-----------------	----------	-----------------



800	2000	EPICS	JOMUS RIC 5.4	JUVPO RIC 14.3
↑	RIC R-018	△	1700	1700
			337°	1700
			1700	
VGS1 and ILS glidepath not coincident (VGS1 Angle 3.00/TCH 79).			GS 3.00° TCH 54	
1.2 NM		3.5 NM		8.9 NM

TDZ/CL Rwy 34 HIRL Rws 2-20 and 16-34 REIL Rwy 20 FAF to MAP 4.7 NM	CATEGORY	A	B	C	D	E
	S-ILS 34	361/18		200 (200-1/2)		
	S-LOC 34	620/24	459 (500-1/2)	620/45	459 (500-7/8)	
	CIRCLING	660-1	492 (500-1)	700-1 1/2 532 (600-1 1/2)	720-2 552 (600-2)	740-2 572 (600-2)

NE-3, 11 JUN 2026 to 09 JUL 2026

NE-3, 11 JUN 2026 to 09 JUL 2026