


APP CRS	Rwy Ldg	6607
023°	TDZE	161
	Apt Elev	168

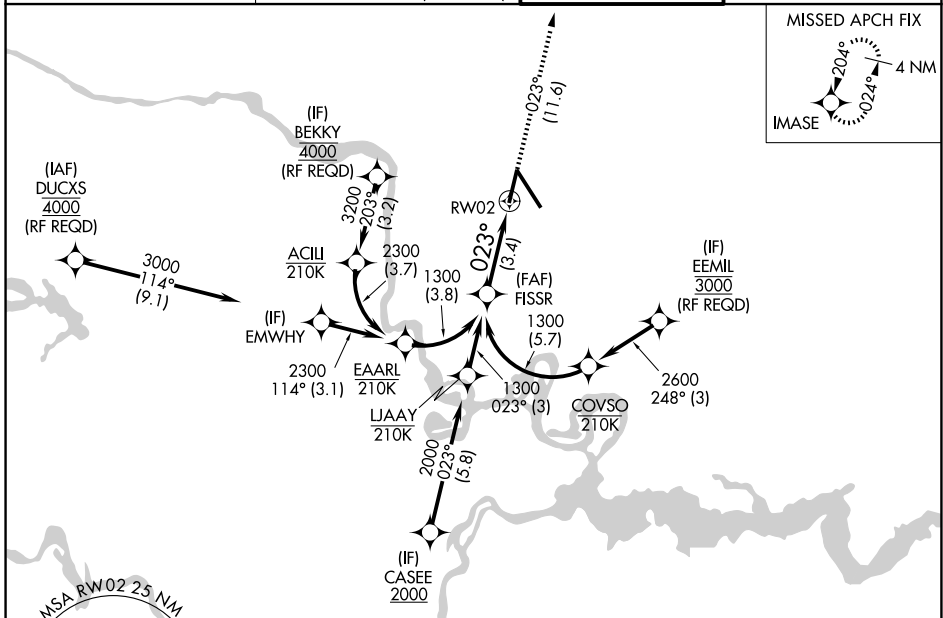
RNAV (RNP) Y RWY 2

RICHMOND INTL (RIC)

RNP AR APCH. MALSR  MISSED APPROACH: Climb to 2100 on track 023° to IMASE and hold.

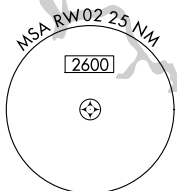
▼ For uncompensated Baro-VNAV systems, procedure NA below -11°C (13°F) or above 54°C (130°F). Rwy 2 helicopter visibility reduction below 3/4 SM NA. For inop ALS, increase RNP 0.11 all Cats visibility to 1 SM and RNP 0.3 all Cats visibility to 1 1/4 SM.

ATIS 119.15 263.025	POTOMAC APP CON 126.4 282.375 (001°-185°) 126.75 307.2 (186°-360°)	RICHMOND TOWER 121.1 257.8	GND CON 121.9 348.6
-------------------------------	--	--------------------------------------	-------------------------------

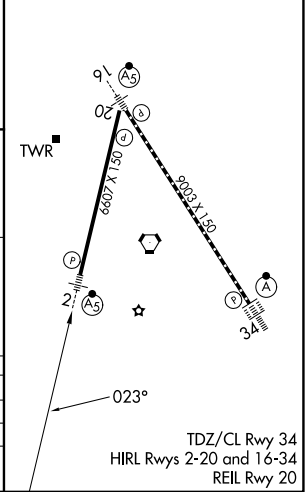
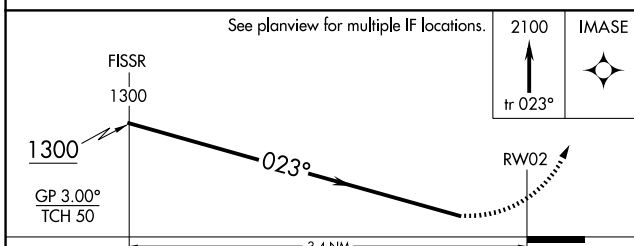


NE-3, 11 JUN 2026 to 09 JUL 2026

NE-3, 11 JUN 2026 to 09 JUL 2026



ELEV 168	D TDZE 161
----------	-------------------



CATEGORY	A	B	C	D
RNP 0.11 DA		506-3/4	345 (400-3/4)	
RNP 0.30 DA		595-1	434 (500-1)	

AUTHORIZATION REQUIRED

TDZ/CL Rwy 34
HIRL Rwys 2-20 and 16-34
REIL Rwy 20