

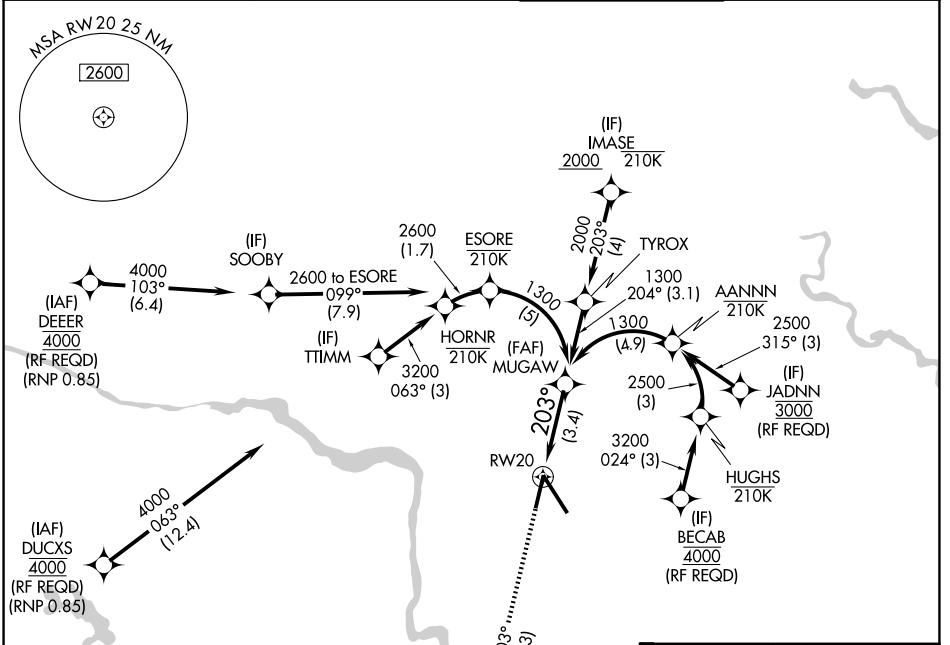
APP CRS	Rwy Ldg	<b>6607</b>
<b>203°</b>	TDZE	<b>168</b>
	Apt Elev	<b>168</b>

# RNAV (RNP) Y RWY 20

RICHMOND INTL (RIC)

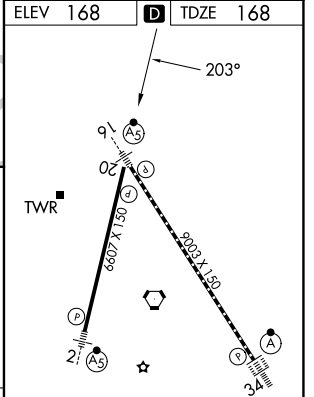
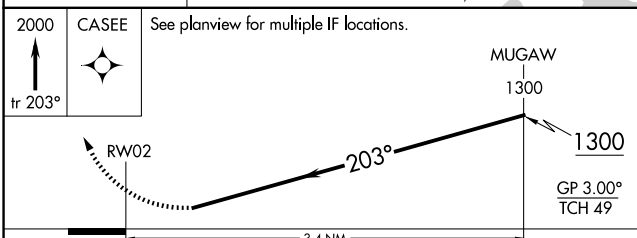
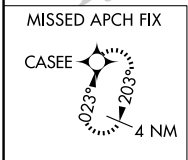
RNP AR APCH.	MISSED APPROACH: Climb to 2000 on track 203° CASEE and hold.
▼ For uncompensated Baro-VNAV systems, procedure NA below -11°C or above 54°C.	

ATIS <b>119.15 263.025</b>	POTOMAC APP CON <b>126.4 282.375</b> (001°-185°) <b>126.75 307.2</b> (186°-360°)	RICHMOND TOWER <b>121.1 257.8</b>	GND CON <b>121.9 348.6</b>
-------------------------------	----------------------------------------------------------------------------------------	--------------------------------------	-------------------------------



NE-3, 11 JUN 2026 to 09 JUL 2026

NE-3, 11 JUN 2026 to 09 JUL 2026



CATEGORY	A	B	C	D
RNP 0.11 DA		505-1	337 (400-1)	
RNP 0.30 DA		613-1½	445 (500-1½)	

## AUTHORIZATION REQUIRED

TDZ/CL Rwy 34  
HIRL Rwy 2-20 and 16-34  
REIL Rwy 20