

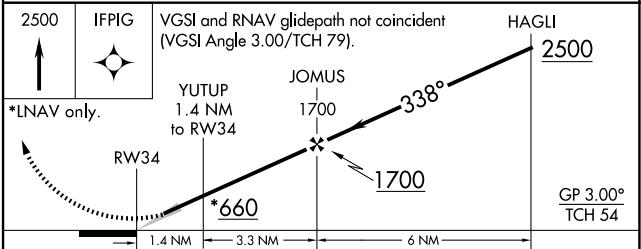
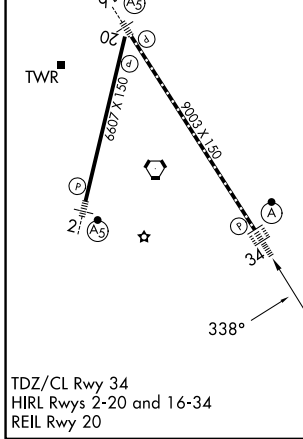
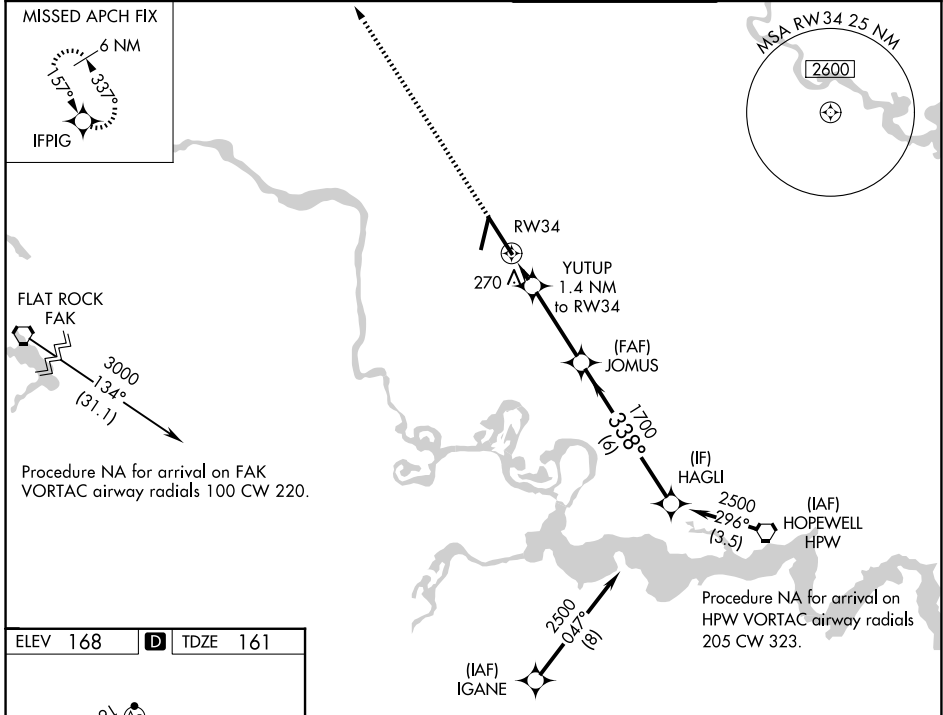
WAAS CH 97520 W34A	APP CRS 338°	Rwy Ldg TDZE 161 Apt Elev 168	9003
--	------------------------	---	-------------

RNAV (GPS) Z RWY 34

RICHMOND INTL (RIC)

RNP APCH. ▼ For uncompensated Baro-VNAV systems, LNAV/VNAV NA below -11°C or above 54°C. For inop ALS, increase LNAV/VNAV all Cats visibility to 1¼ SM and LNAV Cats C and D visibility to RVR 5500.	ALSF-2 A	MISSED APPROACH: Climb to 2500 direct IFPIG and hold.
---	-------------	--

ATIS 119.15 263.025	POTOMAC APP CON 126.4 282.375 (001°-185°) 126.75 307.2 (186°-360°)	RICHMOND TOWER 121.1 257.8	GND CON 121.9 348.6
-------------------------------	--	--------------------------------------	-------------------------------



CATEGORY	A	B	C	D
LPV DA		361/18	200 (200-½)	
LNAV/VNAV DA		530/37	369 (400-¾)	
LNAV MDA	520/24	359 (400-½)	520/30	359 (400-¾)
CIRCLING	660-1	492 (500-1)	700-1½ 532 (600-1½)	720-2 552 (600-2)

NE-3, 11 JUN 2026 to 09 JUL 2026

NE-3, 11 JUN 2026 to 09 JUL 2026