

VORTAC RIC 114.1 Chan 88	APP CRS 323°	Rwy Ldg TDZE 161 Apt Elev 167	9003
--	------------------------	---	-------------

VOR RWY 34

RICHMOND INTL (RIC)

DME or RADAR required. RADAR required for procedure entry.

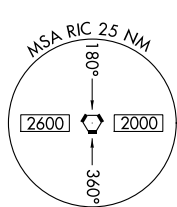
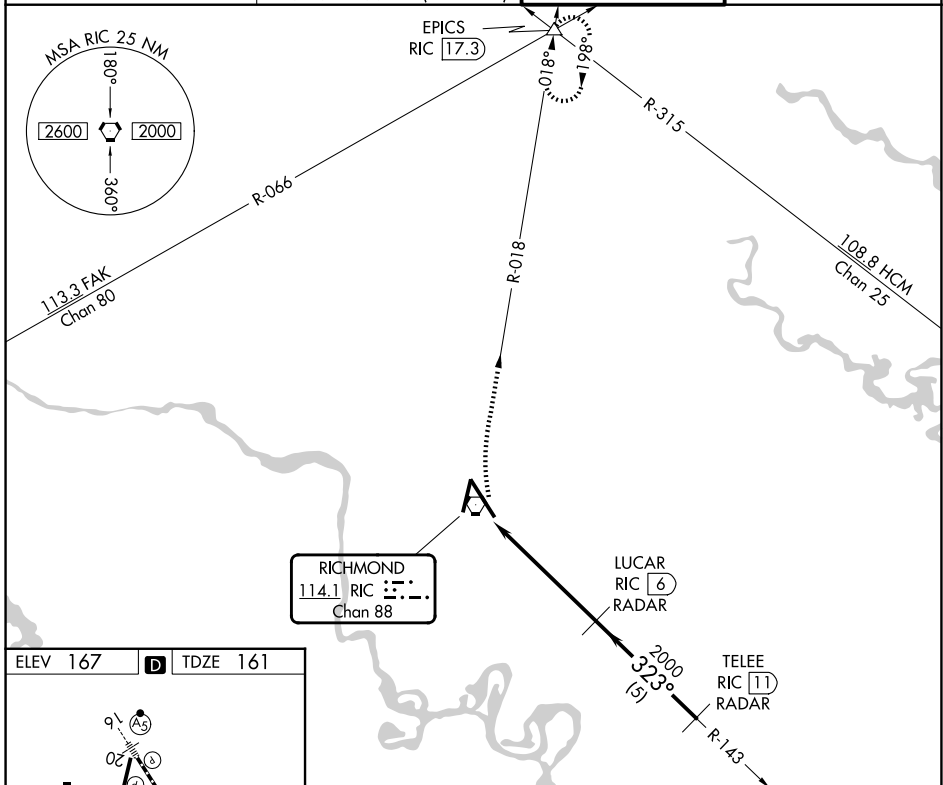
ALSF-2

MISSED APPROACH: Climbing right turn to 2000 via RIC R-018 to EPICS INT and hold.

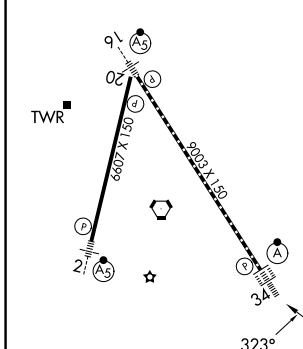
▼ For inop ALS, increase S-34 Cat C/D visibility to RVR 5500.



ATIS 119.15 263.025	POTOMAC APP CON 126.4 282.375 (001°-185°) 126.75 307.2 (186°-360°)	RICHMOND TOWER 121.1 257.8	GND CON 121.9 348.6
-------------------------------	--	--------------------------------------	-------------------------------



ELEV 167	D	TDZE 161
----------	----------	----------



TDZ/CL Rwy 34 HIRL Rwy 2-20 and 16-34 REIL Rwy 20					
FAF to MAP 5.3 NM					
Knots	60	90	120	150	180
Min:Sec	5:18	3:32	2:39	2:07	1:46

2000	EPICS RIC R-018	VGSI and descent angles not coincident (VGSI Angle 3/00/TCH 79).	LUCAR RIC 6 RADAR	TELEE RIC 11 RADAR
CATEGORY	A	B	C	D
S-34	540/24	379 (400-1/2)	540/40 379 (400-3/4)	540/50 379 (400-1)
CIRCLING	660-1	493 (500-1)	700-1 1/2 533 (600-1 1/2)	720-2 553 (600-2)

NE-3, 11 JUN 2026 to 09 JUL 2026

NE-3, 11 JUN 2026 to 09 JUL 2026