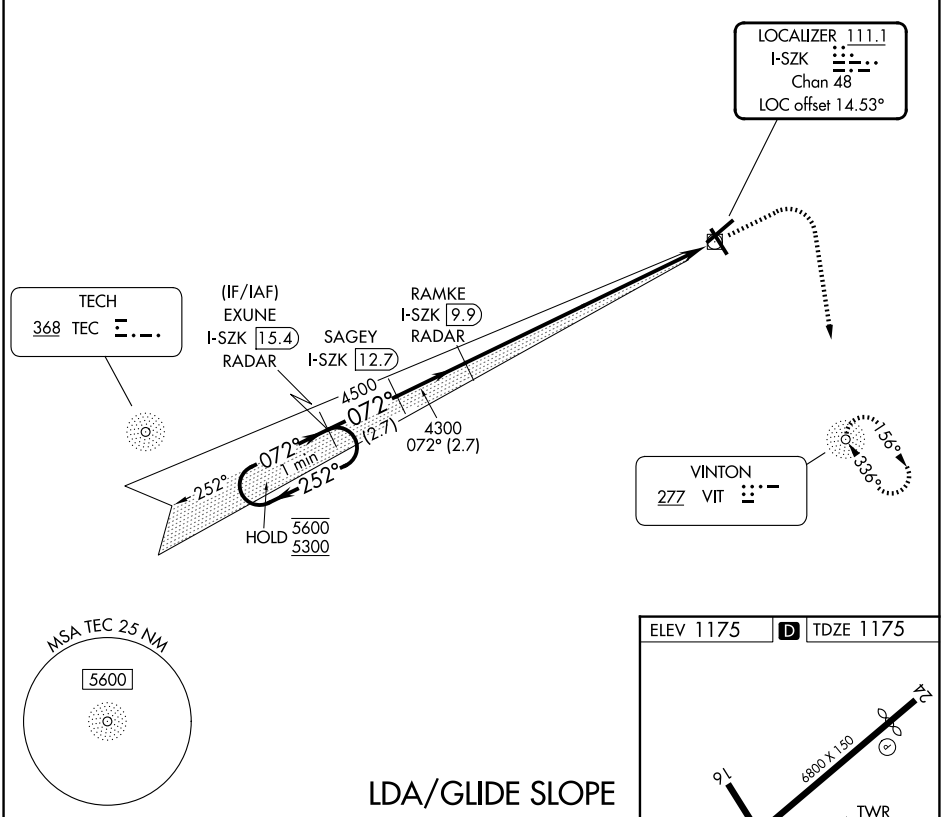


LOC/DME I-SZK 111.1 Chan 48	APP CRS 072°	Rwy Ldg 6800 TDZE 1175 Apt Elev 1175
---	------------------------	---

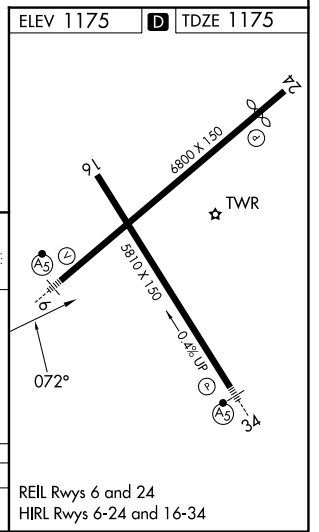
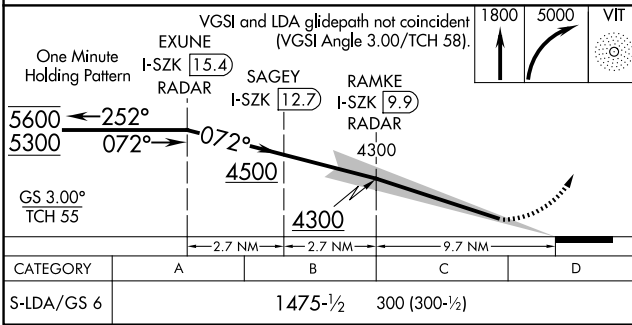
LDA Z RWY 6

ROANOKE/BLACKSBURG RGNL (WOODRUM FLD) (R.O.A)

ADF required. RADAR required for procedure entry.		MALSR	MISSED APPROACH: Climb to 1800 then climbing right turn to 5000 direct VIT NDB and hold, continue climb-in-hold to 5000. Missed approach requires minimum climb of 350 feet per NM to 3600.
-12°C For inop ALS, increase S-LDA/GS 6 visibility all Cats to 7/8 SM.		AS	
ATIS 132.375	ROANOKE APP CON 133.225 339.8	ROANOKE TOWER 118.3 257.8	GND CON 121.9 257.8



LDA/GLIDE SLOPE



NE-3, 11 JUN 2026 to 09 JUL 2026

NE-3, 11 JUN 2026 to 09 JUL 2026

LDA Z RWY 6