

(MONAT4.MONAT) 25275

ROANOKE/BLACKSBURG RGNL (WOODRUM FLD) (R.O.A)

# MONAT FOUR DEPARTURE (RNAV)

AL-349 (FAA)

ROANOKE, VIRGINIA

ATIS  
 132.375  
 CLNC DEL  
 119.7  
 GND CON  
 121.9 257.8  
 ROANOKE DEP CON  
 133.225 339.8  
 ROANOKE TOWER  
 118.3 257.8

RNAV 1 - DME/DME/IRU or GPS required.

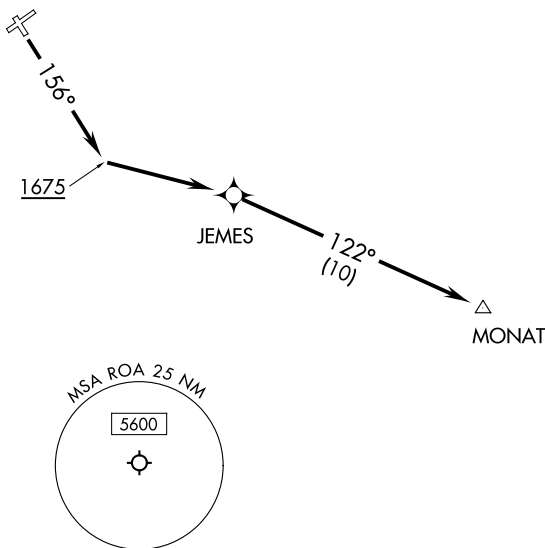
RADAR required for non-GPS equipped aircraft.

**TOP ALTITUDE:  
5000**

### TAKEOFF MINIMUMS:

Rwys 6, 24, 34: NA-Air Traffic.

Rwy 16: Standard with minimum climb  
of 500' per NM to 1675.



NOTE: Chart not to scale.



### DEPARTURE ROUTE DESCRIPTION

**TAKEOFF RUNWAY 16:** Climb on heading 156° to 1675, then left turn direct JEMES then on track 122° to MONAT, thence...

...maintain 5000, expect filed altitude within 10 minutes after departure.

# MONAT FOUR DEPARTURE (RNAV)

(MONAT4.MONAT) 31OCT24

ROANOKE, VIRGINIA

ROANOKE/BLACKSBURG RGNL (WOODRUM FLD) (R.O.A)

NE-3, 11 JUN 2026 to 09 JUL 2026

NE-3, 11 JUN 2026 to 09 JUL 2026