

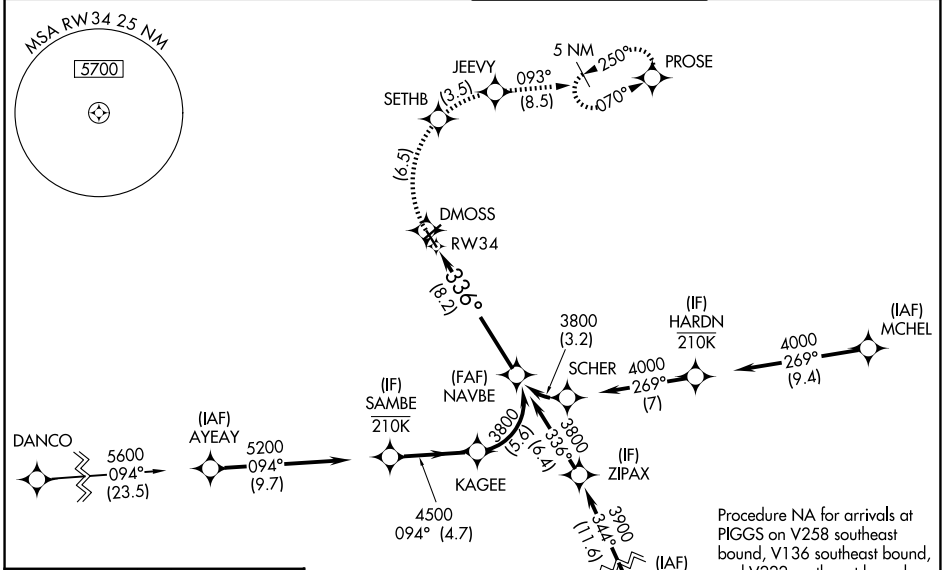
APP CRS 336°	Rwy Ldg TDZE Apt Elev	5810 1160 1175
------------------------	-----------------------------	---

RNAV (RNP) Z RWY 34

ROANOKE/BLACKSBURG RGNL (WOODRUM FLD) (R.O.A)

RNP AR APCH. RF required.	MALSR 	MISSED APPROACH: Climb to 6000 on track 336° to DMOSS, right turn to SETHB, right turn to JEEVY and on track 093° to PROSE and hold. * Missed approach requires minimum climb of 350 feet per NM to 4100. # Missed approach requires minimum climb of 415 feet per NM to 4100.
Missed approach requires RNP less than 1.0. For inop ALS, increase RNP 0.30* all Cats visibility to 1 1/2 SM. Inop table does not apply to RNP 0.30. For uncompensated Baro-VNAV systems, procedure NA below -14°C or above 54°C.		

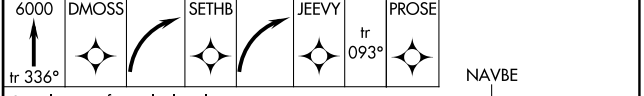
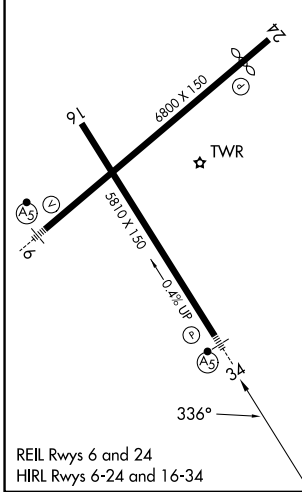
ATIS 132.375	ROANOKE APP CON 133.225 339.8	ROANOKE TOWER 118.3 257.8	GND CON 121.9 257.8
------------------------	---	-------------------------------------	-------------------------------



NE-3, 11 JUN 2026 to 09 JUL 2026

NE-3, 11 JUN 2026 to 09 JUL 2026

ELEV 1175	D	TDZE 1160
-----------	----------	-----------



See planview for multiple IF locations.

CATEGORY	A	B	C	D
RNP 0.15 DA #		1495-1/2	335 (400-1/2)	
RNP 0.30 DA*		1646-1	486 (500-1)	
RNP 0.30 DA		2115-4	955 (1000-4)	

RNAV (RNP) Z RWY 34

AUTHORIZATION REQUIRED