

(SCUTA3.SCUTA) 25275

ROANOKE/BLACKSBURG RGNL (WOODRUM FLD) (R.O.A.)

SCUTA THREE DEPARTURE (RNAV) AL-349 (FAA)

ROANOKE, VIRGINIA

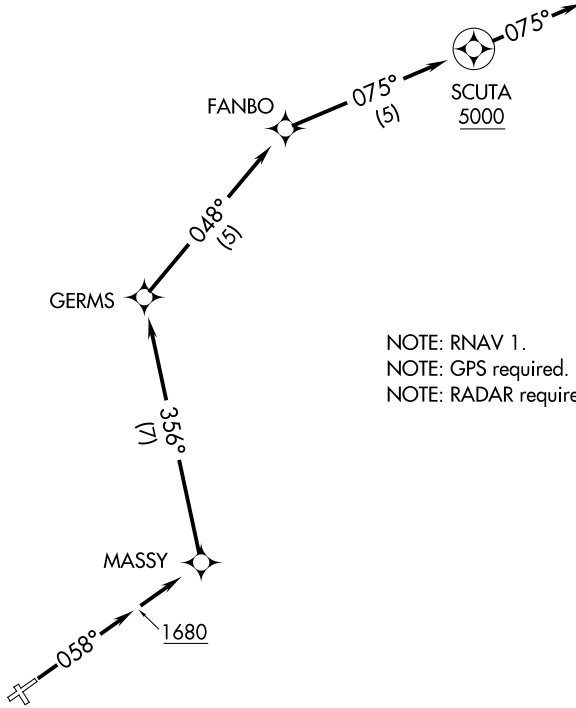
ATIS  
132.375  
CLNC DEL  
119.7  
GND CON  
121.9 257.8  
ROANOKE DEP CON  
133.225 339.8  
ROANOKE TOWER  
118.3 257.8

**TOP ALTITUDE:  
5000**

TAKEOFF MINIMUMS

Rwys 16, 24, 34: NA - Air Traffic.

Rwy 6: Standard with minimum climb  
of 560' per NM to 2900.



NOTE: RNAV 1.  
NOTE: GPS required.  
NOTE: RADAR required.

NOTE: Chart not to scale.



DEPARTURE ROUTE DESCRIPTION

TAKEOFF RUNWAY 6: Climb heading 058° to 1680, then direct MASSY.  
Then on depicted route to cross SCUTA at or above 5000 on heading 075° for  
RADAR vectors. Maintain 5000 or assigned altitude, expect clearance to filed  
altitude 10 minutes after departure.

SCUTA THREE DEPARTURE (RNAV)

ROANOKE, VIRGINIA

(SCUTA3.SCUTA) 10OCT19

ROANOKE/BLACKSBURG RGNL (WOODRUM FLD) (R.O.A.)

NE-3, 11 JUN 2026 to 09 JUL 2026

NE-3, 11 JUN 2026 to 09 JUL 2026