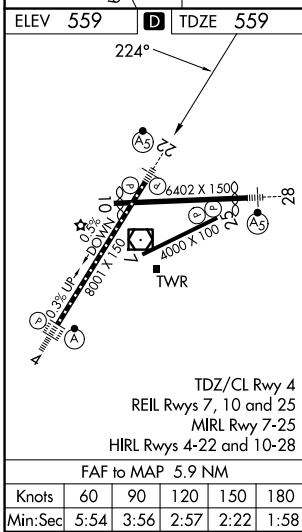
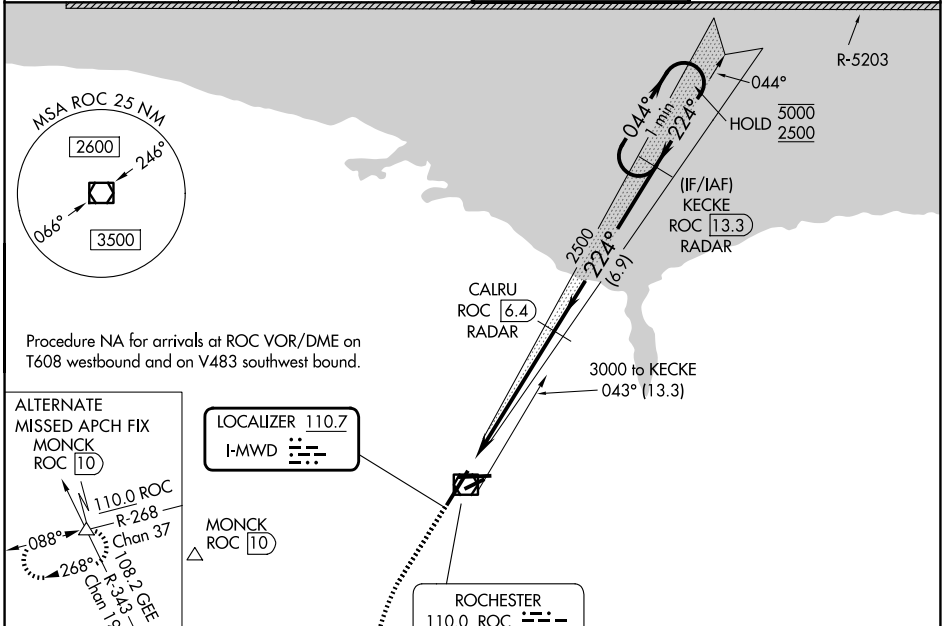


LOC I-MWD 110.7	APP CRS 224°	Rwy Ldg TDZE Apt Elev	8001 559 559
---------------------------	------------------------	-----------------------------	---

ILS or LOC RWY 22

FREDERICK DOUGLASS/GREATER ROCHESTER INTL (ROC)

DME or RADAR required.		MALSR 	MISSED APPROACH: Climb to 1000 then climbing left turn to 4000 direct GEE VOR/DME and hold.
▼ When R-5203 active hold in lieu NA. DME from ROC VOR/DME. ▲ DME use requires simultaneous reception of I-MWD and ROC DME. * RVR 1800 authorized with use of FD or AP or HUD to DA.			
ATIS 124.825	ROCHESTER APP CON 119.55 269.6	ROCHESTER TOWER 118.3 254.3	GND CON 121.7



NE-2, 11 JUN 2026 to 09 JUL 2026

NE-2, 11 JUN 2026 to 09 JUL 2026