

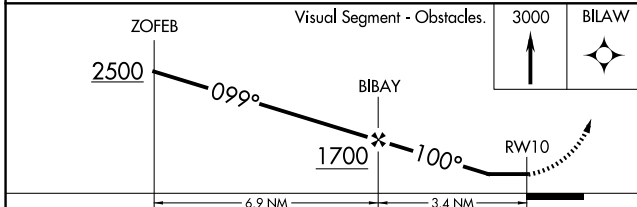
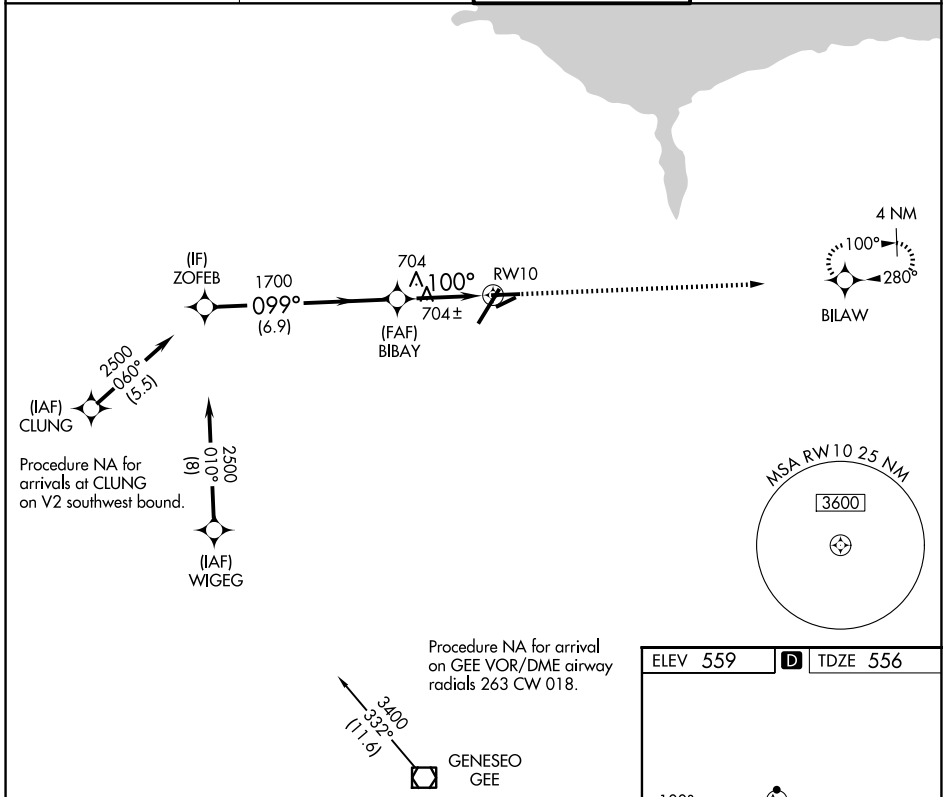
WAAS CH <b>70734</b> <b>W10A</b>	APP CRS <b>100°</b>	Rwy Ldg TDZE <b>5502</b> <b>556</b> Apt Elev <b>559</b>
--	------------------------	---

# RNAV (GPS) RWY 10

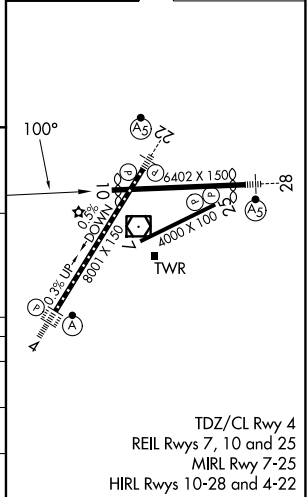
FREDERICK DOUGLASS/GREATER ROCHESTER INTL (ROC)

RNP APCH - GPS.	MISSED APPROACH: Climb to 3000 direct BILAW and hold.
Rwy 10 helicopter visibility reduction below RVR 4000 NA.	

ATIS <b>124.825</b>	ROCHESTER APP CON <b>119.55 269.6</b>	ROCHESTER TOWER <b>118.3 254.3</b>	GND CON <b>121.7</b>
------------------------	--	---------------------------------------	-------------------------



ELEV 559	<b>D</b> TDZE 556
----------	-------------------



CATEGORY	A	B	C	D
LP MDA	980/55	424 (500-1)	980-1¼	424 (500-1¼)
LNAV MDA	980/55	424 (500-1)	980-1¼	424 (500-1¼)
CIRCLING	1060-1	501 (600-1)	1500-2¾ 941 (1000-2¾)	1500-3 941 (1000-3)

TDZ/CL Rwy 4  
REIL Rws 7, 10 and 25  
MIRL Rwy 7-25  
HIRL Rws 10-28 and 4-22

# RNAV (GPS) RWY 10

NE-2, 11 JUN 2026 to 09 JUL 2026

NE-2, 11 JUN 2026 to 09 JUL 2026