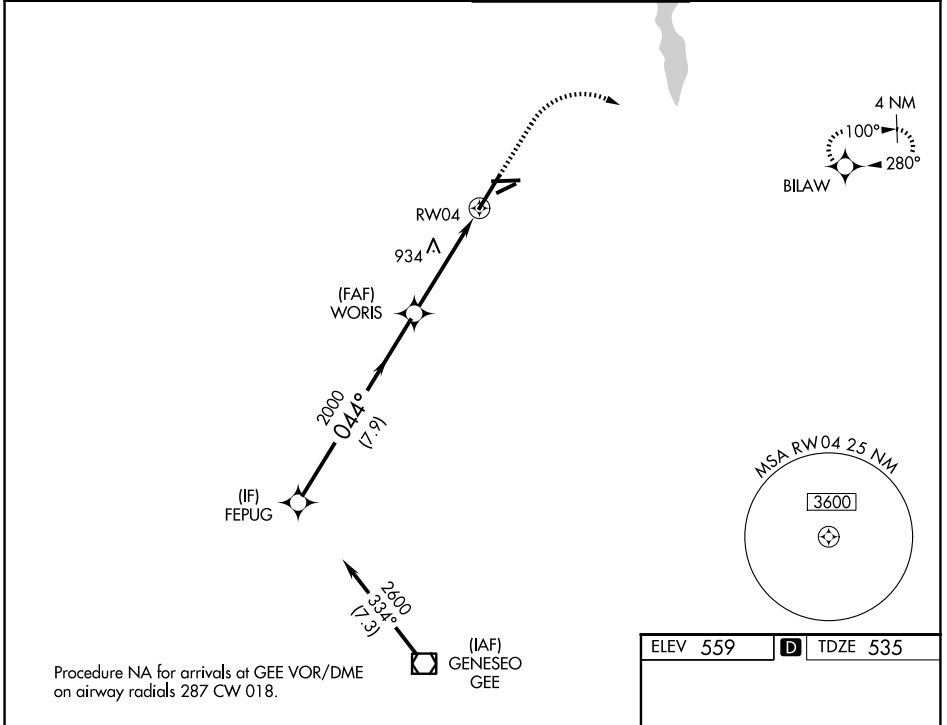


WAAS CH 45611 W04A	APP CRS 044°	Rwy Ldg TDZE Apt Elev	8001 535 559
--	------------------------	-----------------------------	---

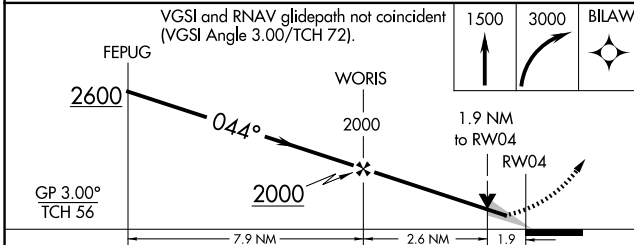
RNAV (GPS) RWY 4
FREDERICK DOUGLASS/GREATER ROCHESTER INTL (ROC)

RNP APCH - GPS.	ALSIF-2	MISSED APPROACH: Climb to 1500 then climbing right turn to 3000 direct BILAW and hold.
<p>▼ For uncompensated Baro-VNAV systems, LNAV/VNAV NA below -18°C or above 54°C. For inop ALS, increase LNAV Cats C/D visibility to 1 7/8 SM.</p>		

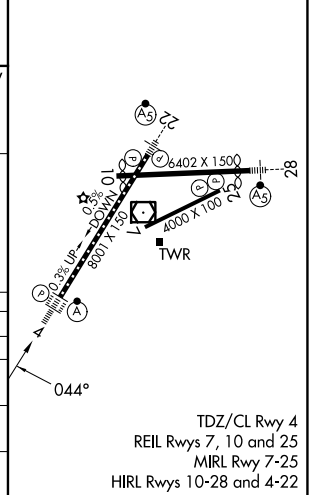
ATIS 124.825	ROCHESTER APP CON 119.55 269.6	ROCHESTER TOWER 118.3 254.3	GND CON 121.7
------------------------	--	---------------------------------------	-------------------------



ELEV 559	D TDZE 535
----------	-------------------



CATEGORY	A	B	C	D
LPV DA		735/18	200 (200-1/2)	
LNAV/VNAV DA		1290-2 1/4	755 (800-2 1/4)	
LNAV MDA	1200/24	665 (700-1/2)	1200-1 1/2	665 (700-1 1/2)
CIRCLING	1200-1	641 (700-1)	1500-2 3/4 941 (1000-2 3/4)	1500-3 941 (1000-3)



NE-2, 11 JUN 2026 to 09 JUL 2026

NE-2, 11 JUN 2026 to 09 JUL 2026