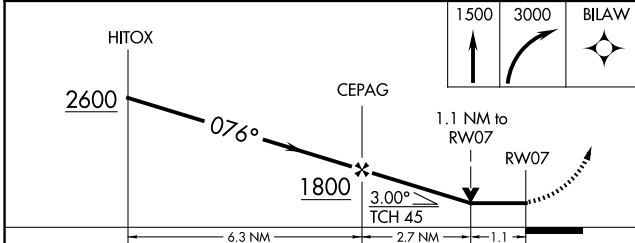
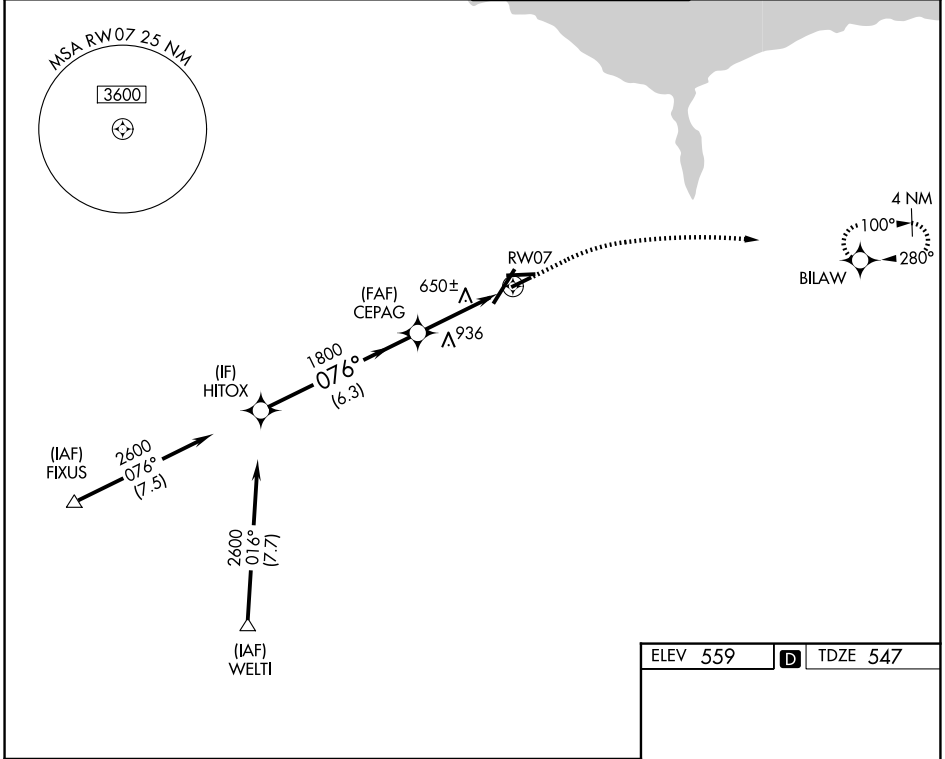


WAAS CH 61334 W07A	APP CRS 076°	Rwy Ldg TDZE Apt Elev	4000 547 559
--	------------------------	-----------------------------	---

RNAV (GPS) RWY 7

FREDERICK DOUGLASS/GREATER ROCHESTER INTL (ROC)

RNP APCH - GPS.		MISSED APPROACH: Climb to 1500 then climbing right turn to 3000 direct BILAW and hold.	
▼ ▲	Rwy 7 helicopter visibility reduction below 3/4 SM NA.		
ATIS 124.825	ROCHESTER APP CON 119.55 269.6	ROCHESTER TOWER 118.3 254.3	GND CON 121.7



ELEV 559	D	TDZE 547
----------	----------	----------

TDZ/CL Rwy 4
REIL Rwys 7, 10 and 25
MIRL Rwy 7-25
HIRL Rwys 10-28 and 4-22

CATEGORY	A	B	C	D
LP MDA	940-1	393 (400-1)	940-1 1/8	393 (400-1 1/8)
LNAV MDA	1060-1	513 (600-1)	1060-1 3/8	513 (600-1 3/8)
CIRCLING	1060-1	501 (600-1)	1500-2 3/4 941 (1000-2 3/4)	1500-3 941 (1000-3)

NE-2, 11 JUN 2026 to 09 JUL 2026

NE-2, 11 JUN 2026 to 09 JUL 2026