


LOC/DME I-MHR <b>111.35</b> Chan 50(Y)	APP CRS <b>221°</b>	Rwy Ldg TDZE Apt Elev	<b>11301</b> <b>98</b> <b>98</b>
--	------------------------	-----------------------------	--

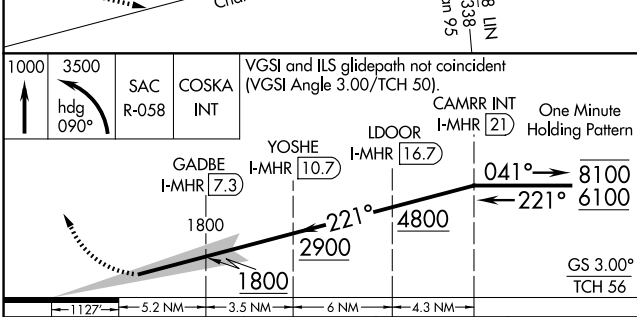
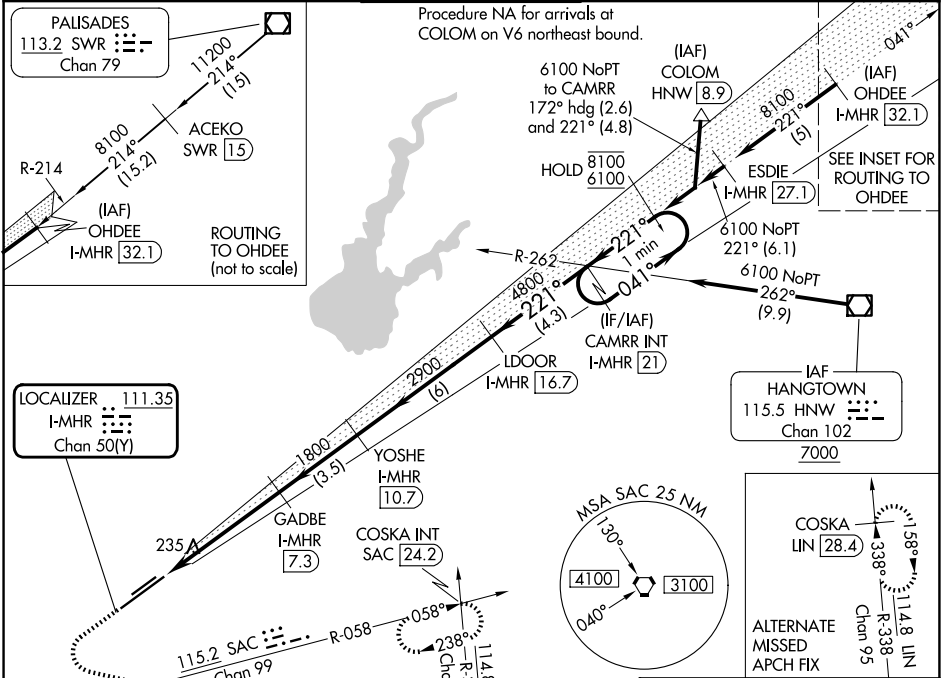
# ILS Z RWY 22L (SA CAT I & II)

SACRAMENTO MATHER (MHR)

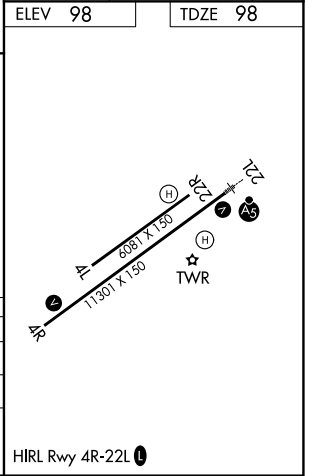
**⚠** Requires specific OPSPEC, MSPEC, or LOA approval.  
Procedure NA when tower closed.

**MALSR**  
 MISSED APPROACH: Climb to 1000, then climbing left turn to 3500 on heading 090° and SAC VORTAC R-058 to COSKA INT/SAC 24.2 DME and hold, continue climb-in-hold to 3500.

ATIS <b>118.325</b>	NORCAL APP CON <b>127.4 317.5</b>	MATHER TOWER ★ <b>120.65(CTAF) 282.25</b>	GND CON <b>121.85 307.9</b>	UNICOM <b>122.95</b>
------------------------	--------------------------------------	--	--------------------------------	-------------------------



1000	3500	SAC R-058	COSKA INT	VGSI and ILS glidepath not coincident (VGSI Angle 3.00/TCH 50).	
				CAMRR INT I-MHR [21]	One Minute Holding Pattern
		GADBE I-MHR [7.3]	YOSHE I-MHR [10.7]	LDOOR I-MHR [16.7]	8100 ← 221° → 6100
		1800	2900	4800	GS 3.00° TCH 56
		1127	5.2 NM	3.5 NM	6 NM
CATEGORY	A	B	C	D	
S-ILS 22L	SA CAT I	RA 136/14	150	DA 248	
S-ILS 22L	SA CAT II	RA 95/12	100	DA 198	



**SA CATEGORY I & II ILS - SPECIAL AIRCREW & AIRCRAFT CERTIFICATION REQUIRED**

HIRL Rwy 4R-22L

SW-2, 11 JUN 2026 to 09 JUL 2026

SW-2, 11 JUN 2026 to 09 JUL 2026