

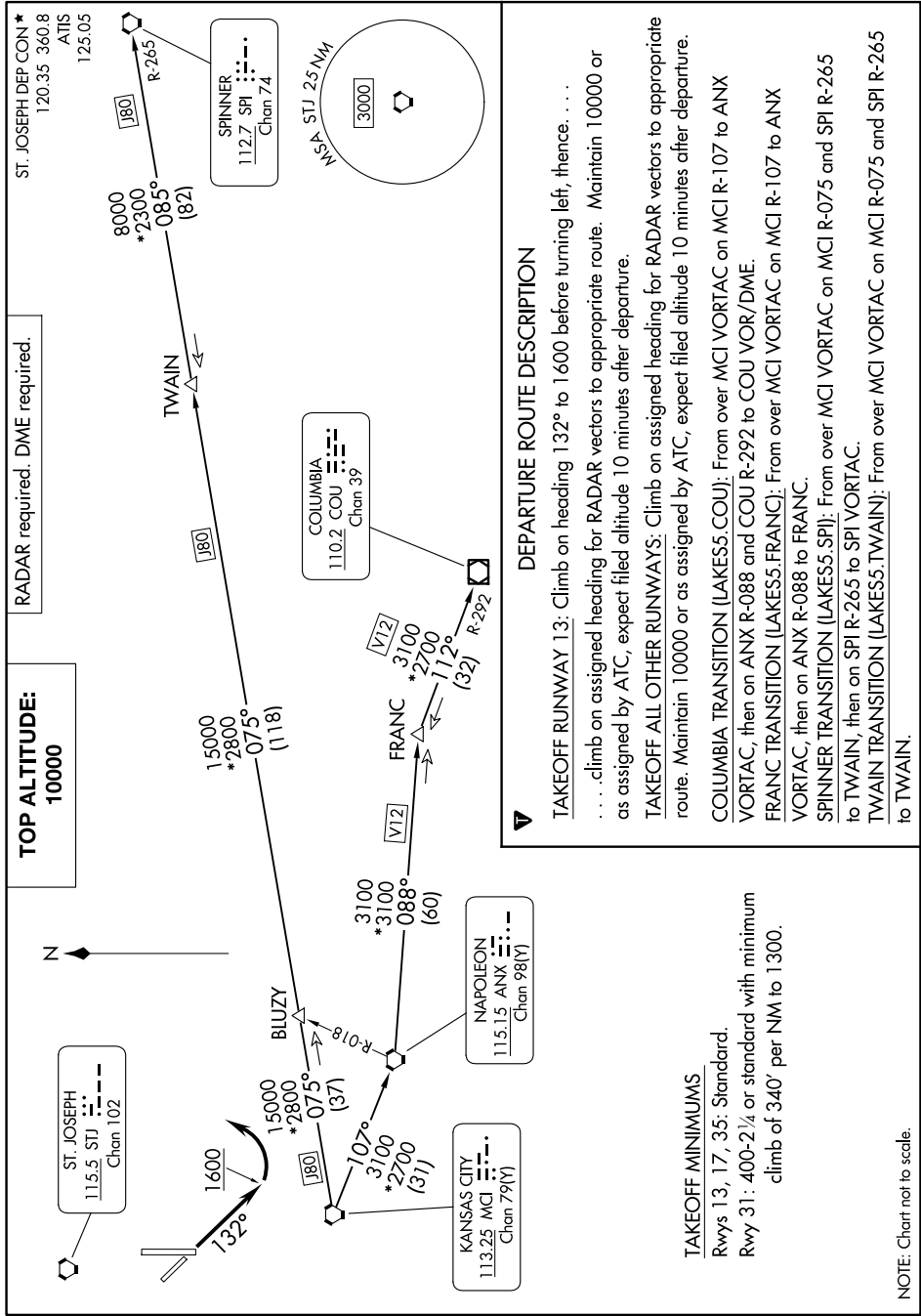
LAKES FIVE DEPARTURE

AL-359 (FAA)

ROSECRANS MEML (STJ)

ST. JOSEPH, MISSOURI

9202 UNR 60 202020 UNR 14 'E-CN



LAKES FIVE DEPARTURE

(LAKES5.MCI) 05OCT23

ST. JOSEPH, MISSOURI

ROSECRANS MEML (STJ)

DEPARTURE ROUTE DESCRIPTION

TAKEOFF RUNWAY 13: Climb on heading 132° to 1600 before turning left, thence climb on assigned heading for RADAR vectors to appropriate route. Maintain 10000 or as assigned by ATC, expect filed altitude 10 minutes after departure.

TAKEOFF ALL OTHER RUNWAYS: Climb on assigned heading for RADAR vectors to appropriate route. Maintain 10000 or as assigned by ATC, expect filed altitude 10 minutes after departure.

COLUMBIA TRANSITION (LAKES5:COU): From over MCI VORTAC on MCI R-107 to ANX VORTAC, then on ANX R-088 and COU R-292 to COU VOR/DME.

FRANC TRANSITION (LAKES5:FRANC): From over MCI VORTAC on MCI R-107 to ANX VORTAC, then on ANX R-088 to FRANC.

SPINNER TRANSITION (LAKES5:SPI): From over MCI VORTAC on MCI R-075 and SPI R-265 to TWAIN, then on SPI R-265 to SPI VORTAC.

TWAIN TRANSITION (LAKES5:TWAIN): From over MCI VORTAC on MCI R-075 and SPI R-265 to TWAIN.

TAKEOFF MINIMUMS

Rwys 13, 17, 35: Standard.
 Rwy 31: 400-2 1/4 or standard with minimum climb of 340' per NM to 1300.

NOTE: Chart not to scale.

NC-3, 11 JUN 2026 to 09 JUL 2026