

WAAS CH 57935 W13A	APP CRS 132°	Rwy Ldg TDZE Apt Elev	4797 811 827
--	------------------------	-----------------------------	---

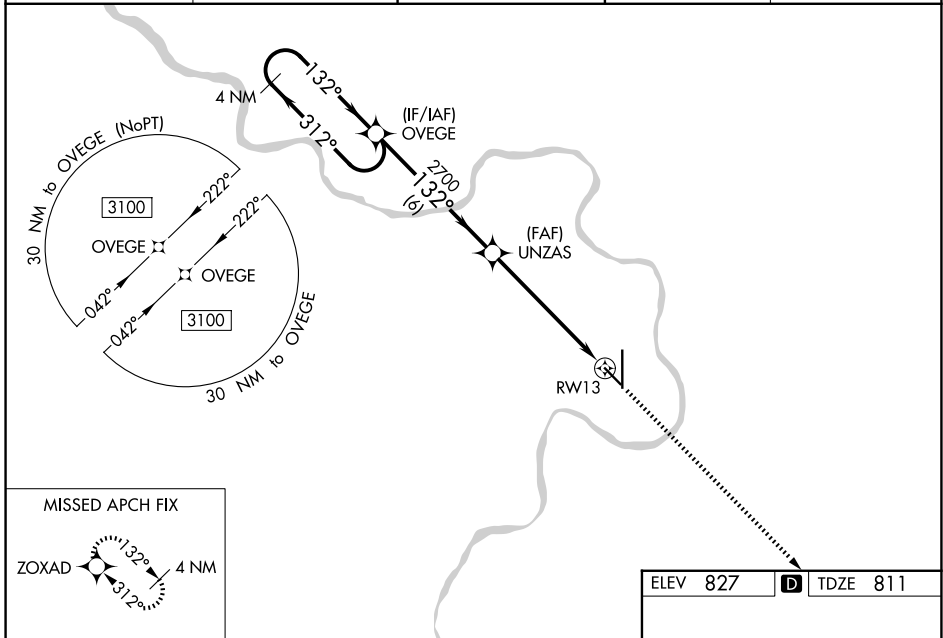
RNAV (GPS) RWY 13

ROSECRANS MEML (STJ)

⚠ For uncompensated Baro-VNAV systems, LNAV/VNAV NA below -20°C (-4°F) or above 54°C (130°F). DME/DME RNP-0.3 NA. Straight-In minimums NA at night. Baro-VNAV and VDP NA when using Kansas City Intl altimeter setting. Helicopter visibility reduction below 3/4 SM NA. When local altimeter setting not received, use Kansas City Intl altimeter setting and increase all DA 97 feet, and LPV visibility 3/8 mile all Cats, LNAV/VNAV visibility 1/4 mile all Cats; increase all MDA 100 feet and Circling Cat C 1/2 mile, Cat D 1/4 mile.

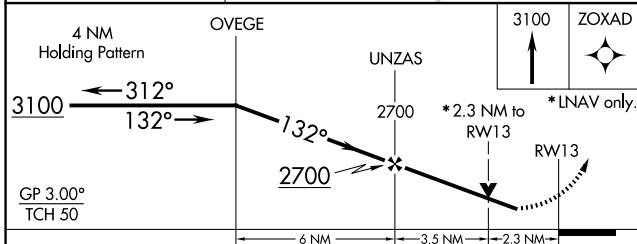
MISSED APPROACH:
Climb to 3100 direct ZOAXD and hold.

ATIS 125.05	ST. JOSEPH APP CON * 120.35 360.8	ST. JOSEPH TOWER * 126.9 (CTAF) 239.0	GND CON 121.9	UNICOM 122.95
-----------------------	---	---	-------------------------	-------------------------

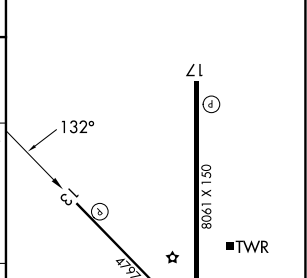


NC-3, 11 JUN 2026 to 09 JUL 2026

NC-3, 11 JUN 2026 to 09 JUL 2026



ELEV 827	D	TDZE 811
----------	----------	----------



CATEGORY	A	B	C	D
LPV DA		1377-1 7/8	566 (600-1 1/8)	
LNAV/VNAV DA		1416-2 1/4	605 (600-2 1/4)	
LNAV MDA	1580-1 769 (800-1)	1580-1 1/4 769 (800-1 1/4)	1580-2 1/2	769 (800-2 1/2)
CIRCLING	1580-1 753 (800-1)	1580-1 1/4 753 (800-1 1/4)	1620-2 1/2 793 (800-2 1/2)	1640-2 3/4 813 (900-2 3/4)

MIRL Rwy 13-31 **Ⓛ**
 HIRL Rwy 17-35 **Ⓛ**
 REIL Rws 17 and 35 **Ⓛ**