

WAAS CH 65835 W31A	APP CRS 312°	Rwy Ldg TDZE Apt Elev	4797 812 827
--	------------------------	-----------------------------	---

RNAV (GPS) RWY 31

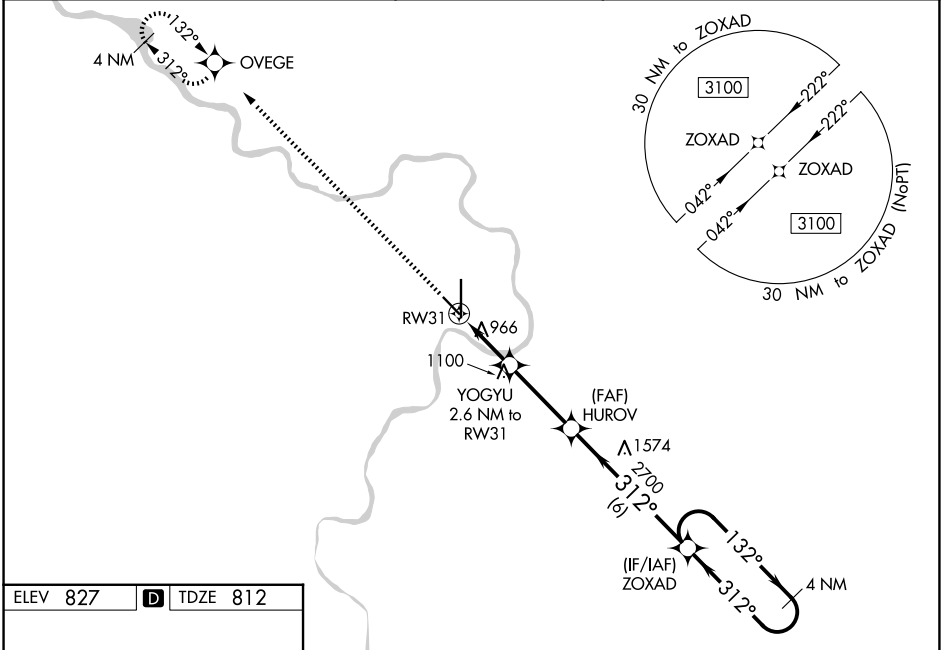
ROSECRANS MEML (STJ)

▽ For uncompensated Baro-VNAV systems, LNAV/VNAV NA below -20°C (-4°F) or above 54°C (130°F). DME/DME RNP-0.3 NA. Baro-VNAV and VDP NA when using Kansas City Intl altimeter setting. Straight-In minimums NA at night. When local altimeter setting not received, use Kansas City Intl altimeter setting and increase all DA 97 feet and increase LPV visibility 1/8 mile and LNAV/VNAV visibility 3/8 mile all Cats; increase all MDA 100 feet and LNAV Cat C and D visibility 1/4 mile, and Circling Cat C 1/2 mile, Cat D 1/4 mile.

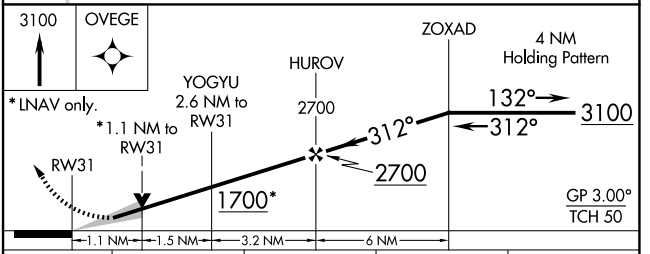
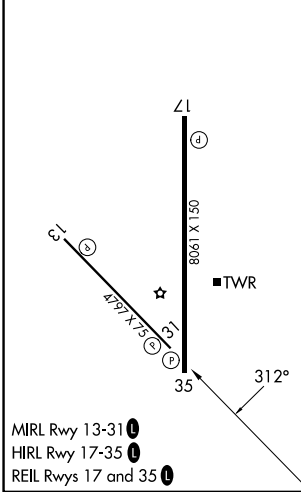
▲ ASR/PAR

MISSED APPROACH:
Climb to 3100 direct OVEGE and hold.

ATIS 125.05	ST. JOSEPH APP CON ★ 120.35 360.8	ST. JOSEPH TOWER ★ 126.9(CTAF) 0239.0	GND CON 121.9	UNICOM 122.95
-----------------------	---	---	-------------------------	-------------------------



ELEV 827	D	TDZE 812
----------	----------	----------



CATEGORY	A	B	C	D
LPV DA	1062-1		250 (300-1)	
LNAV/VNAV DA	1255-1½		443 (500-1½)	
LNAV MDA	1220-1 408 (400-1)		1220-1½ 408 (400-1½)	
CIRCLING	1400-1 573 (600-1)	1420-1 593 (600-1)	1620-2¼ 793 (800-2¼)	1640-2¾ 813 (900-2¾)

NC-3, 11 JUN 2026 to 09 JUL 2026

NC-3, 11 JUN 2026 to 09 JUL 2026