

WAAS CH <b>77819</b> W35A	APP CRS <b>356°</b>	Rwy Ldg TDZE Apt Elev	<b>8061</b> <b>815</b> <b>827</b>
---------------------------------	------------------------	-----------------------------	---

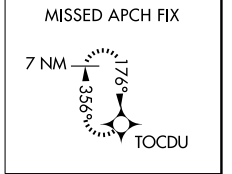
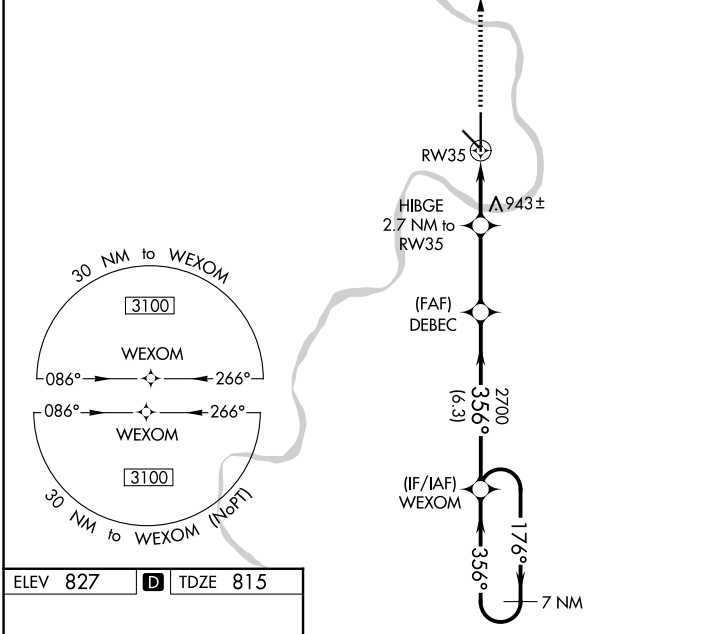
# RNAV (GPS) RWY 35

ROSECRANS MEML (STJ)

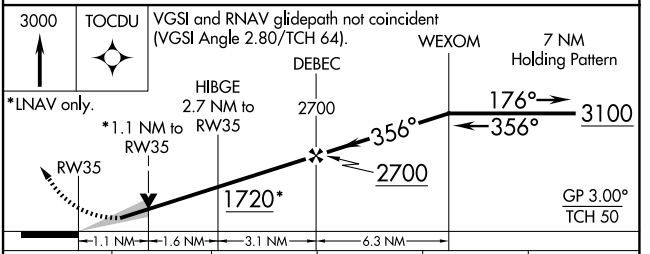
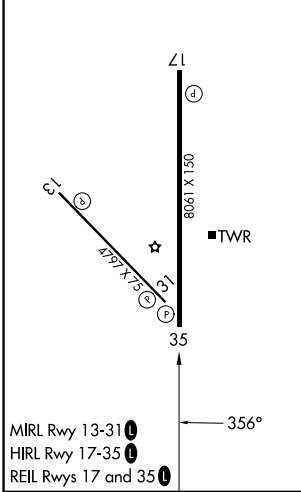
**⚠** For uncompensated Baro-VNAV systems, LNAV/VNAV NA below -20°C (-4°F) or above 54°C (130°F). DME/DME RNP-0.3 NA. VDP and Baro-VNAV NA when using Kansas City ASR/PAR Inlt altimeter setting. When local altimeter setting not received, use Kansas City Inlt altimeter setting and increase all DA 97 feet and increase LPV all Cats visibility to RVR 5000, and LNAV/VNAV all Cats visibility to 1 1/4 mile; increase all MDA 100 feet, and increase LNAV Cat C/D/E visibility 1/4 mile, and Circling Cat C 1/2 mile, Cat D 1/2 mile.

**MISSED APPROACH:**  
Climb to 3000 direct TOCDU and hold.

ATIS <b>125.05</b>	ST. JOSEPH APP CON ★ <b>120.35 360.8</b>	ST. JOSEPH TOWER ★ <b>126.9(CTAF) 0 239.0</b>	GND CON <b>121.9</b>	UNICOM <b>122.95</b>
-----------------------	---	--	-------------------------	-------------------------



ELEV 827	<b>D</b>	TDZE 815
----------	----------	----------



CATEGORY	A	B	C	D	E
LPV DA		1015/40	200 (200-3/4)		
LNAV/VNAV DA		1096/45	281 (300-7/8)		
LNAV MDA	1200/55	385 (400-1)	1200/60	385 (400-1 1/4)	
CIRCLING	1400-1 573 (600-1)	1420-1 593 (600-1)	1620-2 1/4 793 (800-2 1/4)	1640-2 3/4 813 (900-2 3/4)	1760-3 933 (1000-3)

NC-3, 11 JUN 2026 to 09 JUL 2026

NC-3, 11 JUN 2026 to 09 JUL 2026