

# TIFTO EIGHT DEPARTURE

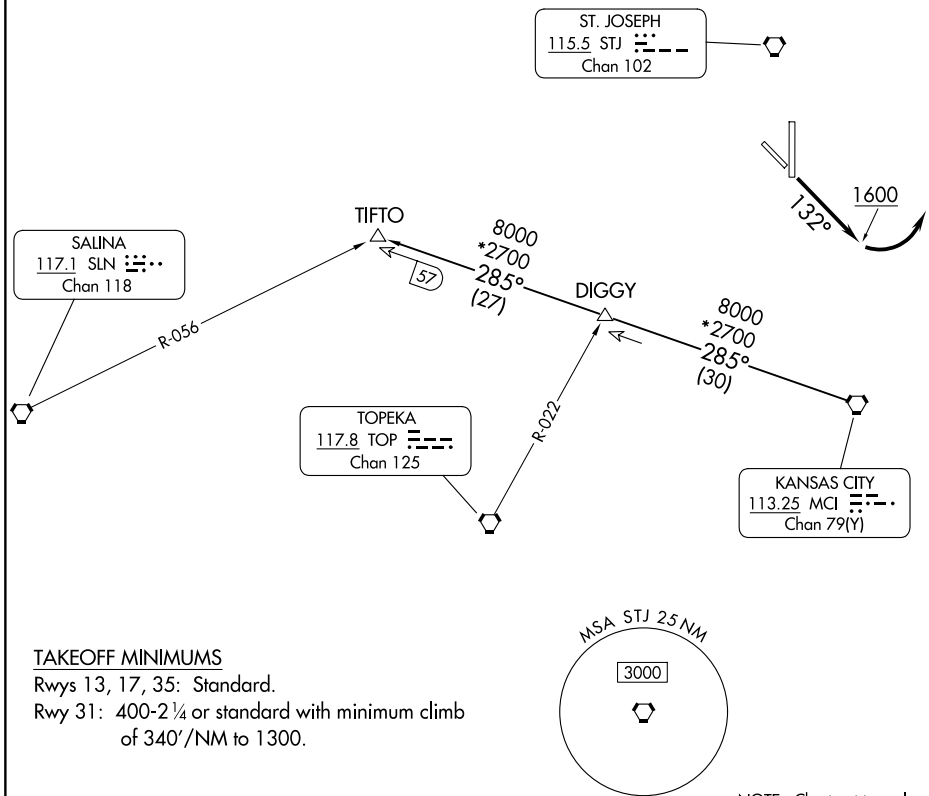
AL-359 (FAA)

ROSECRANS MEML (STJ)  
ST. JOSEPH, MISSOURI

**TOP ALTITUDE:  
10000**

RADAR and DME required.

ST. JOSEPH DEP CON ★  
120.35 360.8  
ATIS  
125.05



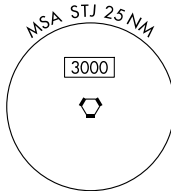
NC-3, 11 JUN 2026 to 09 JUL 2026

NC-3, 11 JUN 2026 to 09 JUL 2026

### TAKEOFF MINIMUMS

Rwys 13, 17, 35: Standard.

Rwy 31: 400-2 ¼ or standard with minimum climb of 340'/NM to 1300.



NOTE: Chart not to scale



### DEPARTURE ROUTE DESCRIPTION

TAKEOFF RUNWAY 13: Climb on heading 132° to 1600 before turning left, thence. . . .

. . . .climb on assigned heading for RADAR vectors to appropriate route. Maintain 10000, expect filed altitude 10 minutes after departure.

TAKEOFF ALL OTHER RUNWAYS: Climb on assigned heading for RADAR vectors to appropriate route. Maintain 10000, expect filed altitude 10 minutes after departure.

TIFTO TRANSITION (TIFTO8.TIFTO): From over MCI VORTAC on MCI R-285 to TIFTO.

# TIFTO EIGHT DEPARTURE