

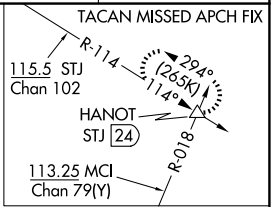
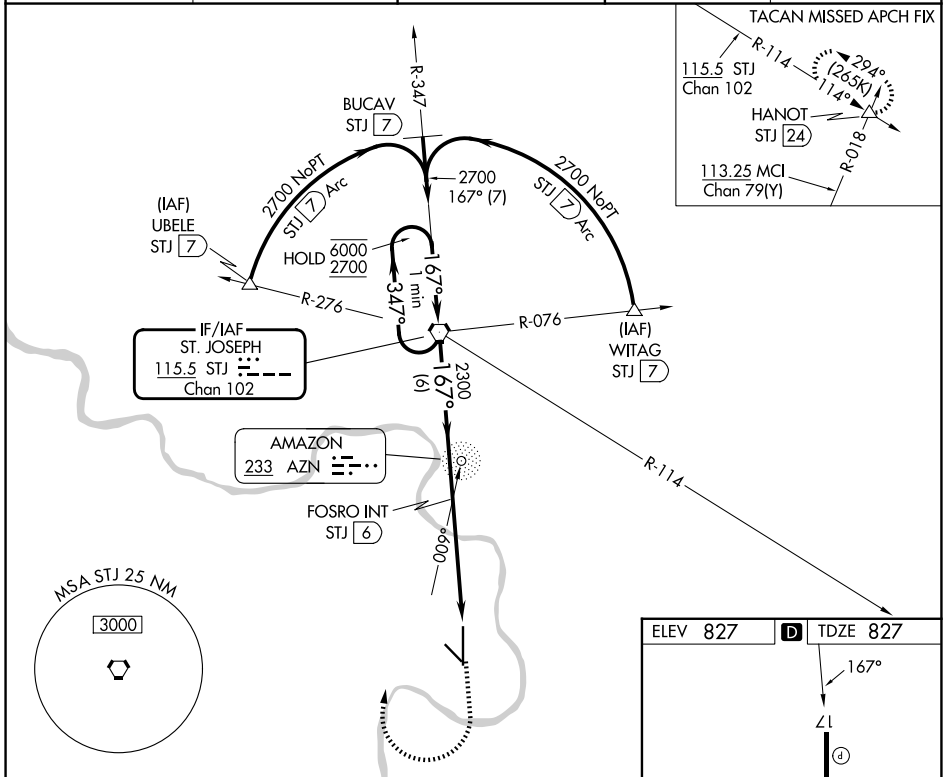
VORTAC STJ	APP CRS	Rwy Ldg	8061
115.5	167°	TDZE	827
Chan 102		Apt Elev	827

VOR or TACAN RWY 17

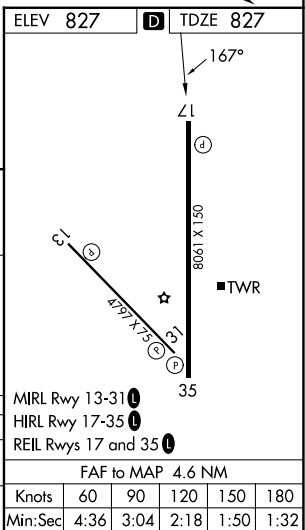
ROSECRANS MEML (STJ)

ADF or DME required.		MISSED APPROACH: Climb to 1500 then climbing right turn to 2700 direct STJ VORTAC and hold. (TACAN aircraft climb to 2300 then climbing left turn to 3100 direct HANOT INT/STJ 24 DME and hold NW, LT, 114° inbound, GPS required).		
<p>▽ Missed approach to STJ VORTAC NA for Cat E aircraft.</p> <p>ASR/PAR</p>				

ATIS 125.05	ST. JOSEPH APP CON * 120.35 360.8	ST. JOSEPH TOWER * 126.9 (CTAF) 239.0	GND CON 121.9	UNICOM 122.95
-----------------------	---	---	-------------------------	-------------------------



One Minute Holding Pattern	*STJ VORTAC			1500	2700	STJ
	6000 ← 347°	2700 → 167°	→ 167°	↑	↷	⬠
*Course reversal NA for Cat E aircraft.	FOSRO INT STJ (6)		2.92° TCH 56	STJ (8.7)	STJ (10.6)	
	6 NM		2.7 NM	1.9 NM		
CATEGORY	A	B	C	D	E	
S-17	1500-1	673 (700-1)	1500-1 7/8		673 (700-1 7/8)	
CIRCLING	1500-1	673 (700-1)	1620-2 1/4 793 (800-2 1/4)	1640-2 3/4 813 (900-2 3/4)	1760-3 933 (1000-3)	



NC-3, 11 JUN 2026 to 09 JUL 2026

NC-3, 11 JUN 2026 to 09 JUL 2026