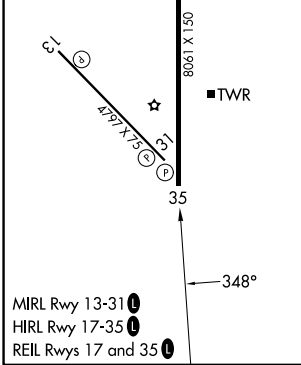
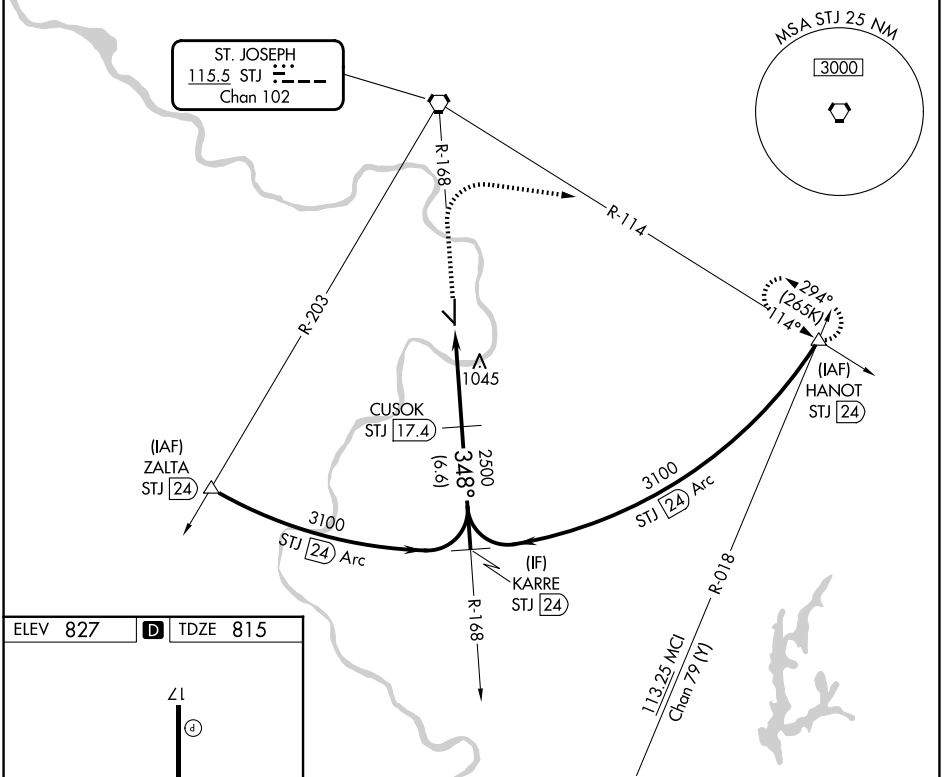


STJ VORTAC 115.5 Chan 102	APP CRS 348°	Rwy Ldg TDZE Apt Elev	8061 815 827
---	------------------------	-----------------------------	---

VOR or TACAN RWY 35

ROSECRANS MEML (STJ)

DME required.		MISSED APPROACH: Climb to 2700 then climbing right turn to 3100 on heading 090° and STJ VORTAC R-114 to HANOT/24 DME and hold.		
ATIS 125.05	ST. JOSEPH APP CON * 120.35 360.8	ST. JOSEPH TOWER * 126.9 (CTAF) 239.0	GND CON 121.9	UNICOM 122.95



2700	3100	STJ R-114	HANOT	CUSOK STJ 17.4	KARRE STJ 24
↑	hdg R-114	△			
	090°				
		STJ 13.5	3100		
		STJ 11.9	2500		
		1.6	3.9 NM	6.6 NM	
		≤ 2.79°	TCH 64		
CATEGORY	A	B	C	D	E
S-35	1360/55	545 (600-1)	1360-1 ⁵ / ₈ 545 (600-1 ⁵ / ₈)	1360-1 ³ / ₄ 545 (600-1 ³ / ₄)	1360-2 545 (600-2)
CIRCLING	1400-1 573 (600-1)	1420-1 593 (600-1)	1620-2 ¹ / ₄ 793 (800-2 ¹ / ₄)	1640-2 ³ / ₄ 813 (900-2 ³ / ₄)	1760-3 933 (1000-3)

NC-3, 11 JUN 2026 to 09 JUL 2026

NC-3, 11 JUN 2026 to 09 JUL 2026