

WILDCAT SIX DEPARTURE

AL-359 (FAA)

ROSECRANS MEML (STJ)
ST. JOSEPH, MISSOURI

ST. JOSEPH DEP CON★
120.35 360.8
ATIS
125.05

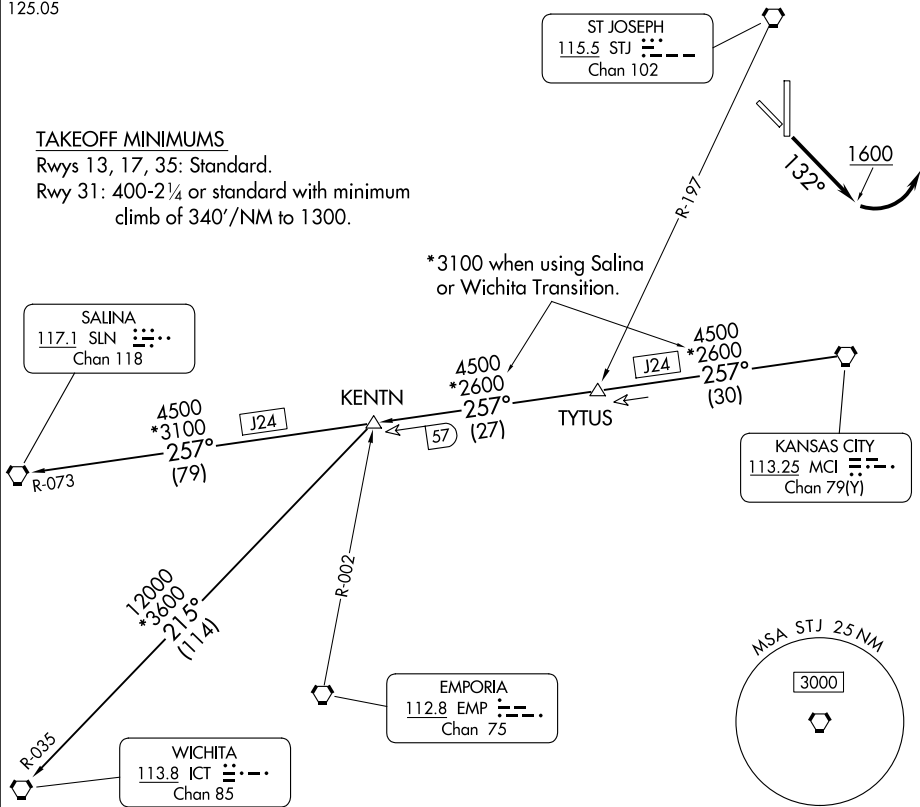
RADAR required.

**TOP ALTITUDE:
10000**

TAKEOFF MINIMUMS

Rwys 13, 17, 35: Standard.

Rwy 31: 400-2¼ or standard with minimum climb of 340'/NM to 1300.



NOTE: Chart not to scale.

DEPARTURE ROUTE DESCRIPTION

TAKEOFF RUNWAY 13: Climb on heading 132° to 1600 before turning left, then climb on assigned heading for RADAR vectors to appropriate route. Maintain 10000, expect filed altitude 10 minutes after departure.

TAKEOFF ALL OTHER RUNWAYS: Climb on assigned heading for RADAR vectors to appropriate route. Maintain 10000, expect filed altitude 10 minutes after departure.

KENTON TRANSITION (WLDCT6.KENTN): From over MCI VORTAC on MCI R-257 to KENTN.

SALINA TRANSITION (WLDCT6.SLN): From over MCI VORTAC on MCI R-257 and SLN R-073 to SLN VORTAC.

WICHITA TRANSITION (WLDCT6.ICT): From over MCI VORTAC on MCI R-257 to KENTN, then on ICT R-035 to ICT VORTAC.

WILDCAT SIX DEPARTURE

NC-3, 11 JUN 2026 to 09 JUL 2026

NC-3, 11 JUN 2026 to 09 JUL 2026