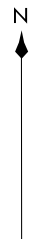


**TOP ALTITUDE:  
5000**



D-ATIS  
 125.025 379.925  
 CLNC DEL  
 119.5 363.1  
 CPDLC  
 GND CON  
 121.9 348.6 (Inbound)  
 121.65 377.175 (Outbound)  
 118.925 227.125 (Rwy 11/29)  
 ST. LOUIS TOWER  
 120.05 284.6 (Rwys 12L/30R, 24)  
 118.5 257.7 (Rwy 12R/30L)  
 132.475 239.275 (Rwys 6, 11/29)  
 ST. LOUIS DEP CON  
 128.1 307.05

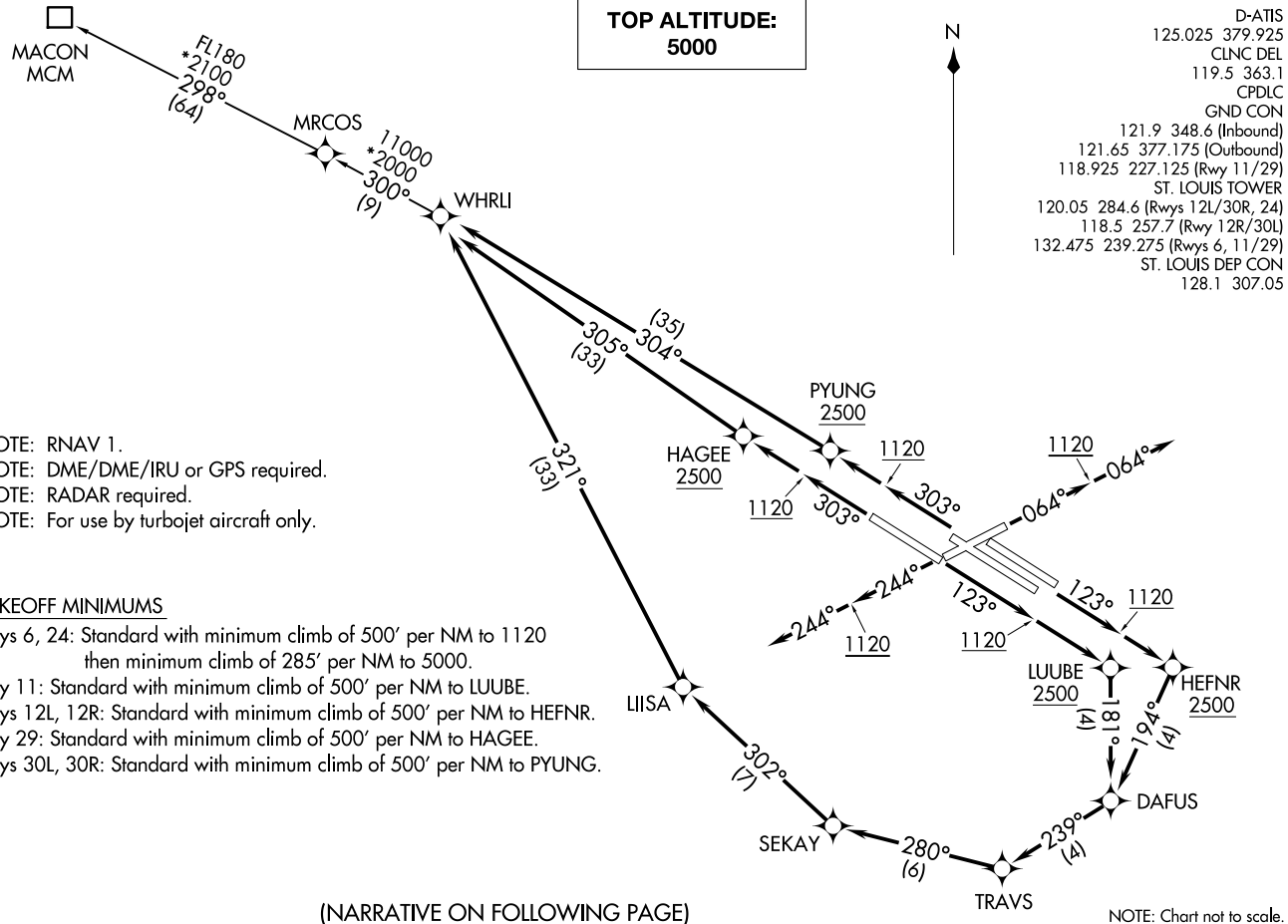
WHRLI SEVEN DEPARTURE (RNAV)  
(WHRLI7·WHRLI) 070CT121

ST. LOUIS, MISSOURI  
ST LOUIS LAMBERT INTL (STL)

(WHRLI7·WHRLI) 21280  
WHRLI SEVEN DEPARTURE (RNAV)

AL-360 (FAA)

ST LOUIS LAMBERT INTL (STL)  
ST. LOUIS, MISSOURI



NOTE: RNAV 1.  
 NOTE: DME/DME/IRU or GPS required.  
 NOTE: RADAR required.  
 NOTE: For use by turbojet aircraft only.

TAKEOFF MINIMUMS

Rwys 6, 24: Standard with minimum climb of 500' per NM to 1120 then minimum climb of 285' per NM to 5000.  
 Rwy 11: Standard with minimum climb of 500' per NM to LUUBE.  
 Rwys 12L, 12R: Standard with minimum climb of 500' per NM to HEFNR.  
 Rwy 29: Standard with minimum climb of 500' per NM to HAGEE.  
 Rwys 30L, 30R: Standard with minimum climb of 500' per NM to PYUNG.

(NARRATIVE ON FOLLOWING PAGE)

NOTE: Chart not to scale.



DEPARTURE ROUTE DESCRIPTION

TAKEOFF RUNWAY 6: Climb on heading 064° to 1120, then on heading 064° or as assigned by ATC, expect RADAR vectors to WHRLI. Thence. . . .

TAKEOFF RUNWAY 24: Climb on heading 244° to 1120, then on heading 244° or as assigned by ATC, expect RADAR vectors to WHRLI. Thence. . . .

TAKEOFF RUNWAY 11: Climb on heading 123° to 1120, then direct, to cross LUUBE, at or above 2500, then on depicted route to WHRLI. Thence. . . .

TAKEOFF RUNWAYS 12L/R: Climb on heading 123° to 1120, then direct, to cross HEFNR at or above 2500, then on depicted route to WHRLI. Thence. . . .

TAKEOFF RUNWAY 29: Climb on heading 303° to 1120, then direct, to cross HAGEE at or above 2500, then on depicted route to WHRLI. Thence. . . .

TAKEOFF RUNWAYS 30L/R: Climb on heading 303° to 1120, then direct, to cross PYUNG at or above 2500, then on depicted route to WHRLI. Thence. . . .

. . . . (transition). Maintain 5000, expect filed altitude 10 minutes after departure.

MACON TRANSITION (WHRLI7.MCM)

NC-3, 11 JUN 2026 to 09 JUL 2026

NC-3, 11 JUN 2026 to 09 JUL 2026