

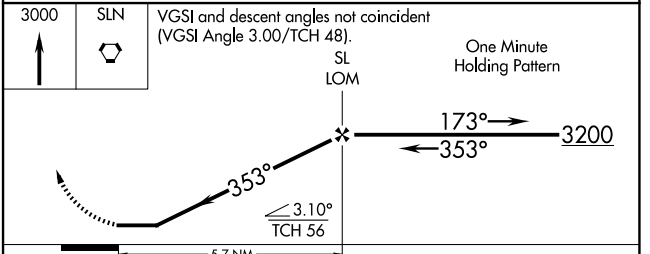
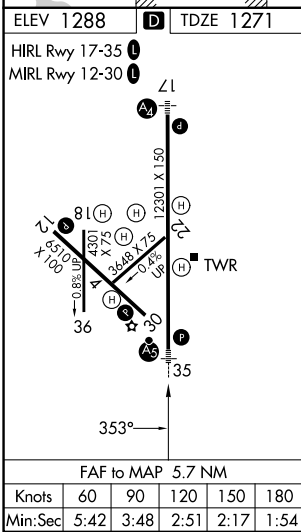
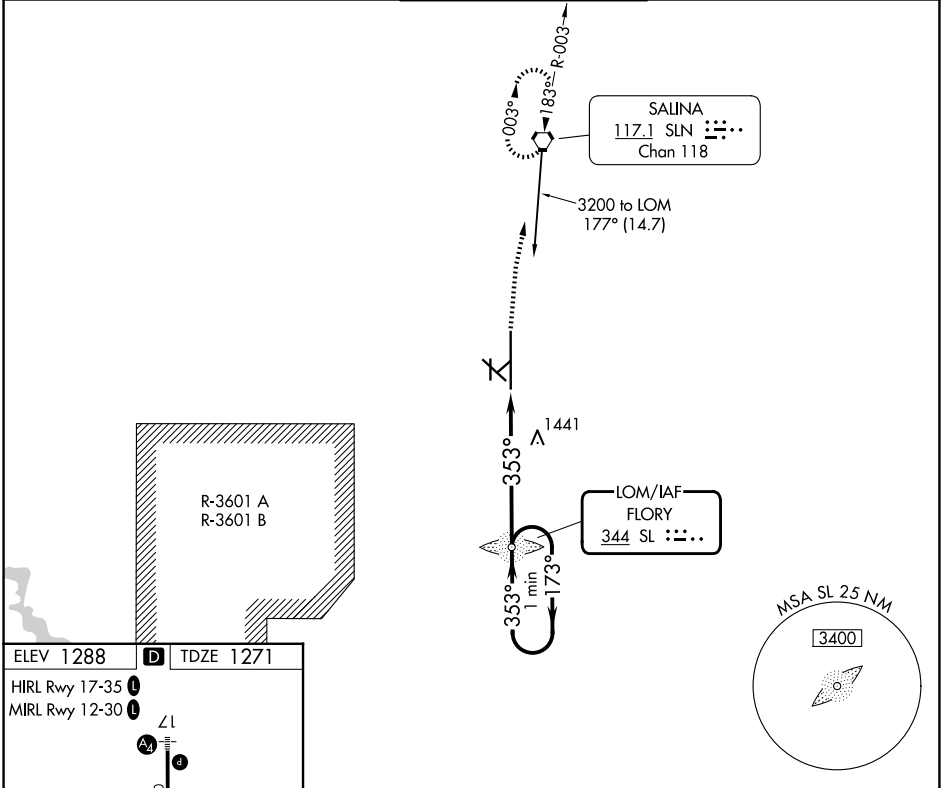
LOM SL 344	APP CRS 353°	Rwy Ldg TDZE 12300 1271	Apt Elev 1288
----------------------	------------------------	---	-------------------------

NDB RWY 35

SALINA RGNL (SLN)

<p>Cat D Circling NA southwest of runway 12-30. For inop ALS, increase S-35 Cats A/B visibility to 1 SM and Cats C/D to 1 3/8 SM.</p>	MALSR 	MISSED APPROACH: Climb to 3000 direct SLN VORTAC and hold.

ATIS 120.15	KANSAS CITY CENTER 134.9 363.2	SALINA TOWER ★ 119.3 (CTAF) 1257.7	GND CON 121.9 360.8	UNICOM 122.95
-----------------------	--	--	-------------------------------	-------------------------



NC-2, 11 JUN 2026 to 09 JUL 2026

NC-2, 11 JUN 2026 to 09 JUL 2026