


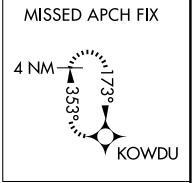
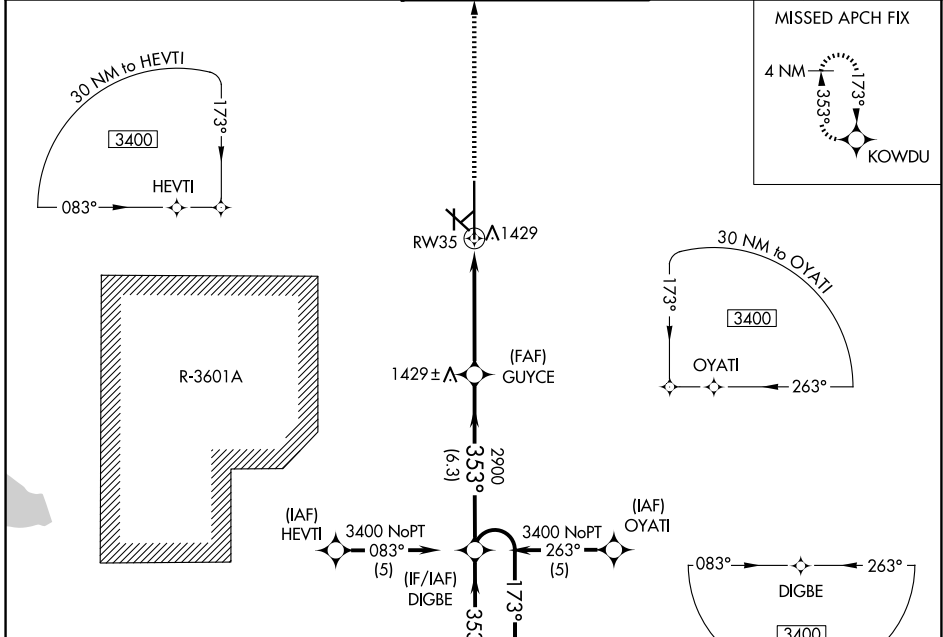
WAAS CH 77522 W35A	APP CRS 353°	Rwy Ldg 12300 TDZE 1271 Apt Elev 1288
--	------------------------	--

RNAV (GPS) RWY 35

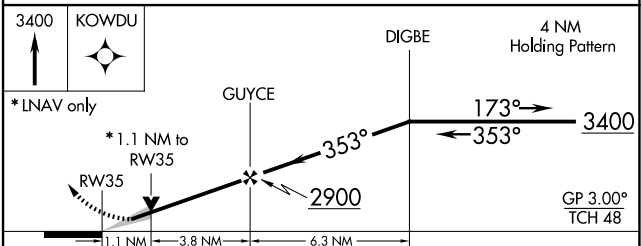
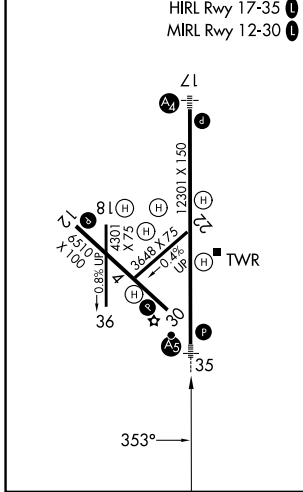
SALINA RGNL (SLN)

<p>▽ DME/DME RNP-0.3 NA. Baro-VNAV NA below -17°C (2°F). Circling NA for Cat D southwest of Rwy 12-30. For inoperative MALSR, increase LNAV Cat D visibility to 1¼ and LPV visibility all Cats to ¾.</p>	<p>MALSR </p>	<p>MISSED APPROACH: Climb to 3400 direct KOWDU and hold.</p>
---	--	--

ATIS 120.15	KANSAS CITY CENTER 134.9 363.2	SALINA TOWER * 119.3 (CTAF) 0 257.7	GND CON 121.9 360.8	UNICOM 122.95
-----------------------	--	---	-------------------------------	-------------------------



ELEV 1288	D TDZE 1271
-----------	--------------------



CATEGORY	A	B	C	D
LPV DA		1521-½	250 (300-½)	
LNAV/VNAV DA		1623-¾	352 (400-¾)	
LNAV MDA	1680-½	409 (400-½)	1680-¾ 409 (400-¾)	1680-1 409 (400-1)
CIRCLING	1820-1¼ 532 (600-1¼)	1840-1¼ 552 (600-1¼)	1860-1½ 572 (600-1½)	1860-2 572 (600-2)

NC-2, 11 JUN 2026 to 09 JUL 2026

NC-2, 11 JUN 2026 to 09 JUL 2026