


# LOC RWY 31

## SALINAS MUNI (SNS)

LOC I-SNS	APP CRS	Rwy Ldg	4825
108.5	315°	TDZE	82
		Apt Elev	84

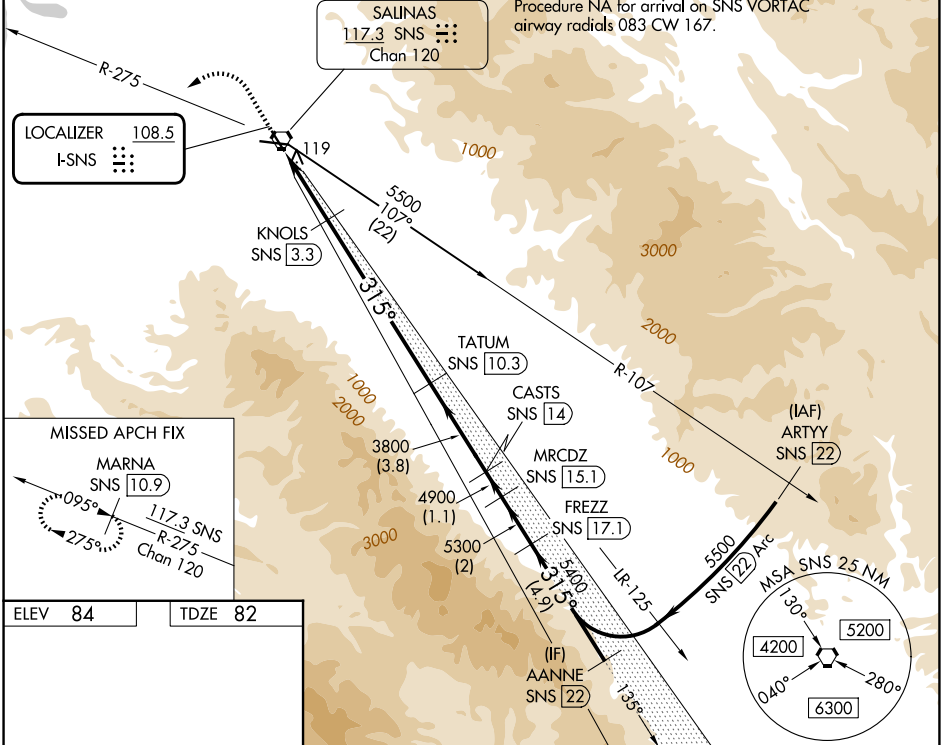
DME required.

**⚠** DME from SNS VORTAC. DME use requires simultaneous reception of I-SNS and SNS DME. Circling NA for Cats C and D northeast of Rwy 13 and north of Rwy 26. For inop ALS, increase S-LOC-31 visibility Cats C and D to RVR 5000.

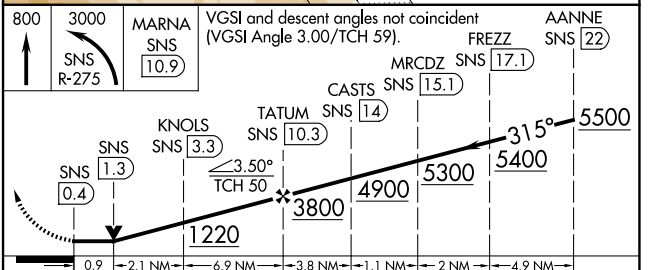
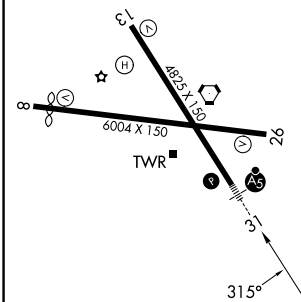
**MALSR**  


**MISSED APPROACH:** Climb to 800 then climbing left turn to 3000 on SNS VORTAC R-275 to MARNA/SNS 10.9 DME and hold, continue climb-in-hold to 3000.

ATIS	NORCAL APP CON	SALINAS TOWER *	GND CON	UNICOM
124.85	133.0 251.15	119.525 (CTAF) <b>0 239.3</b>	121.7	123.0



ELEV 84	TDZE 82
---------	---------



CATEGORY	A	B	C	D
S-LOC 31	420/24 338 (400-½)		420/40 338 (400-¾)	
CIRCLING	540-1 456 (500-1)		800-2 1740-3 716 (800-2)	1656 (1700-3)

HIRL Rwy 13-31 **Ⓛ**  
 MIRL Rwy 8-26 **Ⓛ**  
 REIL Rws 13 and 26 **Ⓛ**

SW-2, 11 JUN 2026 to 09 JUL 2026

SW-2, 11 JUN 2026 to 09 JUL 2026