

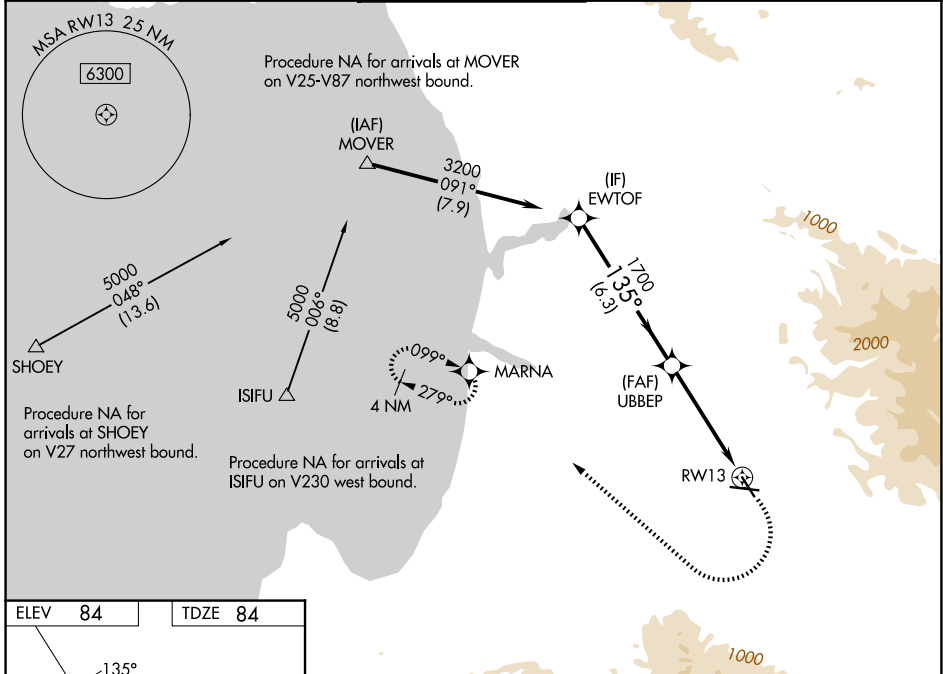
WAAS CH 57944 W13A	APP CRS 135°	Rwy Ldg 4825 TDZE 84 Apt Elev 84
--	------------------------	---

RNAV (GPS) RWY 13

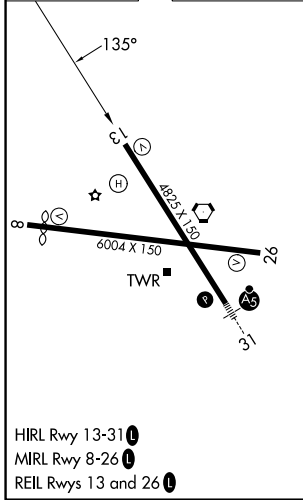
SALINAS MUNI (SNS)

RNP APCH - GPS.	MISSED APPROACH: (Do not exceed 185K until MARNNA). Climb to 600, then climbing right turn to 3000 direct MARNNA and hold, continue climb-in-hold to 3000.
<p>⚠ Rwy 13 helicopter visibility reduction below 3/4 SM NA. For uncompensated Baro-VNAV systems, LNAV/VNAV NA below 1°C or above 54°C. Circling NA for Cat C northeast of Rwy 13 and north of Rwy 26. Circling NA for Cat D northeast of Rwy 13-31.</p>	

ATIS 124.85	NORCAL APP CON 133.0 251.15	SALINAS TOWER * 119.525 (CTAF) 239.3	GND CON 121.7	UNICOM 123.0
-----------------------	---------------------------------------	--	-------------------------	------------------------



ELEV 84	TDZE 84
---------	---------



SALINAS, CALIFORNIA
Amdt 2 16MAY24

EWTOF	3200	1700	600	3000	MARNNA
	1700		1.4 NM to RWY 13		
GP 3.12°		TCH 50			
6.3 NM		3.3 NM		1.4 NM	
CATEGORY	A	B	C	D	
LPV DA	334-3/4 250 (300-3/4)				
LNAV/VNAV DA	447-1	363 (400-1)	463-1	488-1 1/8	404 (500-1 1/8)
LNAV MDA	580-1	496 (500-1)	580-1 3/8	496 (500-1 3/8)	
CIRCLING	580-1 496 (500-1)		800-2	1620-3	
			716 (800-2)	1536 (1600-3)	

36°40'N-121°36'W

RNAV (GPS) RWY 13

SW-2, 11 JUN 2026 to 09 JUL 2026

SW-2, 11 JUN 2026 to 09 JUL 2026