

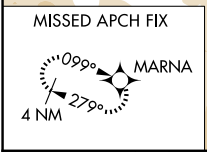
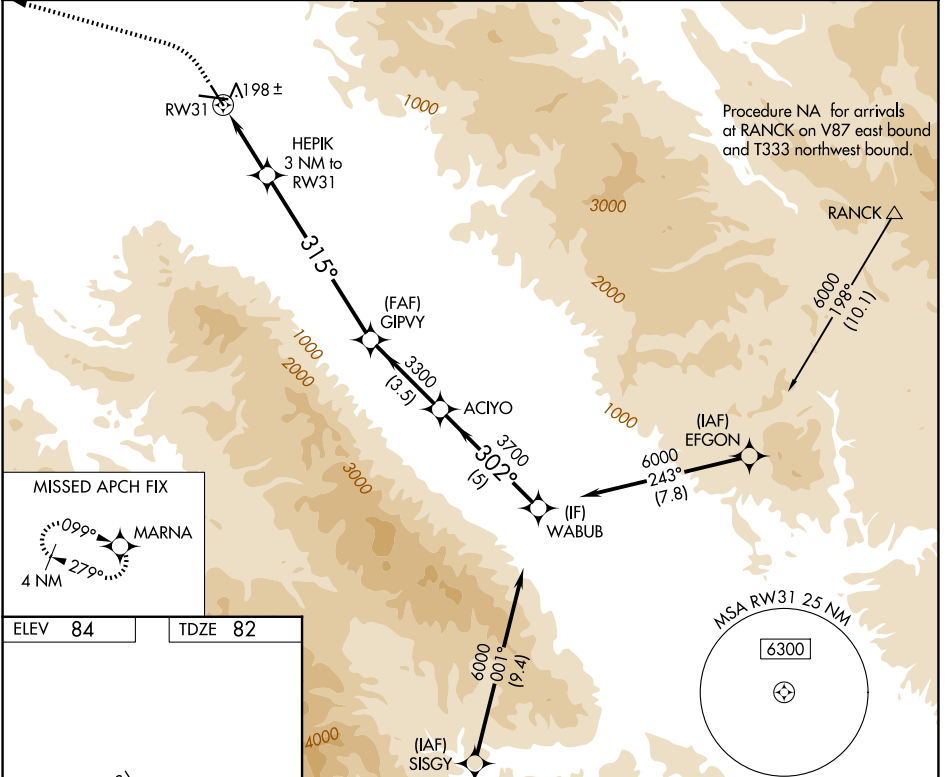
APP CRS	Rwy Ldg	4825
315°	TDZE	82
	Apt Elev	84

RNAV (GPS) Y RWY 31

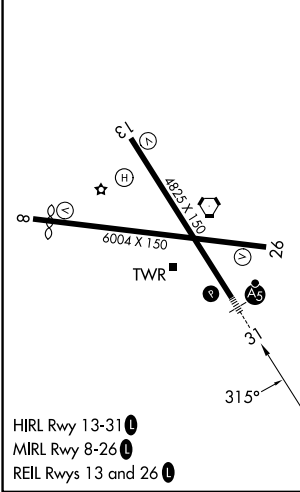
SALINAS MUNI (SNS)

RNP APCH - GPS.		MALSR	MISSED APPROACH: Climb to 600, then climbing left turn to 3000 direct MARNA and hold, continue climb-in-hold to 3000.
<p>⚠ Circling NA for Cat C northeast of Rwy 13 and north of Rwy 26. Circling NA for Cat D northeast of Rwy 13-31.</p>			

ATIS 124.85	NORCAL APP CON 133.0 251.15	SALINAS TOWER * 119.525 (CTAF) 0 239.3	GND CON 121.7	UNICOM 123.0
-----------------------	---------------------------------------	--	-------------------------	------------------------



ELEV 84	TDZE 82
---------	---------



600	3000	MARNA	VGSI and descent angles not coincident (VGSI Angle 3.00/TCH 59).	WABUB
↑	↷	⬠		
		HEPIK 3 NM to RWY 31	≤ 3.00° TCH 50	ACIYO
		1 NM to RWY 31		GIPVY
		RWY 31		3300
				302°
				6000
				3700
				315°
				1080
				1 NM
				2 NM
				7 NM
				3.5 NM
				5 NM
CATEGORY	A	B	C	D
LNAV MDA	460/24	378 (400-½)	460/35	378 (400-¾)
CIRCLING	540-1	456 (500-1)	800-2 716 (800-2)	1620-3 1536 (1600-3)

SW-2, 11 JUN 2026 to 09 JUL 2026

SW-2, 11 JUN 2026 to 09 JUL 2026