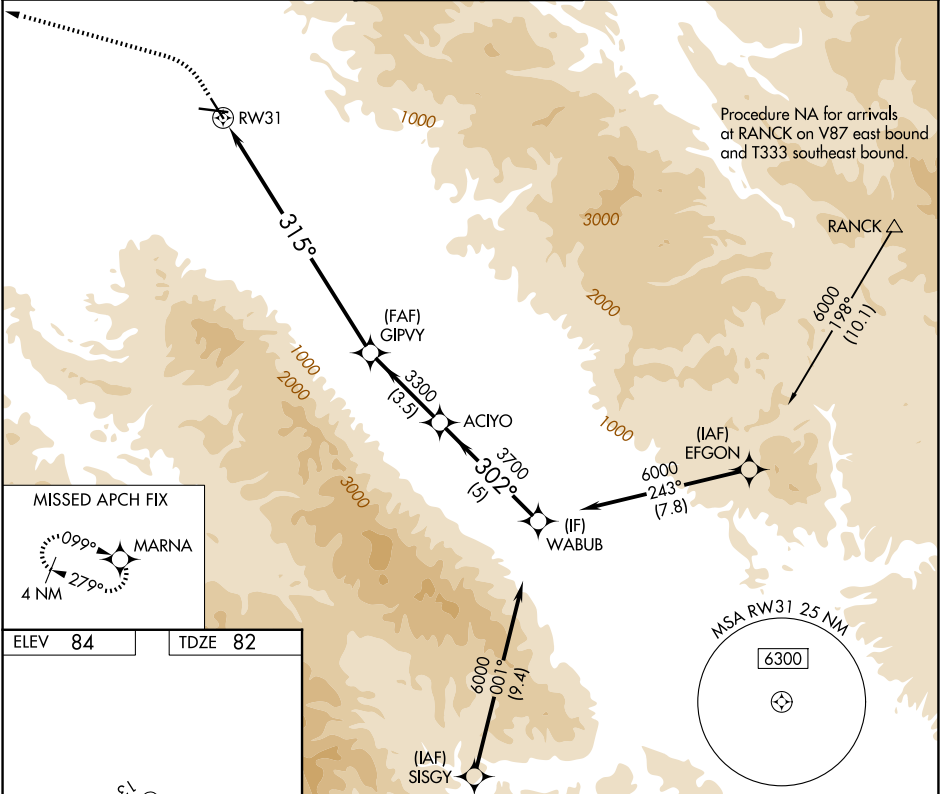


WAAS CH 69513 W31A	APP CRS 315°	Rwy Ldg TDZE Apt Elev	4825 82 84
--	------------------------	-----------------------------	---------------------------------------

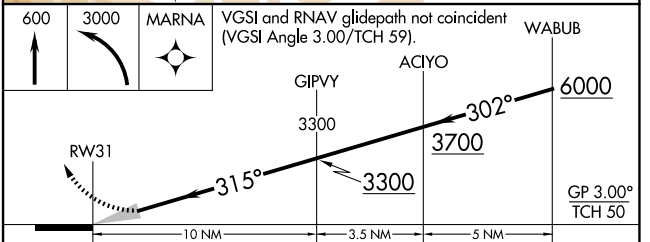
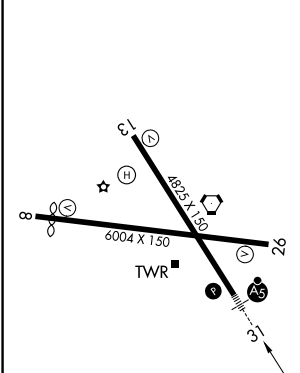
RNAV (GPS) Z RWY 31

SALINAS MUNI (SNS)

RNP APCH - GPS.		MALSR		MISSED APPROACH: Climb to 600, then climbing left turn to 3000 direct MARNA and hold, continue climb-in-hold to 3000.	
Baro-VNAV NA.					
ATIS 124.85	NORCAL APP CON 133.0 251.15	SALINAS TOWER * 119.525 (CTAF) 239.3		GND CON 121.7	UNICOM 123.0



ELEV 84	TDZE 82
---------	---------



CATEGORY	A	B	C	D
LPV DA		302/24	220 (300-1/2)	
LNAV/VNAV DA		465/35	383 (400-5/8)	

- HIRL Rwy 13-31
- MIRL Rwy 8-26
- REIL Rwy 13 and 26

SW-2, 11 JUN 2026 to 09 JUL 2026

SW-2, 11 JUN 2026 to 09 JUL 2026