

# DEZRT TWO DEPARTURE (RNAV)

AL-365 (FAA)

SALT LAKE CITY INTL (SLC)  
SALT LAKE CITY, UTAH

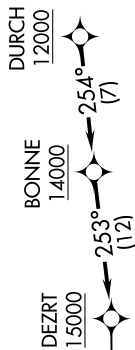
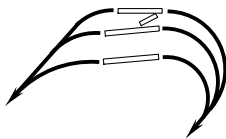
SW-4, 11 JUN 2026 to 09 JUL 2026

**TOP ALTITUDE:**  
15000

RNAV 1 - DME/DME/IRU or GPS.  
RADAR required.

D-ATIS 124.75 125.625  
 CINC DEL 127.3 379.975  
 CPDLC  
 GND CON 121.9 348.6 (Rwys 14-32, 17-35)  
 123.775 348.6 (Rwys 16L-34R, 16R-34L)  
 SALT LAKE CITY TOWER 119.05 257.8 (Rwy 16L-34R)  
 118.3 257.8 (Rwy 14-32, 17-35)  
 132.65 336.4 (Rwy 16R-34L)  
 SALT LAKE CITY DEP CON 135.5 316.15

NOTE: Turbojet aircraft only.



### TAKEOFF MINIMUMS

Rwys 14, 32: NA-ATC.

Rwy 16L: Standard with minimum climb of 470' per NM to 9900.

Rwy 16R: Standard with minimum climb of 500' per NM to 9700.

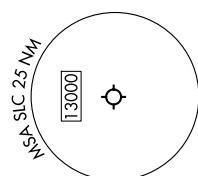
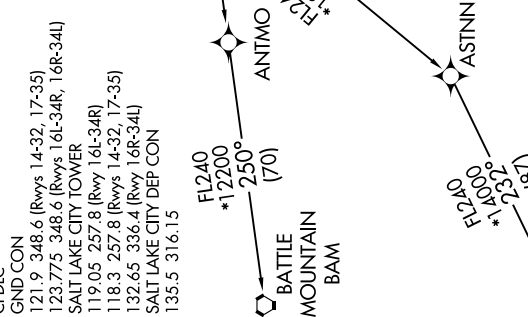
Rwy 17: Standard with minimum climb of 425' per NM to 9400.

Rwy 34L: Standard with minimum climb of 250' per NM to 7500.

Rwy 34R: Standard with minimum climb of 235' per NM to 7500.

Rwy 35: Standard with minimum climb of 220' per NM to 7500.

NOTE: Chart not to scale.



### DEPARTURE ROUTE DESCRIPTION

TAKEOFF RUNWAYS 16L/R, 17: Climbing right turn on a heading between 280° CW 340° from DER as assigned by ATC, thence . . . . .  
 TAKEOFF RUNWAYS 34L/R, 35: Climbing left turn on a heading between 260° CW 320° from DER as assigned by ATC, thence . . . . .

. . . . on RADAR vectors to cross DURCH at or above 12000, then on track 254° to cross BONNE at or above 14000, then on track 253° to cross DEZRT at or above 15000, then on (transition). Maintain 15000. Expect filed altitude 10 minutes after departure.

BATTLE MOUNTAIN TRANSITION (DEZRT2.BAM)

MINA TRANSITION (DEZRT2.MVA)

# DEZRT TWO DEPARTURE (RNAV)

(DEZRT2.DEZRT) 20APR23

SALT LAKE CITY, UTAH  
SALT LAKE CITY INTL (SLC)

SW-4, 11 JUN 2026 to 09 JUL 2026